



FLOWERPOT TABLE LAMP ^{VP4}

BY VERNER PANTON
1969

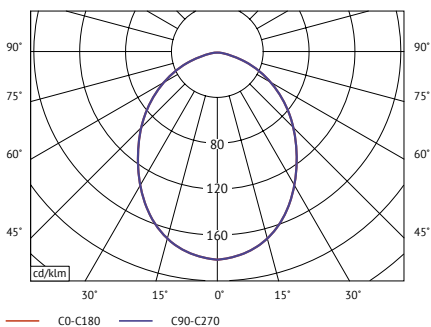
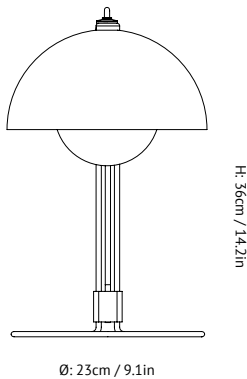


FLOWERPOT TABLE LAMP VP4

BY **VERNER PANTON**
1969

In 1968 the students' revolts in Paris, Rome and the United States were overthrowing stiff, old values, and initiating the Flower-Power generation of peace, love and harmony. Same year, Stanley Kubrick pictured the future of the year 2001, featuring the Verner Pantan Chair, and man was soon to set foot on the moon. In the world of design, a colourful, playful pendant hung in restaurants and exhibitions, and very soon, in everybody's homes. The FlowerPot with its two semi-circular spheres facing each other has long proved its lasting design quality and is just as much a synonym of our time, too.

& In his young days, Pantan often set off from Copenhagen in an odd looking converted Volkswagen for a trek across Europe, dropping in on fellow designers to share ideas - and good meals.



Photometric data file (LDT or IES) available upon request.

Product type	Table lamp.
Production Process	The two shades are made from deep drawn metal.
Environment	Indoor.
Dimensions (cm / in)	Ø: 23cm/9.1in, H: 35.9cm/14.1in.
Weight (kg)	1.23 kg.
Materials	Lacquered metal with 2 meter fabric cord.
Colours	Matt black. Matt white. Lacquered brass. Lacquered copper. Stainless steel.
Voltage (V)	220-240V - 50Hz.
Light source & Energi efficiency class	E27 Max 40 Watt. The luminaire is compatible with bulbs of the energy classes: A++ - E. Bulb is not included.
Certifications	CE, IP20, Class II.
Cord lenght / diameter (cm / in)	200cm/78.7in.
Cleaning Instructions	Clean with soft dry cloth. Always switch off the electricity supply before cleaning.
Package Dimensions (cm / in)	H: 38.5cm/15.2in x W: 23.0cm/9.1in x D: 23.5cm/9.3in.

PRODUCT



COLOR

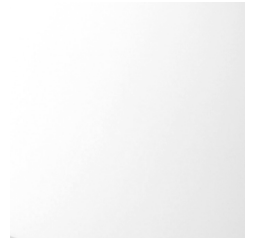


lacquered brass

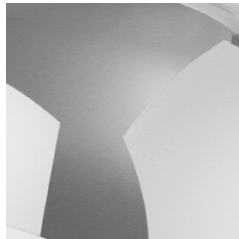
PRODUCT



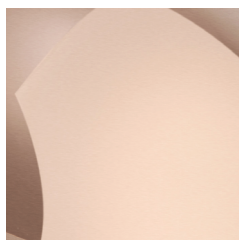
COLOR



Matt white



polished steel



lacquered copper



Matt black