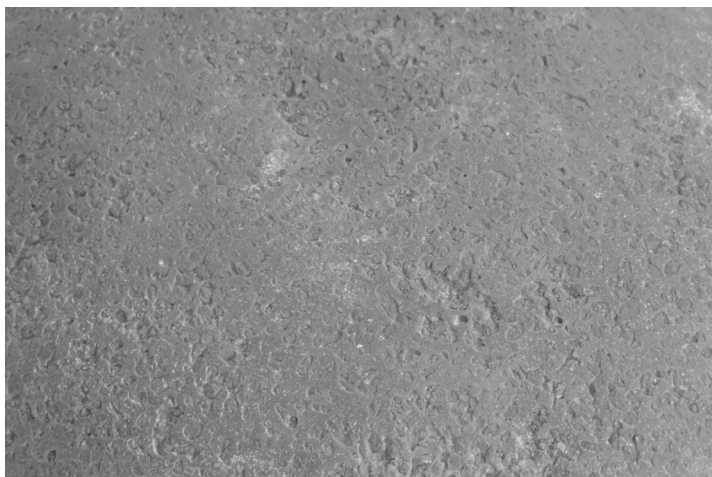
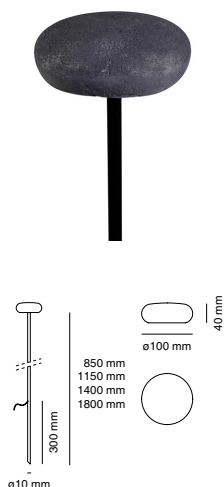


**OOLITE GRIT** by Maurizio Quargnale

Registered Design / Modello Registrato



Article code: **1112B-396-22192**

BOLLARD/PALETTO

Material / Materiale

**BETALY®**



handmade in Italy



IP65



C.V.  
[V]



Finishes & Colours / Finiture & Colori



393

GREEN



394

CORTEN



395

GREY



396

BLACK



397

SAND

**Light source / Sorgente luminosa**

Type/Tipo	LED
CCT	2200K
Light Source Flux/Flusso Sorgente	605lm
Power/Potenza	4,5W
CRI	CRI 80
Tube height / Altezza tubo	1800mm

**Installation / Installazione**

Type/Tipologia	BOLLARD/PALETTO
Weight/Peso	0,8Kg
Insulation class/Classe isolamento	III
IP	IP65

**Accessories & Variants / Accessori & Varianti**

All accessories and variants are available on 9010.it.  
Tutti gli accessori e le varianti sono disponibili su 9010.it.

**Power Supply / Alimentazione**

Tensione Costante/Costant Voltage	24Vdc
Dimmability/Dimmerazione	PWM (With dimmable driver/ Con driver dimmerabile)

See compatible drivers on 9010.it. Multiple modules require a parallel connection/Vedere driver compatibili su 9010.it. Collegamento moduli multipli in parallelo

The driver must be placed in a remote box. For suggested cable length and size refer to the driver specifications/Il driver deve essere riposto in remoto. Per la lunghezza e dimensione cavi consigliata fare riferimento alle specifiche del driver.

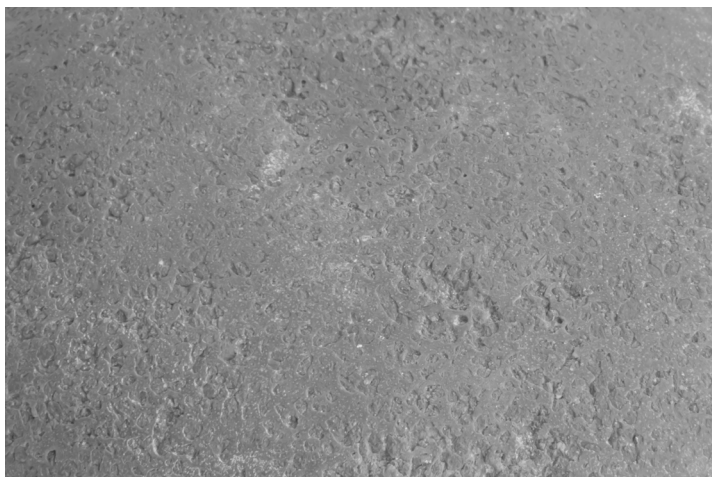
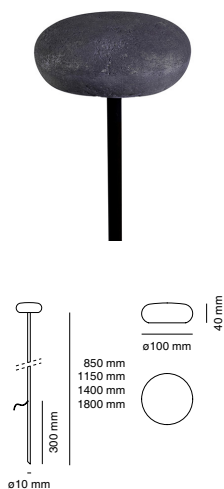
Check it on 9010.it



16/12/24

**OOLITE GRIT** by Maurizio Quargnale

Registered Design / Modello Registrato

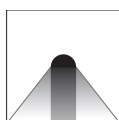


Article code: **1112B-396-27192**

BOLLARD/PALETTO

Material / Materiale

**BETALY®**



handmade in Italy



IP65



C.V.  
[V]



Finishes & Colours / Finiture & Colori



393

GREEN



394

CORTEN



395

GREY



396

BLACK



397

SAND

**Light source / Sorgente luminosa**

Type/Tipo	LED
CCT	2700K
Light Source Flux/Flusso Sorgente	635lm
Power/Potenza	4,5W
CRI	CRI 80
Tube height / Altezza tubo	1800mm

**Installation / Installazione**

Type/Tipologia	BOLLARD/PALETTO
Weight/Peso	0,8Kg
Insulation class/Classe isolamento	III
IP	IP65

**Accessories & Variants / Accessori & Varianti**

All accessories and variants are available on 9010.it.  
Tutti gli accessori e le varianti sono disponibili su 9010.it.

**Power Supply / Alimentazione**

Tensione Costante/Costant Voltage	24Vdc
Dimmability/Dimmerazione	PWM (With dimmable driver/ Con driver dimmerabile)

See compatible drivers on 9010.it. Multiple modules require a parallel connection/Vedere driver compatibili su 9010.it. Collegamento moduli multipli in parallelo

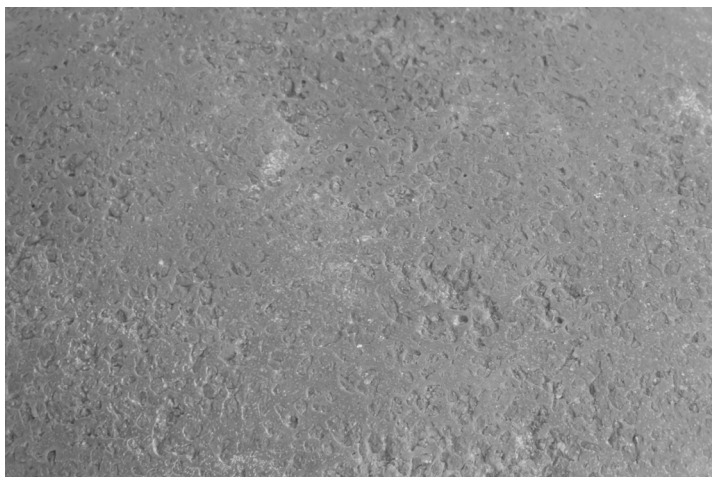
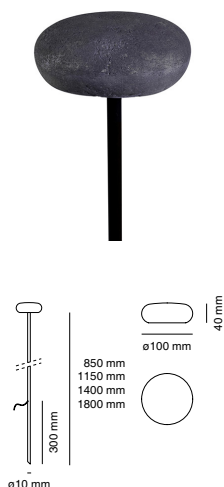
The driver must be placed in a remote box. For suggested cable length and size refer to the driver specifications/Il driver deve essere riposto in remoto. Per la lunghezza e dimensione cavi consigliata fare riferimento alle specifiche del driver.

Check it on 9010.it



**OOLITE GRIT** by Maurizio Quargnale

Registered Design / Modello Registrato



Article code: **1112B-396-30192**

BOLLARD/PALETTO

Material / Materiale

**BETALY®**



handmade in Italy



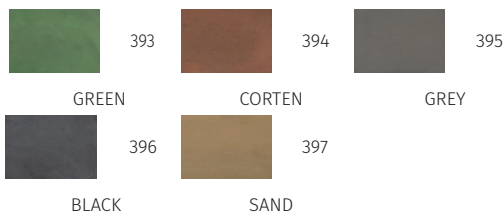
IP65



C.V.  
[V]



Finishes & Colours / Finiture & Colori



**Light source / Sorgente luminosa**

Type/Tipo	LED
CCT	3000K
Light Source Flux/Flusso Sorgente	670lm
Power/Potenza	4,5W
CRI	CRI 80
Tube height / Altezza tubo	1800mm

**Installation / Installazione**

Type/Tipologia	BOLLARD/PALETTO
Weight/Peso	0,8Kg
Insulation class/Classe isolamento	III
IP	IP65

**Accessories & Variants / Accessori & Varianti**

All accessories and variants are available on 9010.it.  
Tutti gli accessori e le varianti sono disponibili su 9010.it.

**Power Supply / Alimentazione**

Tensione Costante/Costant Voltage	24Vdc
Dimmability/Dimmerazione	PWM (With dimmable driver/ Con driver dimmerabile)

See compatible drivers on 9010.it. Multiple modules require a parallel connection/Vedere driver compatibili su 9010.it. Collegamento moduli multipli in parallelo

The driver must be placed in a remote box. For suggested cable length and size refer to the driver specifications/Il driver deve essere riposto in remoto. Per la lunghezza e dimensione cavi consigliata fare riferimento alle specifiche del driver.

Check it on 9010.it

