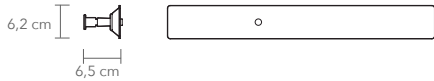
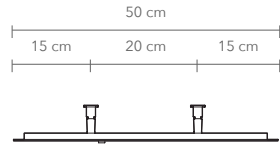


# ANOUR



DIVAR  
50 cm



**PRODUCT:** DIVAR, 50 cm

**LEAD TIME:** 8-10 weeks

**WEIGHT:** 3,7 kg (approximate value)

**PACKAGE WEIGHT:** 2,0 kg (approximate value)

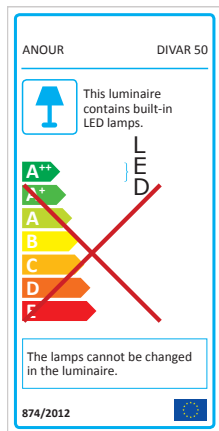
**CORD:** 2,4 m black cord + driver plug as standard

**DIMMER:** Touch dimmer on the lamp as standard  
Triac / Dali / Casambi / 1-10V / PUSH DIM available on request (without the button on the lamp)

**CERTIFICATION:** CE (230V)

**MATERIAL:** Steel, Stainless steel, Corten steel, Brass, Copper, Marble

For more technical information, please see the installation manual.



## TECHNICAL DETAILS:

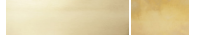
240V / 120V (available with Switchex)  
Illumination  
LED  
Wattage: 10 W  
Light output: 600 lm  
Color temperature: 2700 K, 3000 K, 4000 K  
CRI: 93+  
LED life hours: 50,000  
IP20



SCAN FOR  
INSTALLATION  
INSTRUCTIONS

## AVAILABLE MATERIALS AND FINISHES:

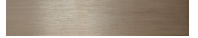
Brass polished



Brass brushed



Brass browned



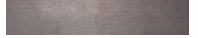
Copper polished



Copper brushed



Copper browned



Stainless steel brushed



Stainless steel polished



Stainless steel black



Steel rusted



Steel dark opal chrome

