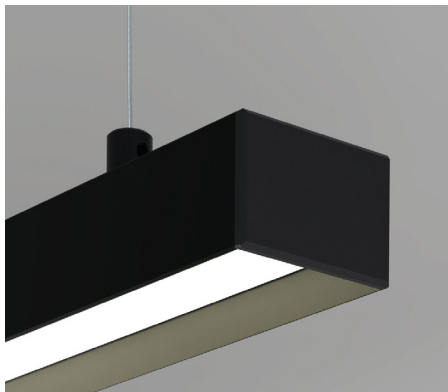


LUMALINE

SUSPENSION PROFILE PENDANT
SELF-ASSEMBLY KIT

DLD
ARCHITECTURAL



DETAILS

IP Rating	IP20
Material	Aluminium extrusion
Rated Voltage	24V
Fixation	Suspended

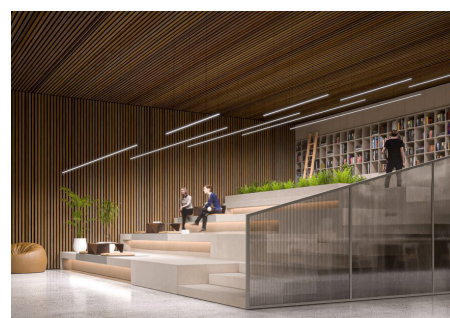
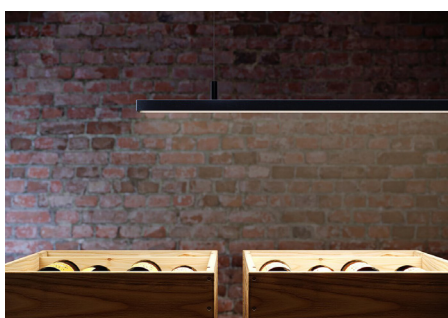
KEY POINTS

- Self-assembly profile pendant
- All components included
- Assembly and installation should be carried out by a qualified electrical professional

WHAT'S INCLUDED WITH THE KIT?

Everything you need to assemble and install DLD LumaLine is included:

- 1 x Profile | 2m length | black or white
- 1 x Diffuser | frosted
- 2 x End caps | matching finish
- 2 x Suspension cable kit | 5m
- 2 x Ceiling fixing set | matching finish
- 1 x LED tape | Lightflow CSP 10W | 5m reel | 2700K or 3000K
- 1 x Driver | Phase dim or DALI



LUMALINE

SUSPENSION PROFILE PENDANT
SELF-ASSEMBLY KIT

DLD
ARCHITECTURAL

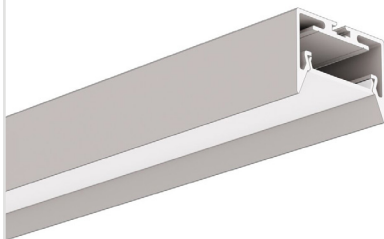
LUMALINE PROFILE

Black

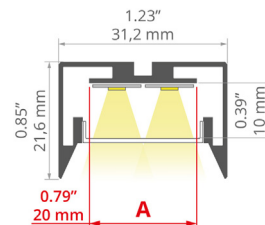


- Smooth profile walls
- Bevelled edges
- Main and decorative lighting
- Mount using electricity conductive accessories

White



Material: aluminium
Possible fixture IP: IP20
Profile cross-section: rectangular
Width: 31.2mm
Height: 21.6mm



LED glueing width (A): 20mm
Number of LED tape (A) max. 8mm wide: 2
Max power of LED tape: 24W/m
Width of glow: 22mm

END CAPS

Black

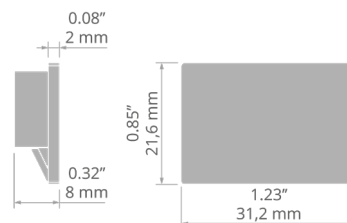


- Aesthetic finish
- Push fit into profile
- Set of 2

White



Material: ABS
Shape: Rectangular
Height: 21.6mm
Width: 31.2mm



Corrosion resistance: yes
Corrosion resistance at high salinity: yes

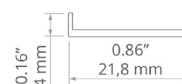
DIFFUSER

Frosted



- Excellent light dispersion
- Snap fit into profile
- 1 included

Material: PC
Shape: Flat
Width: 21.8mm
Light transmission: 70%



LUMALINE

SUSPENSION PROFILE PENDANT SELF-ASSEMBLY KIT

DLD
ARCHITECTURAL

CEILING MOUNTING KIT

Black

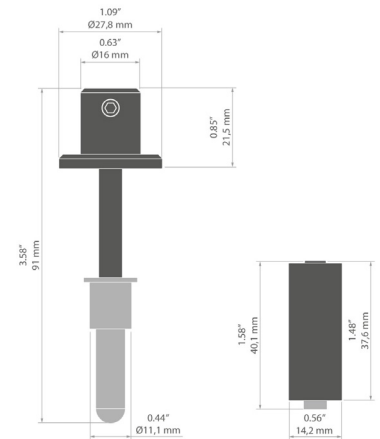


- Mount to the ceiling, using the included accessory kit
- Mount to the lighting fixture, using a small lock
- Screw mounted to the wire
- Set of 2

White



- | | |
|-------------------------|----------------------------|
| IP protection rating: | IP20 |
| Corrosion resistance: | yes |
| Conducting electricity: | yes |
| Material: | Stainless steel, aluminium |



- | | |
|----------------------|------|
| Working temperature: | 54°C |
| Lifting capacity: | 20kg |
| Maximum current: | 10A |
| Voltage drop: | 0.1V |

SUSPENSION CABLE KIT



- Locked in fastener with pressure screw
- End secured with a clamp sleeve

- | | |
|-------------------------|---------------|
| Material: | Steel, copper |
| Colour: | Silver |
| Conducting electricity: | Yes |
| Length: | 5m max. |
| Diameter: | 0.95mm |



- | | |
|----------------------|-------|
| Working temperature: | 60°C |
| Lifting capacity: | 21kg |
| Maximum current: | 6A |
| Loss of voltage: | 0.55V |

LUMALINE

SUSPENSION PROFILE PENDANT
SELF-ASSEMBLY KIT

DLD
ARCHITECTURAL

DLD LIGHTFLOW CSP LED TAPE



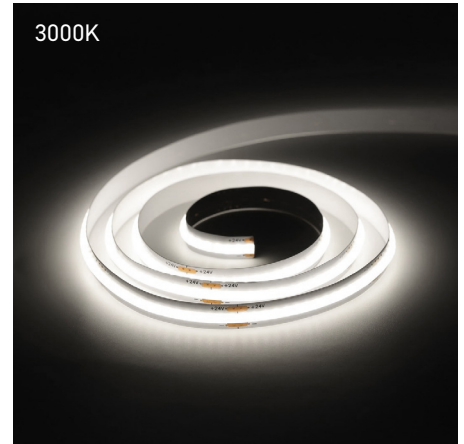
- Uses Chip Scale Package technology
- Slim 8mm width
- Supplied in a 5m roll
- 3M self adhesive on the back
- Can be cut every 50mm along the cut mark
- Dimmable by 0-10V, PWM, TRIAC and DALI

2700K



IP protection rating: IP20
High CRI: 90
R9: >40
Fixing: 3M adhesive tape
CCT: 2700K or 3000K

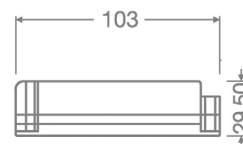
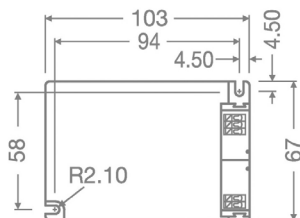
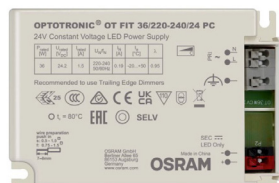
3000K



Voltage:	24V DC
Power (±10%):	10W/m
Lumens per Watt:	97lm/W
Lumens per 0.5m:	485lm
PCB width:	8mm
Cut size:	50mm
Maximum length (10% voltage drop):	5m

DRIVER | PHASE DIM | OSRAM OT FIT 36W 24V CONSTANT VOLTAGE

OT FIT 36 /220-240/24 PC



FEATURES:

- 24 V constant output voltage
- SELV
- Wide Ta range -20 – +50
- Lifetime 50 000 h at tc max
- Dimming range: 3...100 % luminous flux
- Recommended to Use Trailing Edge dimmer

ELECTRICAL DATA:

Nominal input voltage: 220...240 V
Mains frequency: 50/60 Hz
Input voltage AC: 198...264 V
Total harmonic distortion: < 15 %
Power factor: > 0.95
Efficiency in full-load: 85 % (1)
Device power loss: 6.0 W (2)
Inrush current: < 25 A (3)
Max. ECG no. on circuit breaker 10 A (B): 21
Max. ECG no. on circuit breaker 16 A (B): 33

Surge capability (L/N-Ground): 2 kV
Surge capability (L-N): 1 kV
Nominal output voltage: 24.2 V
Output ripple current (100 Hz): < 5 %
Nominal output power: 2.42...36.3 W
Maximum output power: 36.3 W (4)
Galvanic isolation: SELV

- 1) at 230 V, 50 Hz
- 2) At Full load, 230 V, 50 Hz
- 3) twidth = 250 μ s (measured at 50 % Ipeak)
- 4) at steady state

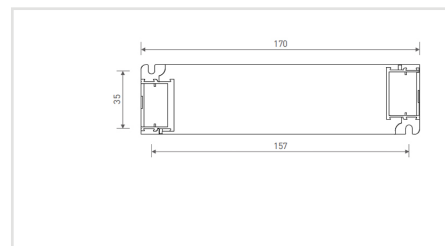
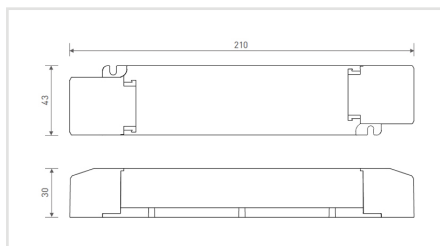
LUMALINE

SUSPENSION PROFILE PENDANT
SELF-ASSEMBLY KIT

DLD
ARCHITECTURAL

DRIVER | DALI DIM | L-TECH 36W 24VDC CONSTANT VOLTAGE

LM-36-24-G1D2



FEATURES:

- 24 V constant output voltage
- Dimming interfaces DALI-2, Push DIM
- Dismountable end cap, adjustable length
- Small size and light weight
- Flicker free 0~100% dimming, down to 0.1%
- Up to 50000-hour life time
- 5 year warranty

OUTPUT DATA:

Output Voltage:	24Vdc
Output Voltage Range:	24Vdc \pm 0.5Vdc
Output Current:	Max. 1.5A
Output Power:	Max. 36W
Output Power Range:	0~36W
Strobe Level:	High frequency
PWM Frequency:	3600Hz
Dimming Range:	0~100%, down to 0.1%
Overload Power Limitation:	\geq 102%
Ripple & Noise:	Switch ripple \leq 200mV, noise \leq 500mV

INPUT DATA:

Dimming Interface:	DALI-2, Push DIM
Input Voltage:	200-240Vac / 200-280Vdc
Frequency:	50/60Hz
Input Current:	Max. 0.26A / 230Vac
Power Factor:	PF>0.95 / 230Vac, at full load
THD:	<8% at 230Vac, at full load
Efficiency (typ.):	88%
Standby Power Loss:	<0.5W
Inrush Current (typ.):	Cold start 25A at 230Vac
Control Surge Capability:	-N:2KV
Leakage Current:	Max. 0.5mA

** Driver specification can be changed without notification*



01189 889414



sales@darklightdesign.com



darklightdesign.com

Darklight Design
Unit 10 Brookside Business Centre
Church Road
Swallowfield
Reading
Berkshire
RG7 1TH