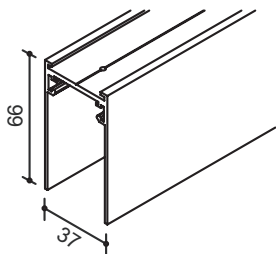


## SHADOWLINE

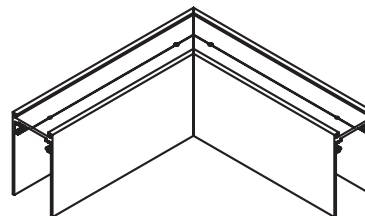
### LED LINEAR SURFACE MOUNTED TRACK SYSTEM INSTALLATION INSTRUCTIONS

**DLD**  
**ARCHITECTURAL**

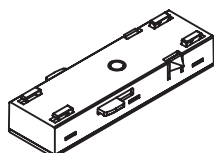
#### SURFACE MOUNTED TRACK - COMPONENTS



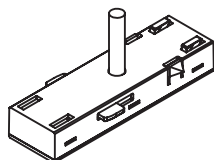
Product code	Length
10-TDS	1500mm
20-TDS	2000mm
30-TDS	2500mm



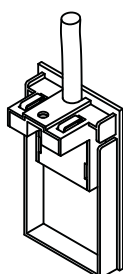
Product code	Length
50-TDS	Surface mounted Horizontal corner 89 x 89mm D.37mm



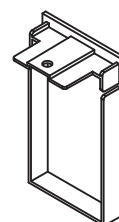
10-CDS  
Recessed Straight circuit joint



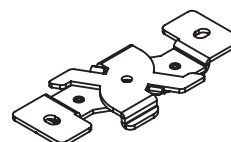
20-CDS  
Recessed straight circuit joint 2m power cable



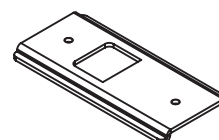
30-CDS  
End cap 2m power cable



40-CDS  
End cap



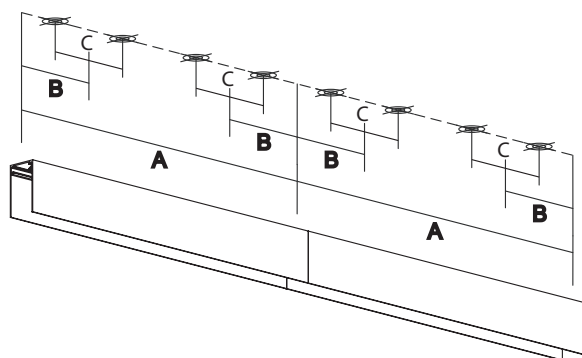
30-IDS  
2 x Steel surface mounted clips



60-CDS  
Surface mounted reinforced plate

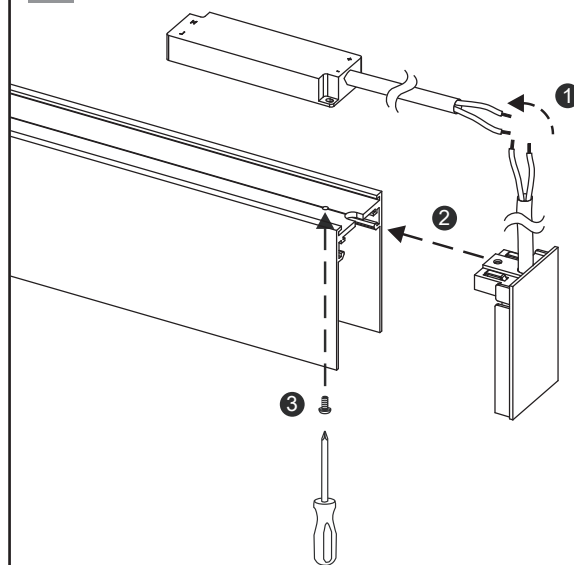
## SURFACE MOUNTED TRACK - INSTALL INSTRUCTIONS

1



Product code	A	B	C
10-TDS	1500mm	B>80mm	70mm
20-TDS	2000mm	B>80mm	70mm
30-TDS	2500mm	B>80mm	70mm

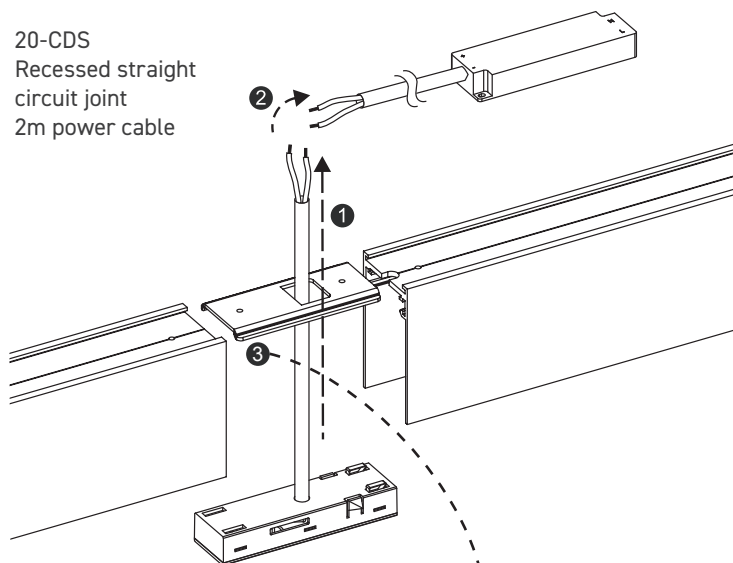
2



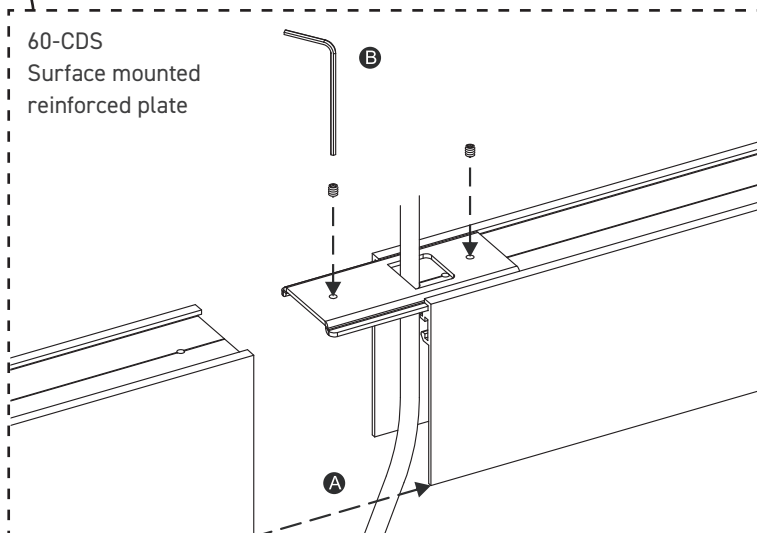
30-CDS End cap 2m power cable

3

20-CDS  
Recessed straight  
circuit joint  
2m power cable

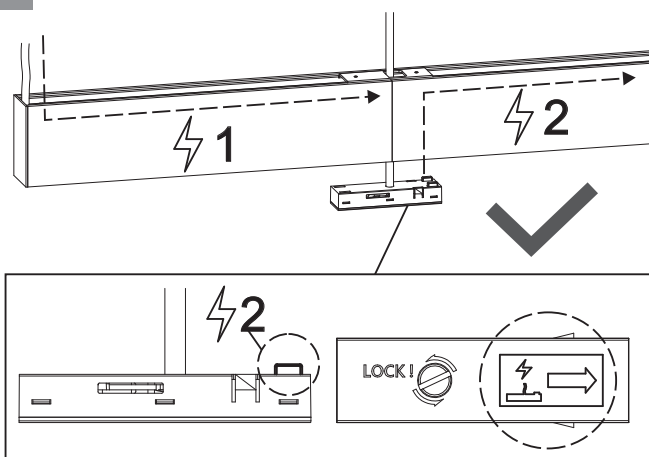


60-CDS  
Surface mounted  
reinforced plate

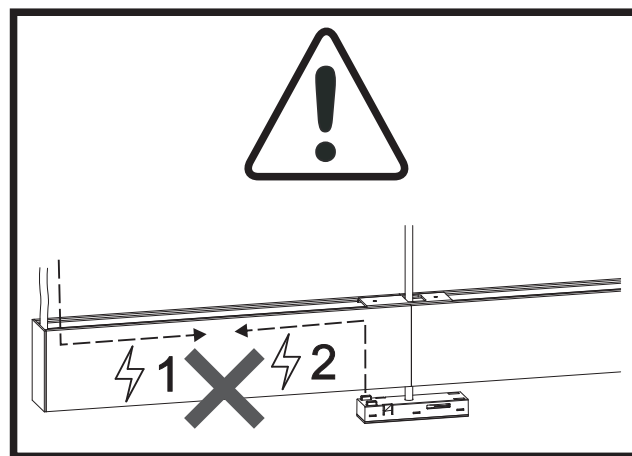


## SURFACE MOUNTED TRACK - INSTALL INSTRUCTIONS

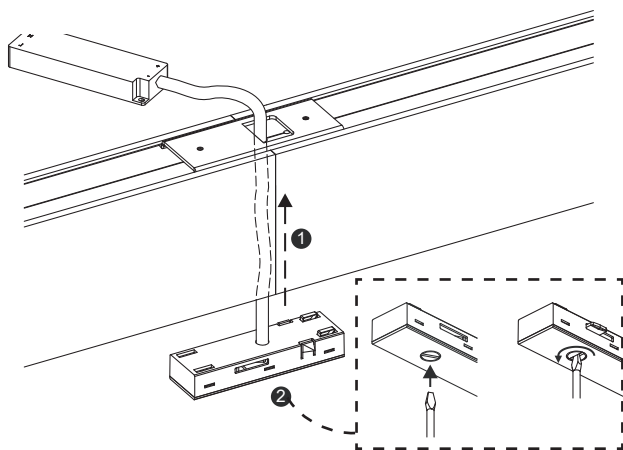
4



20-CDS Recessed straight circuit joint 2m power cable

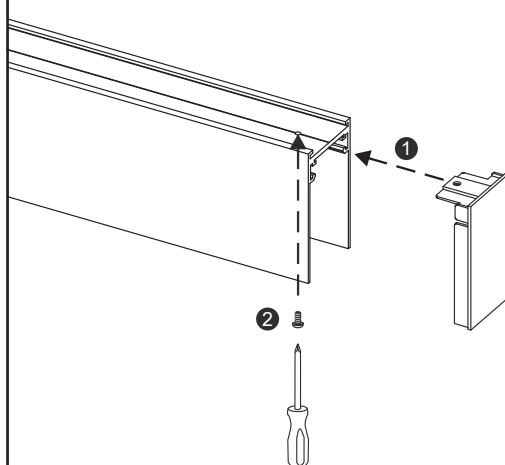


5



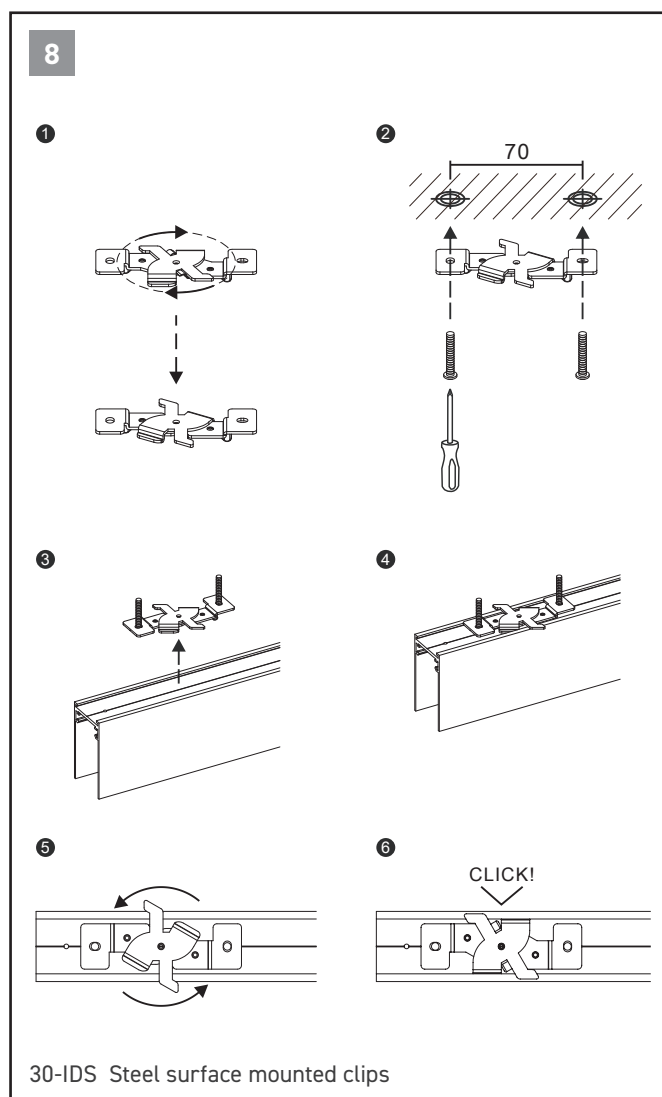
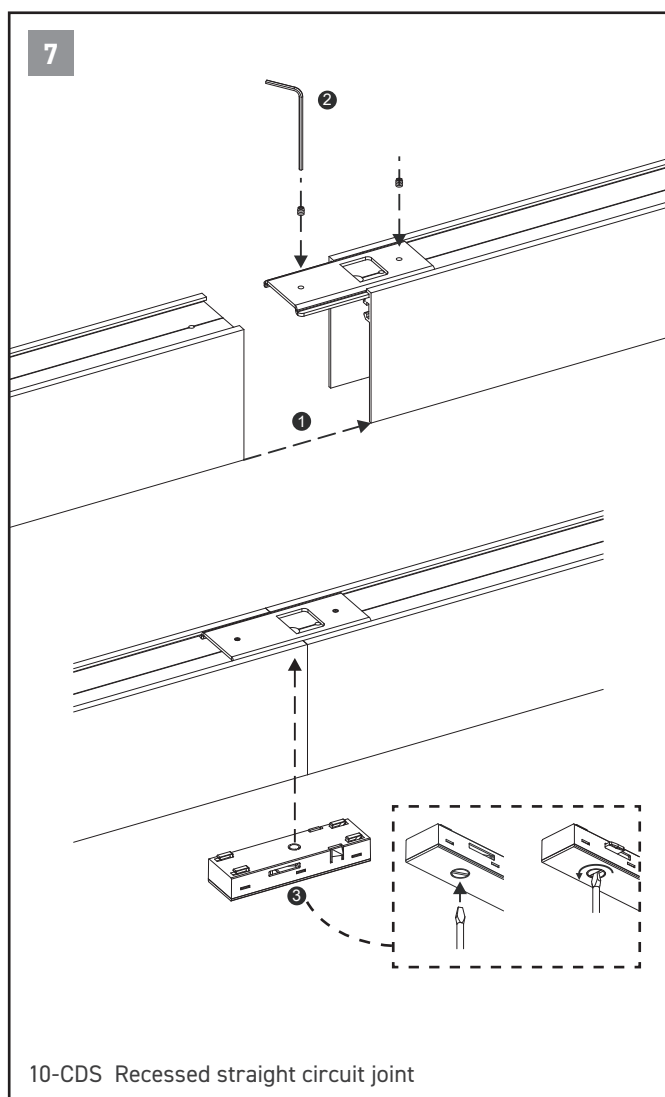
20-CDS  
Recessed straight circuit joint 2m power cable

6



40-CDS End cap

## SURFACE MOUNTED TRACK - INSTALL INSTRUCTIONS



01189 889414



[sales@darklightdesign.com](mailto:sales@darklightdesign.com)



[darklightdesign.com](http://darklightdesign.com)

Darklight Design  
Unit 10 Brookside Business Centre  
Church Road  
Swallowfield  
Reading  
Berkshire  
RG7 1TH