

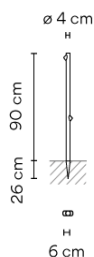
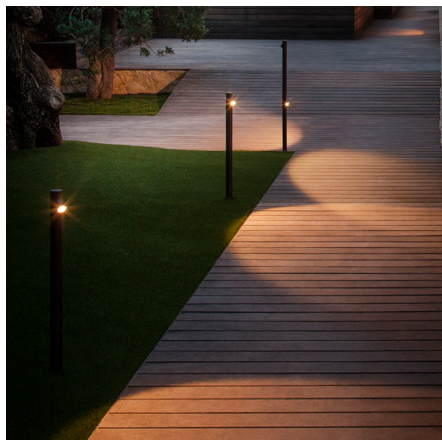
Bamboo

4801

Design By Antoni Arola & Enric Rodríguez

Bamboo is an outdoor beacon with three finishes that make it possible to camouflage and integrate it into the landscape, with the added surprise that it produces light. Available in khaki, stainless steel and off-white. Designed by Antoni Arola & Enric Rodríguez.

Model Sheet



Finish

- 07 Khaki
RAL 7006
- 58 Off-white
Pantone Warm

LED

2700 K / 3500 K

Control

On/Off

Electrical connection Surface

Light source

2 x LED 2,1W 700mA



LED

CRI>90 399 lm 95
2700 K / 3500 K

Driver

Constant Current 700 mA 100~240 V
50~60 Hz



LED IP66 Bi-volt 50-60Hz

Application

Outdoor

Packaging

1 Box
1.6 m x 0.125 m x 0.125 m
Gross weight 4.7 kg
Net weight 4.23 kg
Vol. 0.025 m3

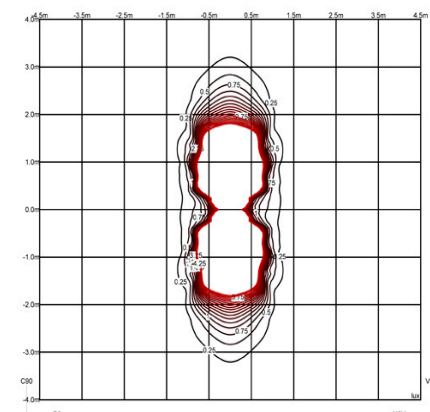
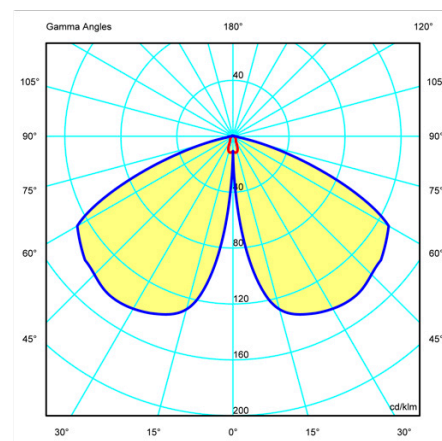
Lighting effect

Accent Spotlight

Narrow: Angles less than 20°. Suitable for generating high contrasts or projections at far distances.



Photometric Data



Efficiency

25.25%

Coordinate System

CG

Total Flux

352.44 lm

Maximum Value

143.12 cd/klm

Min. quantity, upcharge and extra lead time apply

All of our products come with a five-year warranty. Check our legal terms at www.vibia.com/warranty

Vibia Lighting, S.L.U.

Office / Oficina
Progrés 4-6, 08850 Gavà, Barcelona, Spain.

International T +34 934 796 971
Spain / Portugal T +34 934 796 970

customer.service@vibia.com
vibia.com