

° on line

The power of this light source lies in its slenderness and unobtrusiveness; the simplicity of the fixtures' design makes that it can be used anywhere. An innovative and state-of-the-art magnet and contact system makes that a wide variety of led-fixtures can be easily inserted or moved.

The led-fixtures are similar in style yet each one of them has its own character and lighting quality.

Eden Design was the first to introduce this magnet system on the market. First presentation was in **2010** on the designfair Interieur Kortrijk, Belgium.

This collection won several awards, such as:

- The Best of the Best Red Dot Award (2011)
- Design Plus powered by Light & Building (2012)
- Henri van de Velde Label (2010)

Design by Bart Lens



reddot design award
best of the best 2011



DESIGN PLUS
powered by: light+building









°online / Grey Office, Greece - architects eDje - photograph by Vangelis Paterakis



°online / Grey Office, Greece- architects eDje - photograph by Vangelis Paterakis



°o-disk / general lighting

°u-disk / powerful spot



°knick & °out, monopoint / B-house - architect Pitsou Kedem (Ran Broide) - photography by Amit Geron



°knick & °knick monopoint / GR-apartment - architect Pitsou Kedem (Tan Broides) - photography by Amit Geron





*in / Loft à Versailles - architect Agence Demont Reynaud / PPil - photography by Mr Gregoire Eloy



*knick & °turn / Bijouterie Monsieur Paris, France by Julien Fajardo – SUGAR
photography by Javier Callejas Sevilla - Lighting design by Dominique Liners (Etoiles)



*knick / Harbour Green, Hong Kong - architect Millimeter Interior Design Limited



*turn / apartment, Israel - architect Pitsuo Kedem - ST-OR - lighting design Orly Avron - photograph by Amit Geron



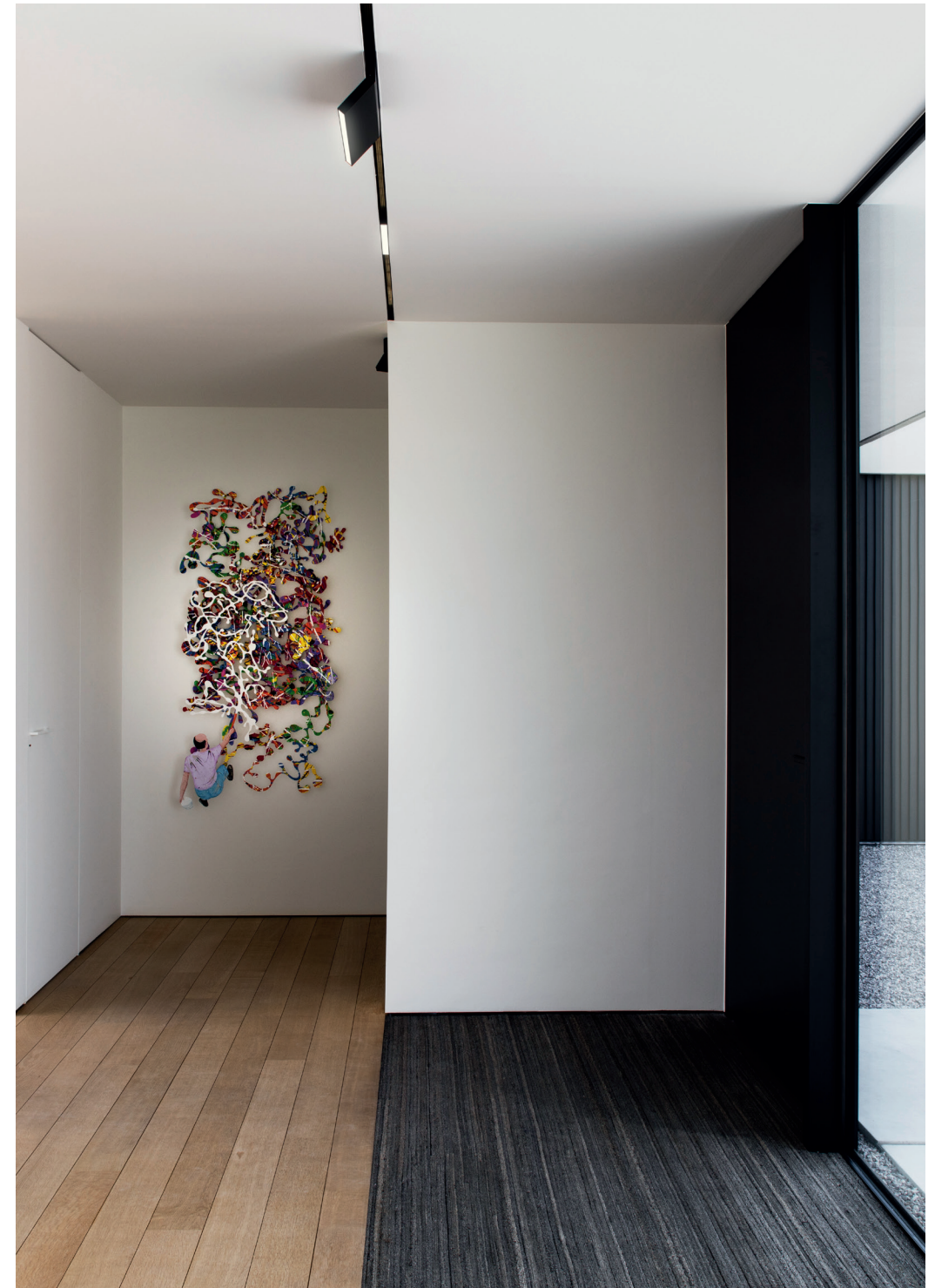
°out & °knick / Apartment, Tbilisi, design by Yodezeen



°knick / T House, TLV, Israel - design by Orly Dekter



°online / Villa V, Belgium - architect Francisca Hautekeete - photograph by Annick Vernimmen



°online / Villa V, Belgium - architect Francisca Hautekeete - photograph by Annick Vernimmen

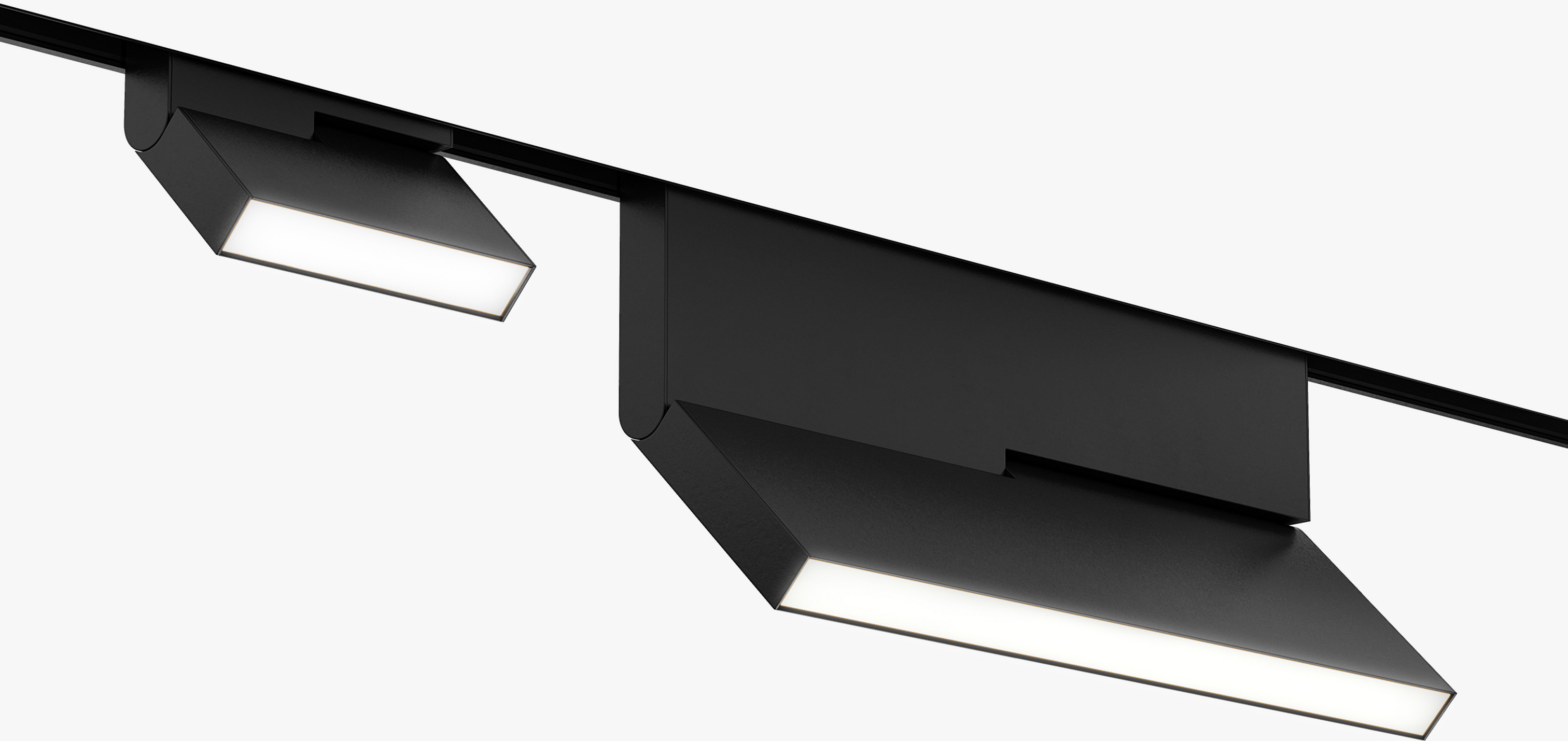




°knick / Apartment, Paris - architect Angelo View Drive



°turn / Villa, Belgium - architect Pascal François - photograph by Thomas De Bruyne (cafeine.be)





°knick / Penthouse, Ukraine - architect NOTT Design Studio (Sergey Gotvyansky, Mikhail Temnikov)



°out monopoint with plasterkit / Beach house Knokke - architect Glenn Reynaert - photograph by Hendrik Biegs



°in monopoint with plasterkit



°knick monopoint with plasterkit







° knick



°dot monpoint with plasterkit



°dot monopoint with plasterkit / Grey Perfection, Moscow - architect Dina Mezheva - photograph by Bogdan Vitkov



°turn monopoint with plasterkit & °knick / Grey Perfection, Moscow - architect Dina Mezheva - photograph by Bogdan Vitkov



°turn / galerie Kamel Mennour, Paris - architect Pierre Yovanovitch - lighting design Dominique Liners (ETOILES)
photograph by Jean-François Jaussaud - Luxproductions



°turn / galerie Kamel Mennour, Paris - architect Pierre Yovanovitch - lighting design Dominique Liners (ETOILES)
photograph by Jean-François Jaussaud - Luxproductions



*knick / Industrial loft, Russia - architect Denis Krasikov, Cartelle Design



*in / Regency NY - architect Workshop APD - custom building contractor Dutchman Contracting, Inc.





°out / Church Genk, Belgium - architect PCP Architects - photograph by Philippe van Gelooven



°online suspended track / Design Museum Gent, Belgium - photograph by Beeldpunt



°in & °turn / Gert Robijns - Reset Home, centre for contemporary art



°knick / Men's Choice II, Slovakia - architects AT26 - photograph by Jakub Dvorak



°knick / Grosvenor House Coconut Grove, Miami - RS3 Design - Luxe Cable + Light



°online surface mounted / House, Belgium - architect Project B



°out / office, Australia



*knick & out / Osko Village, St. Petersburg - architect Tolko Interiors



*knick & °in / Beach house, Tripoli, Lebanon - design by Minkara Sahar - The Light Avenue by Debbas