

STORM



*...create with magnet
and turn desires
to reality!!*

STORM



STORM is a 24V DC low voltage aluminium profile for tracking lights with smart magnet technology. It is an ideal solution for small showcases, homes, rest areas, museums, hotels, exhibition halls and generally for many decorative and architectural projects.

Technical Features

- Aluminium body, painted electrostatically in selected colour.
- With low voltage 24V DC track.
- Connection for operation on 230V-50/60Hz.

Tracking Lights

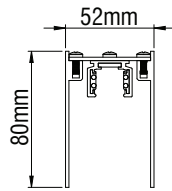
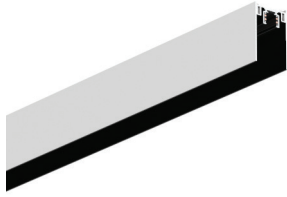
- With low voltage 24V DC magnet adapter for mounting on LV track max. 15A.
- Pure light without IR/UV radiation.
- Efficient thermal management.
- Operation life: 50,000 hours with efficiency > 80% of the initial luminous flux (L80B10).

Upon Request

- Available also in 2700 Kelvin CRI 90.

STORM

STORM SURFACE PROFILE



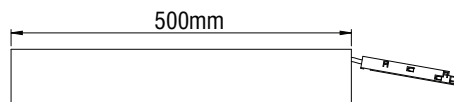
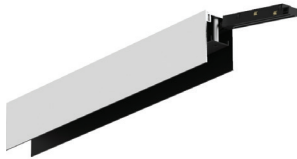
- Aluminium profile painted electrostatically in selected colour.
- With low voltage 24V DC track.
- Inner part in black colour.

Code	Description	L
99711	Storm Surface Profile	0,5m
99712	Storm Surface Profile	1m
99713	Storm Surface Profile	2m
99714	Storm Surface Profile	3m

BE CAREFUL

The standard product delivered connected to circuit 1 (V+ / V-).
If the circuit 2 (D+ / D-) is needed, has to be defined.

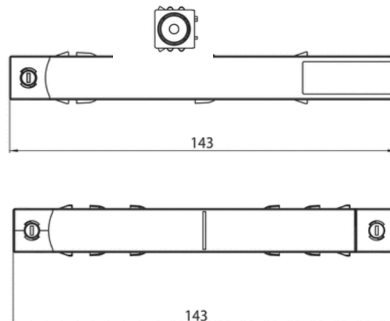
STORM SURFACE GEAR TRAY



- Aluminium profile painted electrostatically in selected colour.
- With low voltage 24V DC driver.
- Inner part in black colour.

Code	Description	L
99741	Storm Surface Gear Tray 60W	0,5m
99742	Storm Surface Gear Tray 100W	0,5m
99744	Storm Surface Gear Tray 60W Dali	0,5m

END FEED - MIDDLE CONNECTOR



Code	Description	Colour
803611	Low Voltage End Feed	White
803613	Low Voltage End Feed	Black
803621	Low Voltage Middle Connector	White
803623	Low Voltage Middle Connector	Black

STORM SURFACE END CUP



- End Cup made from aluminium in selected colour.

Code	Description
99700	Storm Surface End Cup

STORM SURFACE CONNECTOR

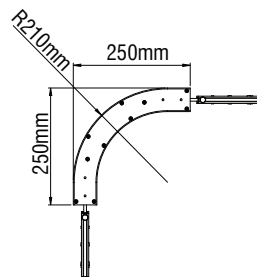


- Storm surface connector made of aluminium.

Code	Description
997011	Storm Surface Connector

STORM

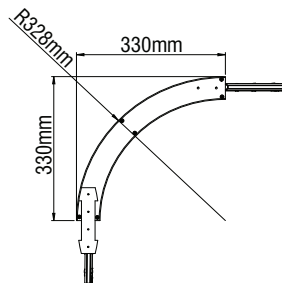
STORM SURFACE ANGLE BEND



- Aluminium profile painted electrostatically in selected colour.
- Inner part in black colour.

Code	Description
99718	Storm Surface Angle Bend

STORM SURFACE ANGLE BEND 2

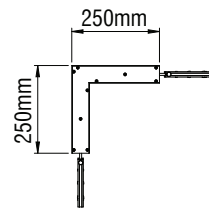


- Aluminium profile painted electrostatically in selected colour.
- Inner part in black colour.

Code	Description
99719	Storm Surface Angle Bend 2*

* To create lighting angle in combination with STRIPE ANGLE BEND STR

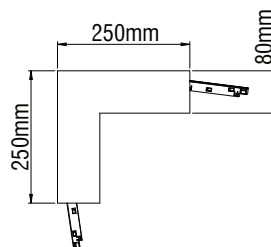
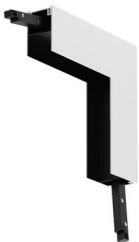
STORM SURFACE ANGLE



- Aluminium profile painted electrostatically in selected colour.
- Inner part in black colour.

Code	Description
99717	Storm Surface Angle

STORM SURFACE ANGLE WALL



- Aluminium profile painted electrostatically in selected colour.
- Inner part in black colour.

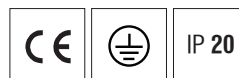
Code	Description
99716	Storm Surface Angle Wall

STORM SURFACE SUSPENSION



Code	Description	L
997021	Storm Surface Suspension	0,5m
997022	Storm Surface Suspension	1m
997023	Storm Surface Suspension	2m
997024	Storm Surface Suspension	3m

POWER SUPPLY

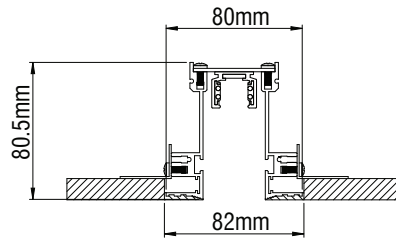


- Body from aluminium profile.
- With transparent cable 3x0,75mm² or 5x0,50mm².
- Square or round version.

Code	Description	Kg
90042	Power Supply 3x0,75mm ² L 2m Ø80	0,130
90043	Power Supply 3x0,75mm ² L 2m Ø70	0,130
90044	Power Supply 3x0,75mm ² L 2m 80x80	0,210
90045	Power Supply 3x0,75mm ² L 2m 70x70	0,200
90048	Power Supply 5x0,50mm ² L 2m Ø100	0,250
90049	Power Supply 5x0,50mm ² L 2m 100x100	0,300

STORM

STORM TRIMLESS PROFILE



- Aluminium profile.
- With low voltage 24V DC track.
- Inner part in black colour.

Code	Description	L
997213	Storm Trimless Profile	0,5m
997223	Storm Trimless Profile	1m
997233	Storm Trimless Profile	2m
997243	Storm Trimless Profile	3m

BE CAREFUL

The standard product delivered connected to circuit 1 (V+/V-).
If the circuit 2 (D+/D-) is needed, has to be defined.

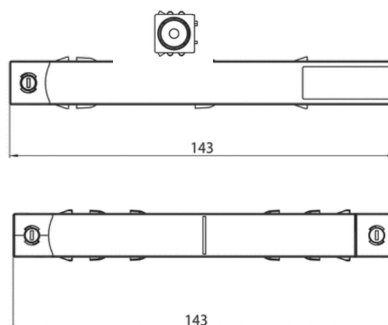
STORM TRIMLESS GEAR TRAY



- Aluminium profile.
- With low voltage 24V DC driver.
- Inner part in black colour.

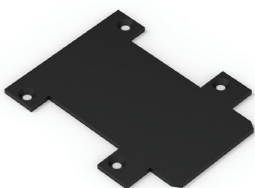
Code	Description	L
997513	Storm Trimless Gear Tray 60W	0,5m
997523	Storm Trimless Gear Tray 100W	0,5m
997543	Storm Trimless Gear Tray 60W Dali	0,5m

END FEED - MIDDLE CONNECTOR



Code	Description	Colour
803611	Low Voltage End Feed	White
803613	Low Voltage End Feed	Black
803621	Low Voltage Middle Connector	White
803623	Low Voltage Middle Connector	Black

STORM TRIMLESS END CUP



- End Cup made from aluminium.

Code	Description
997053	Storm Trimless End Cup

STORM

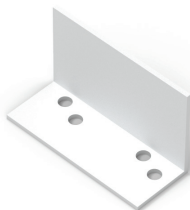
STORM TRIMLESS TRUNKING CONNECTOR



- Aluminium Trunking Connectors.

Code	Description
968255	Trunking Metal Connectors pair

STORM TRIMLESS SUSPENSION BRACKET



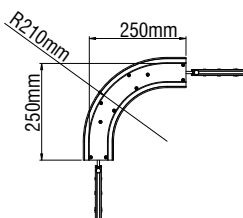
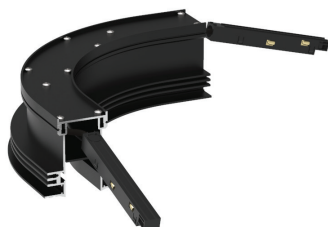
- Suspension bracket made from aluminium.

Required:

Two pieces per 0,5m trimless profile.

Code	Description
997061	Suspension bracket

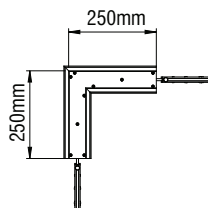
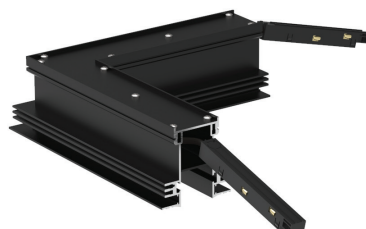
STORM TRIMLESS ANGLE BEND



- Aluminium profile.
- Inner part in black colour.

Code	Description
997283	Storm Trimless Angle Bend

STORM TRIMLESS ANGLE

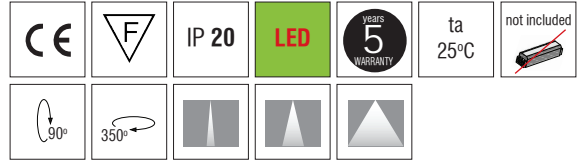
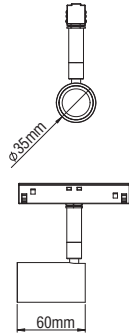


- Aluminium profile.
- Inner part in black colour.

Code	Description
997273	Storm Trimless Angle

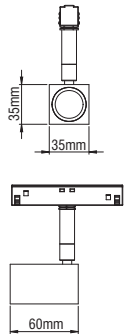
STORM

DION STR



- Aluminium body.
- Lens in Spot, Medium & Wide version.
- With low voltage 24V DC magnet adapter.
- CRI: min. 90 / SDCM: 3
- Luminous efficacy:
6W: 4000 K: 88 Lm/Watt
6W: 3000 K: 83 Lm/Watt

DION Q STR

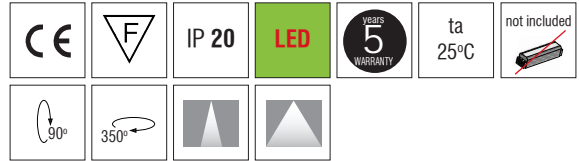
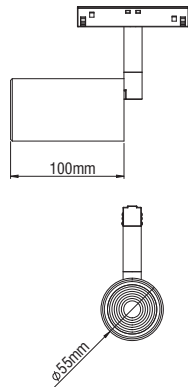


Code	Description	Kg
99761	Dion STR Track 24V DC 6W	0,150
99762	Dion Q STR Track 24V DC 6W	0,200

BE CAREFUL

The standard product delivered connected to circuit 1 (V+/ V-).
If the circuit 2 (D+/ D-) is needed, has to be defined.

DION 2 STR



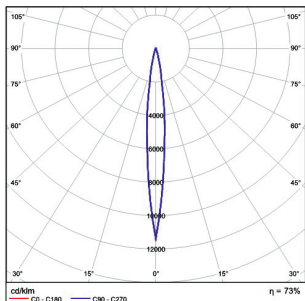
- Aluminium body.
- Lens in Medium or Wide version.
- With low voltage 24V DC magnet adapter.
- CRI: min. 90 / SDCM: 3
- Luminous efficacy:
9W: 4000 K: 80 Lm/Watt
9W: 3000 K: 78 Lm/Watt

Code	Description	Kg
99763	Dion 2 STR Track 24V DC 9W	0,250

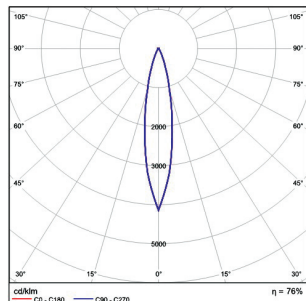
BE CAREFUL

The standard product delivered connected to circuit 1 (V+/ V-).
If the circuit 2 (D+/ D-) is needed, has to be defined.

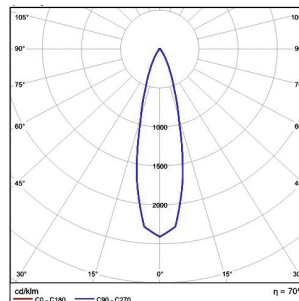
DION STR/DION Q STR/TRIDION: SPOT



DION STR/DION Q STR/TRIDION: MEDIUM

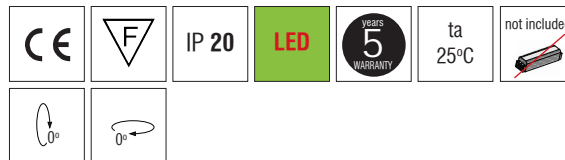
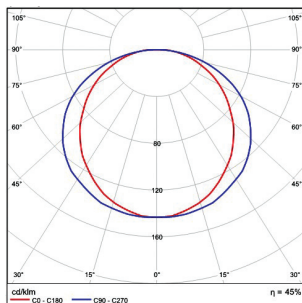
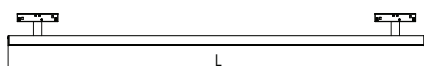
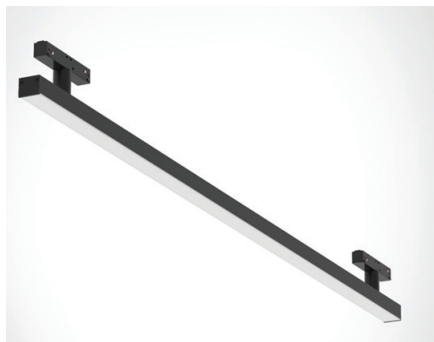


DION STR/DION Q STR/TRIDION : WIDE



STORM

STRIPE STR



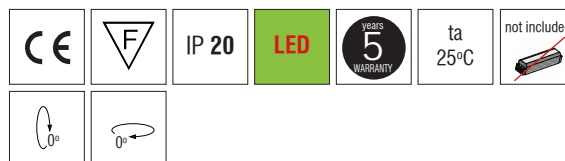
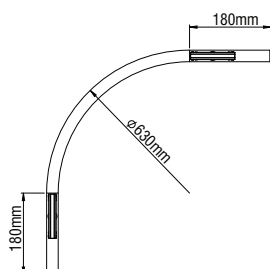
- Aluminium body.
- With low voltage 24V DC magnet adapter.
- CRI: min. 80 / SDCM: 3
- Luminous efficacy:
4000 K: 100 Lm/Watt
3000 K: 95 Lm/Watt

Code	Description	L(mm)	Kg
99764-01	Stripe STR Track 24V DC 3W	300	0,300
99764-02	Stripe STR Track 24V DC 5W	500	0,400
99764-03	Stripe STR Track 24V DC 10W	1000	0,800

BE CAREFUL

The standard product delivered connected to circuit 1(V+/V-).
If the circuit 2 (D+/D-) is needed, has to be defined.

STRIPE ANGLE BEND STR



- Aluminium body.
- With low voltage 24V DC magnet adapter.
- CRI: min. 80 / SDCM: 3
- Luminous efficacy:
4000 K: 100 Lm/Watt
3000 K: 95 Lm/Watt

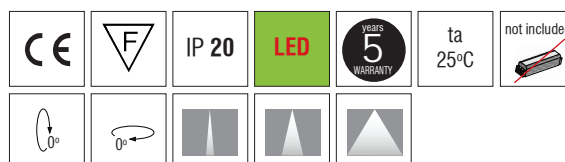
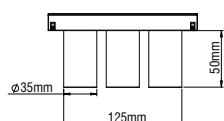
Code	Description
99765-01	Stripe Angle Bend STR Track 24V DC 5W*

* Combined only with STORM Surface ANGLE BEND 2.

BE CAREFUL

The standard product delivered connected to circuit 1(V+/V-).
If the circuit 2 (D+/D-) is needed, has to be defined.

TRIDION



- Aluminium body.
- Lens in Spot, Medium & Wide version.
- With low voltage 24V DC magnet adapter.
- CRI: min. 90 / SDCM: 3
- Luminous efficacy:
3x6W: 4000 K: 88 Lm/Watt
3x6W: 3000 K: 83 Lm/Watt

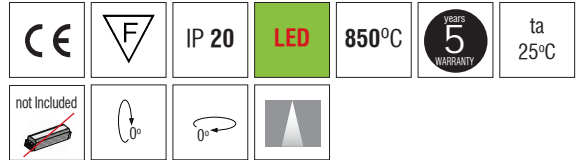
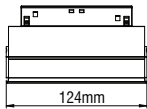
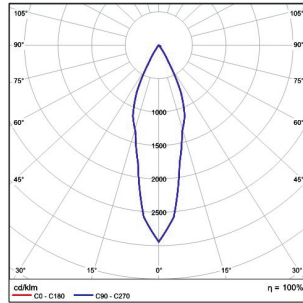
Code	Description	Kg
89116-01	Tridion Track 24V DC 3x6W	0,350

BE CAREFUL

The standard product delivered connected to circuit 1(V+/V-).
If the circuit 2 (D+/D-) is needed, has to be defined.

STORM

MICRON STR



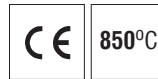
- Aluminium body, painted electrostatically in black colour.
- With low voltage 24V DC magnet adapter.
- Reflector beam: Medium.
- Plastic cover not included. Please order separately.
- 5x2W power consumption.
- CRI: min. 90 / SDCM: 3
- Luminous Efficacy: 5x2W: 4000 K: 88 Lm/Watt
5x2W: 3000 K: 83 Lm/Watt

Code	Description	Kg
99767	3 Micron STR 5x2W Led	0,480

BE CAREFUL

The standard product delivered connected to circuit 1 (V+/ V-).
If the circuit 2 (D+/ D-) is needed, has to be defined.

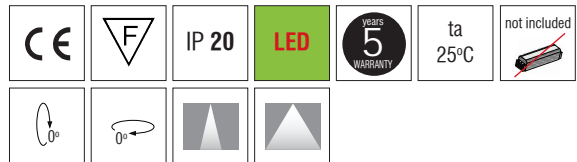
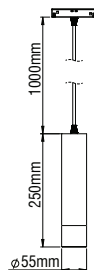
MICRON - COVER



- Plastic cover for 5x.. Micron.

Code	Description
806910	Micron Cover 5x.. black
806911	Micron Cover 5x.. gold
806912	Micron Cover 5x.. silver

DION 2 - PENDANT



- Aluminium body.
- Lens in Medium or Wide version.
- With low voltage 24V DC magnet adapter.
- CRI: min. 90 / SDCM: 3
- Luminous efficacy: 9W: 4000 K: 80 Lm/Watt
9W: 3000 K: 78 Lm/Watt

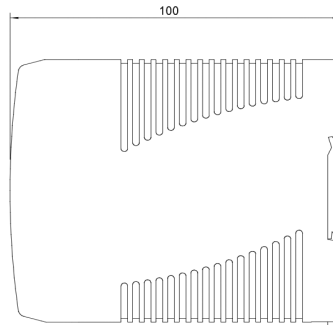
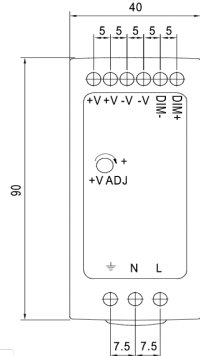
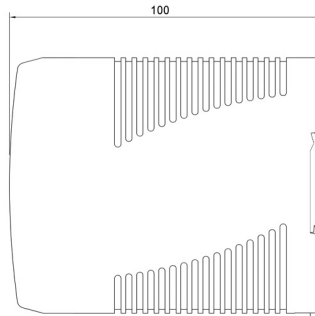
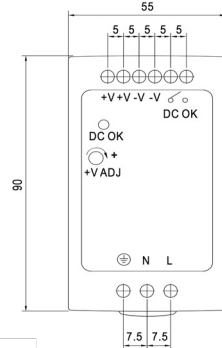
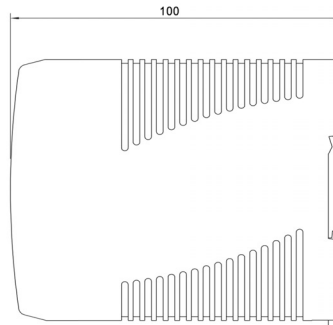
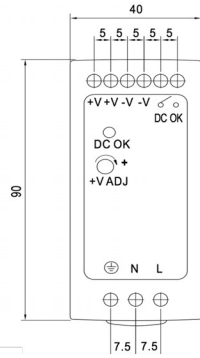
Code	Description	Kg
89117	Dion 2 Pendant Track 24V DC 9W	0,300

BE CAREFUL

The standard product delivered connected to circuit 1 (V+/ V-).
If the circuit 2 (D+/ D-) is needed, has to be defined.

STORM

UNIVERSAL DIN RAIL 35mm DRIVERS 24V DC



IP 20

Code	Description
800103	Rail 35mm Driver 60W 24V DC
800104	Rail 35mm Driver 100W 24V DC
800107	Rail 35mm Driver 60W 24V DC Dimmer*

* PWM / 1-10V DC

INDEPENDENT DRIVERS 24V DC



IP 20

Code	Description	Dimensions
800071	Driver 30W 24V DC	133x41x32
800105	Driver 60W 24V DC	225x43x30
800106	Driver 100W 24V DC	295x43x30
800018	Driver 60W 24V DC Dimmer*	225x43x30
800017	Driver 100W 24V DC Dimmer*	295x43x30
800101	Driver 60W 24V DC Dimmer**	195x50x30
800102	Driver 100W 24V DC Dimmer**	232x50x30

* Dali and Push Button
** Phase Cut / 1-10V DC

LED COLOUR CODES:

2 Warm 3 Neutral

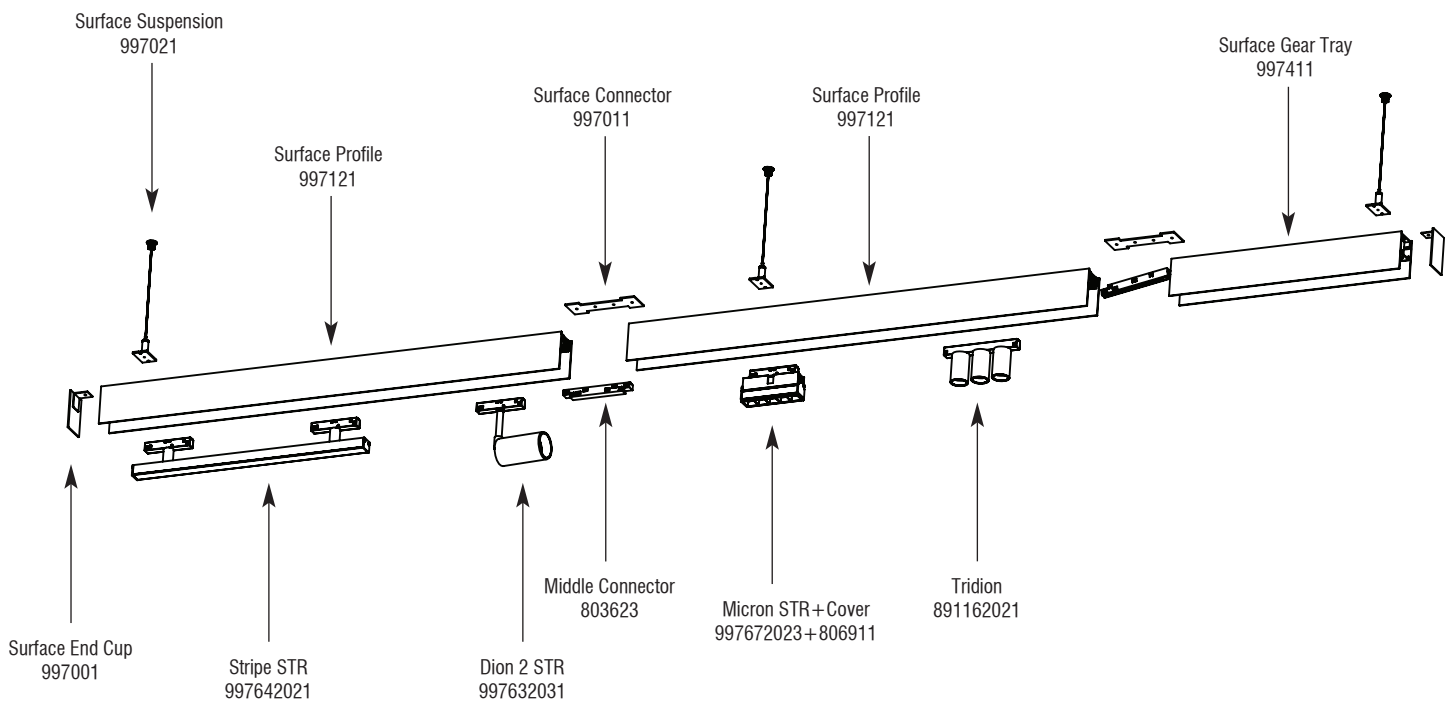
BEAM CODES:

01 spot 02 medium 03 wide

Colour Codes:

0 Colours 1 White 2 Titan 3 Black

STORM



STORM

