

# SOLO



*A floodlight with LED technology and high protection degree (IP65). It is ideal for outdoor lighting and for impressive highlighting of facades.*

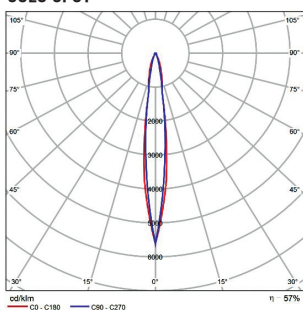
## Technical Features

- Body from die-cast aluminium, painted electrostatically in selected colour.
- Tempered protection glass 2mm (for SOLO) and 3mm (for SOLO 2).
- Pure light without IR/UV radiation.
- Operation life: 50,000 hours with efficiency > 80% of the initial luminous flux (L80B10).
- Supplied with 2x0,75mm NEOPRENE 1m cable.

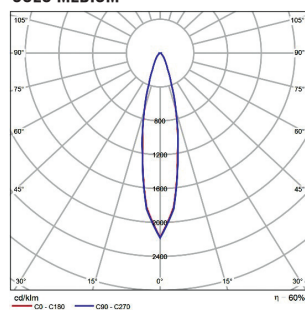
## Upon Request

- Available at 2700K.
- Available with highest colour rendering index (CRI).

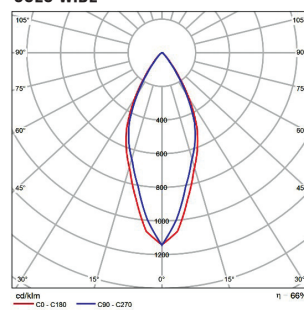
**SOLO SPOT**



**SOLO MEDIUM**

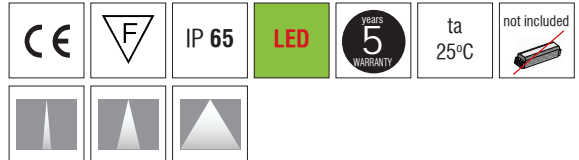
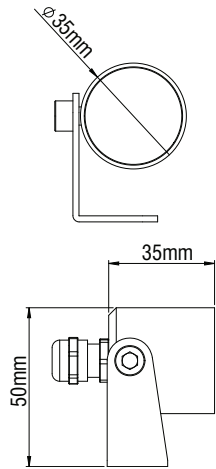


**SOLO WIDE**



# SOLO

## SOLO



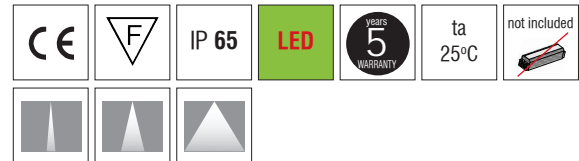
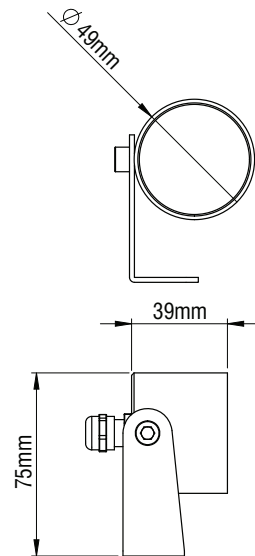
- Aluminium body.
- Lens in Spot, Medium and Wide.
- 2W power consumption driven at 700mA.
- CRI: min. 80 / SDCM: 3.
- Luminous Efficacy:  
2W: 4000 K: 152 Lm/Watt  
2W: 3000 K: 142 Lm/Watt

Code	Description	Kg
84750	SOLO 2W IP65	0,090

### DRIVERS DIMMER

CODES	MODULES	DRIVERS DIMMER	
		700mA 32W IP20	700mA 38W IP20
84750	SOLO 2W IP65	1 - 5 modules	4 - 15 modules
		1 - 5 modules	4 - 18 modules

## SOLO 2



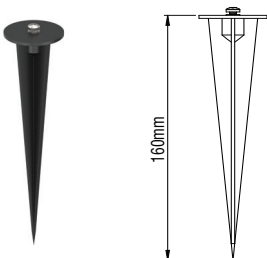
- Aluminium body.
- Reflector in Spot, Medium and Wide.
- 6W power consumption driven at 350mA.
- CRI: min. 80 / SDCM: 3.
- Luminous Efficacy:  
6W: 4000 K: 150 Lm/Watt  
6W: 3000 K: 144 Lm/Watt

Code	Description	Kg
84751	SOLO 2 6W IP65	0,140

### DRIVERS DIMMER

CODES	MODULES	DRIVERS DIMMER	
		350mA 18W IP20	350mA 18W IP20
84751	SOLO 2 6W IP65	1 - 2 modules	1 - 3 modules
		1 - 2 modules	1 - 3 modules

## ACCESSORIES



- Plastic picket.

Code	Description	Kg
804112	Picket	0,150

<b>LED COLOUR CODES:</b> 2 Warm 3 Neutral	<b>BEAM CODES:</b> 01 spot 02 medium 03 wide	<b>Colour Codes:</b> 0 Colours 1 White 2 Titan 3 Black
--	---	---