

TECHNICAL DATA SHEET

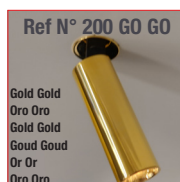
200CENT ROUND 500LM SWING 90 TRIM IP54

BATHROOM - STANZA DA BAGNO - BADEZIMMER - BADKAMER - SALLE DE BAINS - CUARTO DE BAÑO

Adjustable 0° - 90°

Ø27 mm - h = 70 mm

Material: Aluminium



200CENT ROUND SWING 90 500LM CRI 92

2200°K	2700°K	3000°K	4000°K
REF N° 553 28 530	REF N° 553 28 930	REF N° 553 28 830	REF N° 553 28 730

5,9 W - 500LM - 2 step MacAdam - **A+**
Serial wiring - - - -
Requires remote LED driver - 700mA
Standard Perfectbeam 24° - Optional 44° beam
Ultra low glare (UGR < 13)

REMOTE LED DRIVER ON/OFF

REF N° 697 00 015 min.2W max. 32W

REF N° 697 00 025 min.2W max. 50W

230V/50Hz - - current controlled
 - - IP20 - 700mA - not dimmable

REMOTE LED DRIVER DIM

REF N° 697 60 040 min.3W max. 60W

1-10V DALI PUSH

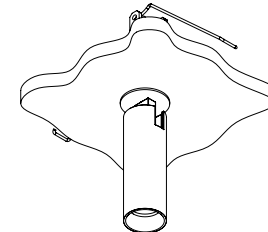
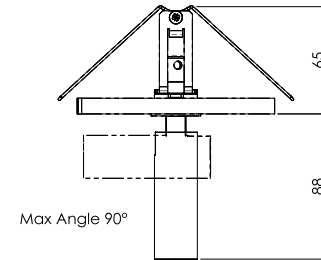
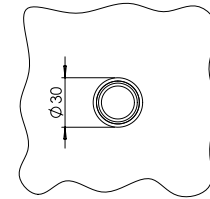
REF N° 697 30 015 min 2W max 20W DALI

REF N° 697 60 015 min 2W max 20W 1-10V PUSH

REF N° 697 77 010 min 2W max 10W PHASE DIM

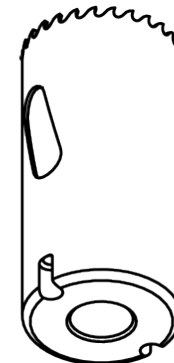
REF N° 697 77 020 min 11W max 20W PHASE DIM

230V/50Hz - - current controlled
 - - IP20 - 700mA - dimmable



INSTALLATION KIT

REF N° 680 01 027 standard holesaw Ø 27 mm



BEAM ANGLES

STANDARD (included) beam angle 24°
REF N° 203 20 044 (option) beam angle 44°