

# TECHNICAL DATA SHEET

## 200CENT ROUND 250LM ADJ TRIMLESS IP20

INDOOR - INTERNO - INNERBEREICH - INTERIEUR - INTÉRIEUR - INTERIOR

Adjustable 0° - 25°

114x134 mm - h = 100 mm

Material: CALCYT® plaster

Ref N° 200 BL CR



Black Chrome - Nero Cromo  
Schwarz Chrom - Zwart Chrom  
Noir Chrome - Negro Cromo

Ask for a bespoke solution or your favorite RAL color

Chiedere una soluzione personalizzata con il vostro colore RAL preferito

Fragen Sie nach einer individuellen Lösung oder Ihrer Lieblings-RAL-Farbe

Vraag om een niet standaard afwerking of je favoriete RAL kleur

Demandez une solution sur mesure ou votre couleur RAL préférée

Solicite una solución a medida o su color favorito de la carta RAL

### 200CENT ROUND ADJ IP20 250LM CRI 92

2200°K	2700°K	3000°K	4000°K
REF N° 530 27 530	REF N° 530 27 930	REF N° 530 27 830	REF N° 530 27 730

3 W - 250LM - 2 step MacAdam - **A+**  
Serial wiring - - - -   
Requires remote LED driver - 1050mA  
Standard narrowbeam 12° - Optional 8° beam  
Ultra low glare (UGR < 13)

Ref N° 200 BL BL



Black Black - Nero Nero  
Schwarz Schwarz - Zwart Zwart  
Noir Noir - Negro Negro

Ref N° 200 WH BL



White Black - Bianco Nero  
Weiß Schwarz - Wit Zwart  
Blanc Noir - Bianco Negro

Ref N° 200 BL WH



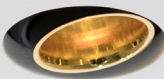
Black White - Nero Bianco  
Schwarz Weiß - Zwart Wit  
Noir Blanc - Negro Bianco

Ref N° 200 WH WH



White White - Bianco Bianco  
Weiß Weiß - Wit Wit  
Blanc Blanc - Bianco Bianco

Ref N° 200 BL GO



Black Gold - Nero Oro  
Schwarz Gold - Zwart Goud  
Noir Or - Negro Oro

Ref N° 200 WH GO



White Gold - Bianco Oro  
Weiß Gold - Wit Goud  
Blanc Or - Bianco Oro

Ref N° 200 BL CO



Black Copper - Nero Rame  
Schwarz Kupfer - Zwart Koper  
Noir Cuivre - Negro Cobre

Ref N° 200 WH CO



White Copper - Bianco Rame  
Weiß Kupfer - Wit Koper  
Blanc Cuivre - Bianco Cobre

### REMOTE LED DRIVER ON/OFF

REF N° 697 00 015 min.2W max. 39W

REF N° 697 00 025 min.2W max. 50W

230V/50Hz - - current controlled  
 - IP20 - 1050mA - not dimmable

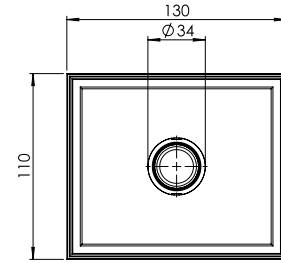
### REMOTE LED DRIVER DIM

REF N° 697 60 025 min.3W max. 60W

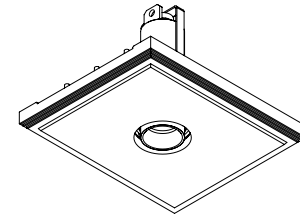
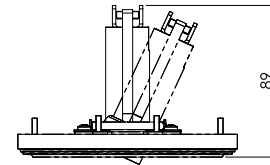
1-10V DALI PUSH

REF N° 697 70 050 min 2W max 45W PHASE DIM

230V/50Hz - - current controlled  
 - IP20 - 1050mA - dimmable



Max angle 25°



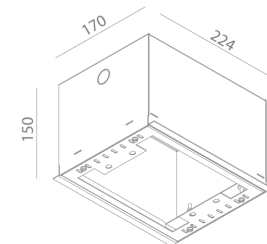
### INSTALLATION KIT

**STANDARD** (included) installation system for ceiling 9 - 12 - 15 mm

REF N° 200 99 025 installation system for gypsum ceiling 25 mm

REF N° 200 99 030 installation system for gypsum ceiling 30 mm

REF N° 827 00 000 Concrete box 200Cent - Galvanized steel



### BEAM ANGLES

**STANDARD** (included) beam angle 12°  
REF N° 203 20 008 (option) beam angle 8°