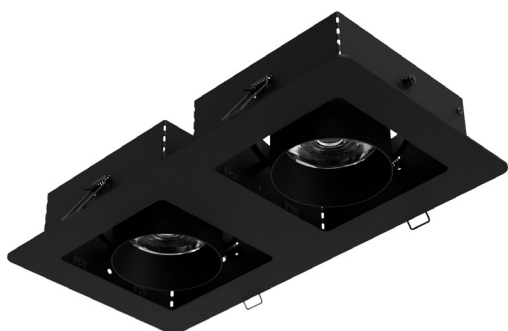


Cardanic Twinspot



Glare-free to due shielded lens technology

Low weight and compact modern design

Low maintenance costs with lens technology

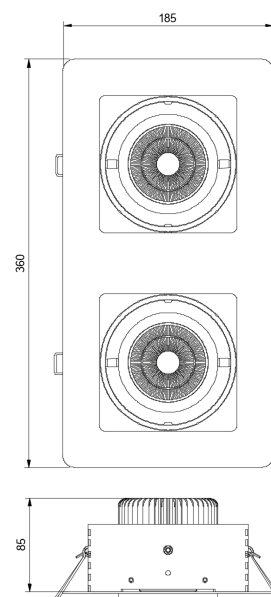
2 luminaire head positions to reach upper wall segments

Fast installation with spring fixation



Installation:	Ceiling recessed
Optic:	Linse 12°/24°/38°/55°
Driver:	FIX, DALI
Materials:	Luminaire head - Aluminium Housing - Stahlblech Lens - Polycarbonate
Colors:	Black RAL 9005, White RAL 9003
Weight:	2.4 kg
Lifetime:	L80B10 50.000 Hours
Ambient temperature:	0 / +35° C

Dimensions:



Ceiling cutout: 340 x 165 mm

Code	Power	CRI	CCT	Lumen
CTS	2 x 16 W	> 90	2700 K	2 x 1300 lm
CTS	2 x 16 W	> 90	3000 K	2 x 1400 lm
CTS	2 x 16 W	> 95	3200 K	2 x 1300 lm
CTS	2 x 16 W	> 90	4000 K	2 x 1600 lm
CTS	2 x 28 W	> 90	2700 K	2 x 2200 lm
CTS	2 x 28 W	> 90	3000 K	2 x 2400 lm
CTS	2 x 28 W	> 95	3200 K	2 x 2200 lm
CTS	2 x 28 W	> 90	4000 K	2 x 2700 lm

Tolerance of light output and color temperature: +/- 10%

Order example:

CS	-	Power	-	CRI / CCT	-	Beam	-	Color	-	Driver	-	OPTION
CTS	-	2x16	-	930	-	55	-	BL	-	DALI	-	XYZ

We reserve the right to change product specifications without prior information