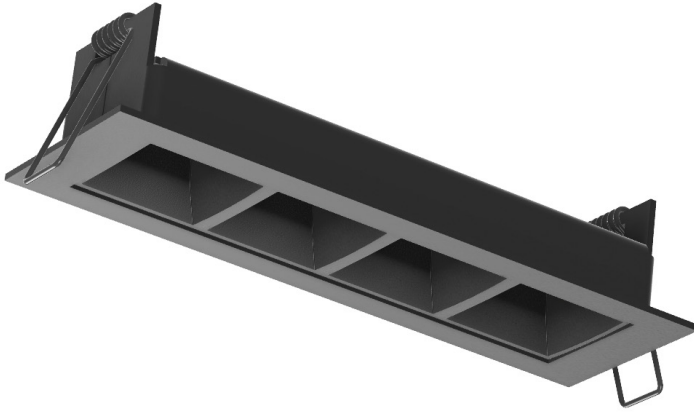


Linear Downlight 190



Glare-free to due innovative Dark Light Optics

Harmonious distribution of light due to rectangular light footprint

Low weight and compact modern design

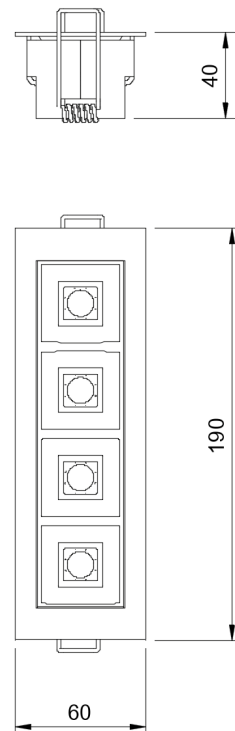
Low maintenance costs with lens technology

Fast installation with spring fixation



Installation: Optic:	Ceiling recessed Lens 50°, 80°
Driver: Materials:	FIX, DALI, Bluetooth® Housing - Aluminium Optic - Polycarbonate
Colors:	Black RAL 9005, White RAL 9003
Weight:	0,4 kg
Lifetime:	L80B10 50.000 Hours
Ambient temperature:	0 / +35° C

Dimensions:



Ceiling cutout: 180 x 50 mm

Code	Power	CRI	CCT	Lumen
LD190	6 W	> 90	3000 K	660 lm
LD190	6 W	> 90	4000 K	690 lm
LD190	6 W	> 90	2700 - 6500 K	630 lm
LD190	8 W	> 90	3000 K	980 lm
LD190	8 W	> 90	4000 K	1020 lm

Tolerance of light output and color temperature: +/- 10%

Order example:

LD190	-	Power	-	CRI / CCT	-	Beam	-	Color	-	Driver	-	OPTION
LD190	-	6	-	930	-	80	-	BL	-	DALI	-	XYZ

We reserve the right to change product specifications without prior information