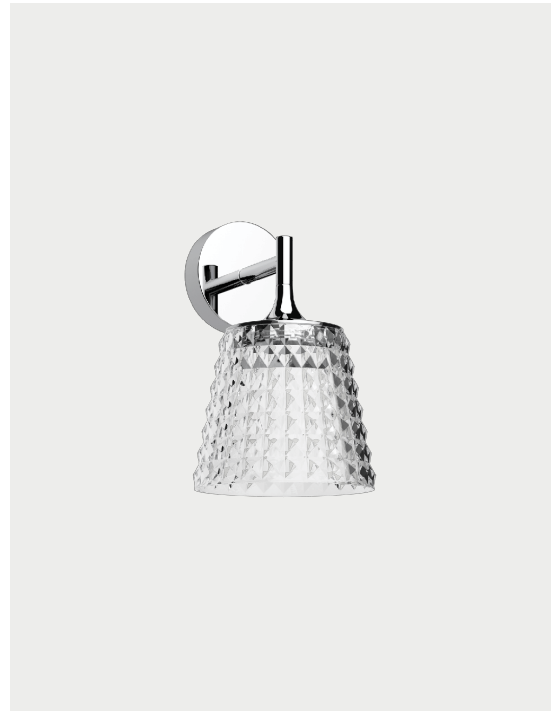


Valentina,
design by Andrea Tosetto, 2018

Wall

Valentina is a family of lamps characterised by a transparent methacrylate lampshade diffuser embellished by special prismatic workmanship designed to amplify the light. Available in a suspension, wall and table version, Valentina lamps are perfect for infusing spaces with a soft and romantic atmosphere.



Valentina	Light source	Frame Aluminium	Diffuser: Methacrylate	Code
	LED • 2700 K • 1 x 6.5W 600 lm • 220-240V • CRI 92 • MacAdam 3-Step LED and driver included	Chrome	Crystal	166003
	LED • 3000 K • 1 x 6.5W 650 lm • 220-240V • CRI 92 • MacAdam 3-Step LED and driver included	Chrome	Crystal	166004

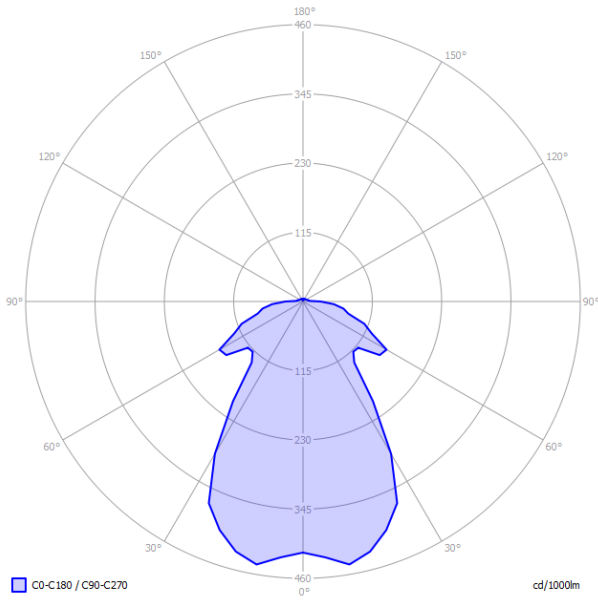
Net weight: 0.42 kg	Gross weight: 0.54 kg	Parcels: N°1	Volume: 0.011 m³
---------------------	-----------------------	--------------	------------------

CE	ERC	IP20	Energy Saving	Dim Triac
----	-----	------	---------------	-----------

LODES

Polar diagram

Valentina



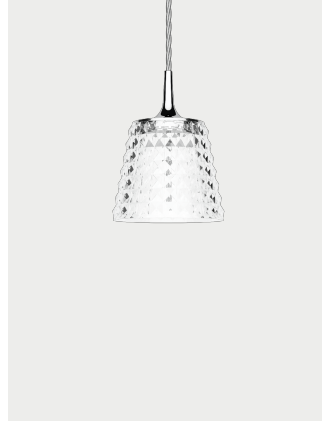
- LED
- 3000 K
 - 1 × 6.5W | 650 lm
 - 220-240V
 - CRI 92
 - MacAdam 3-Step
- LED and driver included

- LED
- 2700 K
 - 1 × 6.5W | 600 lm
 - 220-240V
 - CRI 92
 - MacAdam 3-Step
- LED and driver included

Other applications of Valentina



Table



Suspension