



framed

suspension lamp circle wall circle suspension up-down leaning floor lamp



Photography: Jaro van Meerten



framed

The Framed collection, designed by Jacco Maris, is a collection of basic geometric shapes made of hot rolled steel profiles. The lighting system is integrated in the steel frame. The light lines displayed by this design emphasize the interior architecture in a unique way. They create a light spectacle against wall, ceiling, floor or table. The robust steel frame gives this collection a high functionality and multiple possibilities in terms of shape and scale.



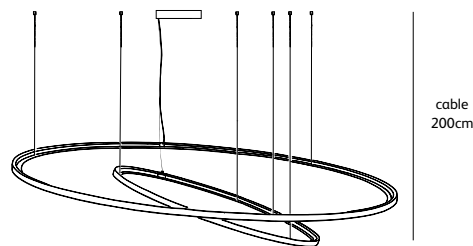
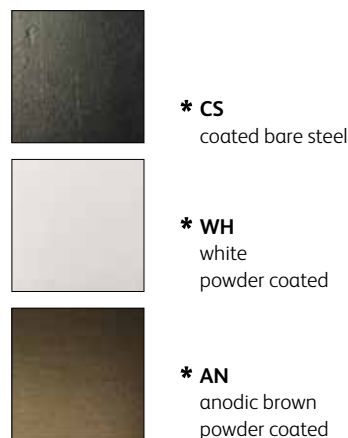
Photography: Dré Wouters
Architect: Bob Manders

framed

suspension lamp circle (suitable as up light or down light)



colors & materials



FR.100.CI.CS & FR.170.CI.CS

Ø 50cm	Ø 70cm	Ø 100cm	Ø 135cm	Ø 170cm
Order code FR.50.CI.*	Order code FR.70.CI.*	Order code FR.100.CI.*	Order code FR.135.CI.*	Order code FR.170.CI.*
Dimensions Ø 50cm	Dimensions Ø 70cm	Dimensions Ø 100cm	Dimensions Ø 135cm	Dimensions Ø 170cm
Standard cable length 200cm	Standard cable length 200cm	Standard cable length 200cm	Standard cable length 200cm	Standard cable length 200cm
Light source neon flex LED 25W / 2700K / 750 lm	Light source neon flex LED 30W / 2700K / 1050 lm	Light source neon flex LED 45W / 2700K / 1500 lm	Light source neon flex LED 55W / 2700K / 2025 lm	Light source neon flex LED 75W / 2700K / 3000 lm
Weight Net. weight 4,2kg	Weight Net. weight 6kg	Weight Net. weight 8kg	Weight Net. weight 10kg	Weight Net. weight 12kg
Driver Dimmable driver Dimmer not included	Driver Dimmable driver Dimmer not included	Driver Dimmable driver Dimmer not included	Driver Dimmable driver Dimmer not included	Driver Dimmable driver Dimmer not included
Standard driver box 24x8x4cm (white)	Standard driver box 24x8x4cm (white)	Standard driver box 24x8x4cm (white)	Standard driver box 24x8x4cm (white)	Standard driver box 24x8x4cm (white)
Optional round driver box	Optional round driver box	Optional round driver box	Optional round driver box	Optional round driver box

framed

wall circle



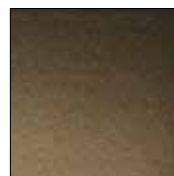
colors & materials



* **CS**
coated bare steel

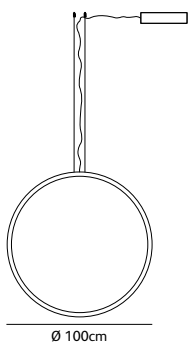


* **WH**
white
powder coated



* **AN**
anodic brown
powder coated

FR.100.WA.CI.T2.CS



Order code

FR.100.WA.CI.T1.*

Dimensions

Ø **100cm**

Standard cable length **200cm**

Light source **neon flex LED**

45W / 2700K / 1500 lm

Weight

Net. weight **8kg**

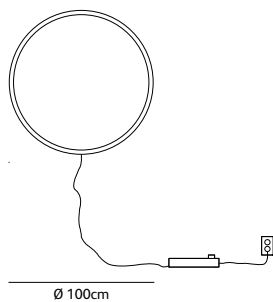
Driver

Dimmable driver

Dimmer not included

Standard driver box

24x8x4cm (white)



Order code

FR.100.WA.CI.T2.*

Dimensions

Ø **100cm**

Standard cable length **200cm**

Light source **neon flex LED**

45W / 2700K / 1500 lm

Weight

Net. weight **8kg**

Driver

Dimmable driver

Floor dimmer switch included

T1 = using two suspension cables that are directly attached to the ceiling

T2 = using a bracket on the wall

framed

suspension up-down



colors & materials



* **GM**
gunmetal
powder coated

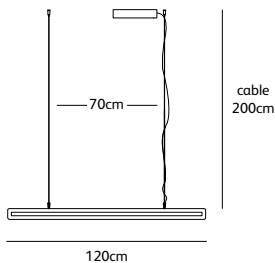


* **WH**
white
powder coated

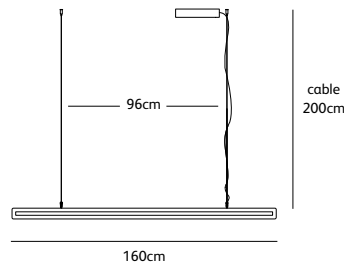


* **AN**
anodic brown
powder coated

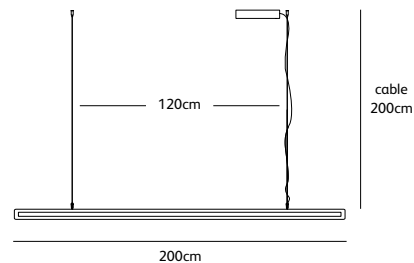
FR.200.SU.UP/DOWN.GM



Order code	FR.120.SU.UP/DOWN.*
Dimensions	
Wxdxh	120x2,5x7cm
Standard cable length	200cm
Light source	
	LED 13W up – 19W down / 2700K / 1750 lm
Weight/Packaging	
Net. weight	4kg
Gross weight	6kg
Packaging	125x16,5x16,5cm
Driver	
	Dimmable driver
	Dimmer not included
Standard driver box	24x8x4cm (white)



Order code	FR.160.SU.UP/DOWN.*
Dimensions	
Wxdxh	160x2,5x7cm
Standard cable length	200cm
Light source	
	LED 19W up – 26W down / 2700K / 2500 lm
Weight/Packaging	
Net. weight	5,5kg
Gross weight	8kg
Packaging	165x16,5x16,5cm
Driver	
	Dimmable driver
	Dimmer not included
Standard driver box	24x8x4cm (white)



Order code	FR.200.SU.UP/DOWN.*
Dimensions	
Wxdxh	200x2,5x7cm
Standard cable length	200cm
Light source	
	LED 24W up – 34W down / 2700K / 3200 lm
Weight/Packaging	
Net. weight	7kg
Gross weight	9,5kg
Packaging	205x16,5x16,5cm
Driver	
	Dimmable driver
	Dimmer not included
Standard driver box	24x8x4cm (white)

framed

leaning floor lamp



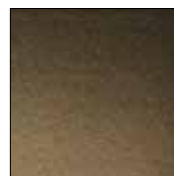
colors & materials



*** CS**
coated bare steel

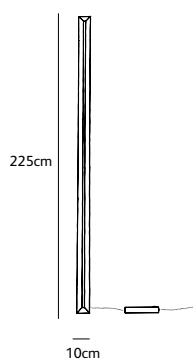


*** WH**
white
powder coated



*** AN**
anodic brown
powder coated

FR.225.FL.CS



Order code

FR.225.FL.*

Dimensions

Wxdxh **10x2,5x225cm**

Light source

LED strip 40W LED / 2700K / 3840 lm

Weight/Packaging

Net. weight **10kg**

Gross weight **12kg**

Packaging **230x16,5x16,5cm**

Dimmer

Floor dimmer switch included

IP 20    Other sizes on request.

Colors and materials as visible on the images may differ slightly from reality.
Any typing errors in the text and interim changes to the collections or specifications are all subject to change.

Jacco Maris Design info@jaccomaris.com www.jaccomaris.com
20/01/2020