

ceiling 

Recessed Spotlight
Fos 09 code: 01.A.009

Finishes
Natural Plaster Finish

Dimensions / Weight
211x115x63mm / 800g/pc

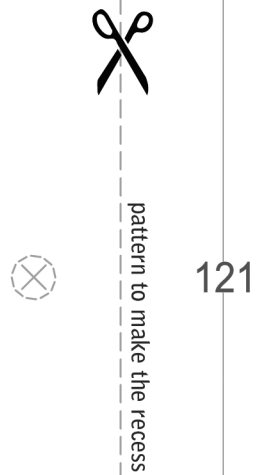
Lamp Holder
GU10 (included)

Lamp type / Max consumption / Voltage
MR16 Led or Halogen / 2 x 50Watt / 220-240V (not included)
note: This recessed spotlight can also be used with GU 5.3 / MR16 / 12V

Features



Copyright © 2016 NamaModular. All rights reserved



Fos 09 code: 01.A.009

217



MADE IN GREECE