



USER INSTRUCTIONS

FORNELL ABF1

BY **ANDREAS BOZARTH FORNELL**
2017

Congratulations on choosing this FORNELL pendant, designed by Andreas Bozarth Fornell. We hope you will enjoy using this pendant and follow these instructions to ensure correct installation. If you have any questions or comments, please do not hesitate to contact us by mail on:

info@andtradition.com

CONTENTS

- A - Pendant with wires and cable installed
- B - 2x suspension fasteners
- C - Canopy with ceiling bracket, 1-10V dimmable driver and 4 x ceiling spacers (in separate box)

Please read these instructions carefully and retain them for future reference to ensure that the lamp is correctly installed should it be moved or sold. For your own safety, please study each step of this instruction manual before you commence installation. &tradition are not responsible for any faults or damages caused by not following these instructions correctly. Do not modify this lamp in any way.

INSTALLATION SUGGESTIONS

The Fornell pendant can be installed alone or in groups and is ideal for use in offices as well as at home.

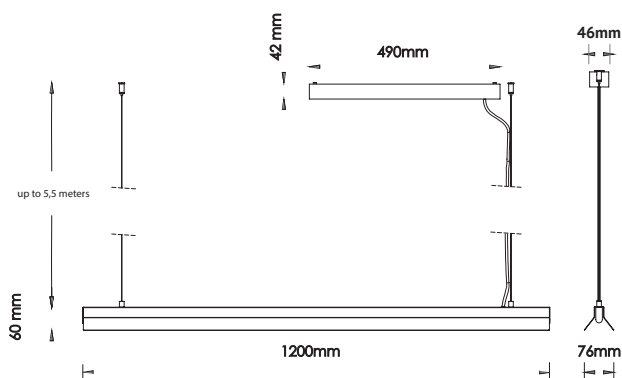
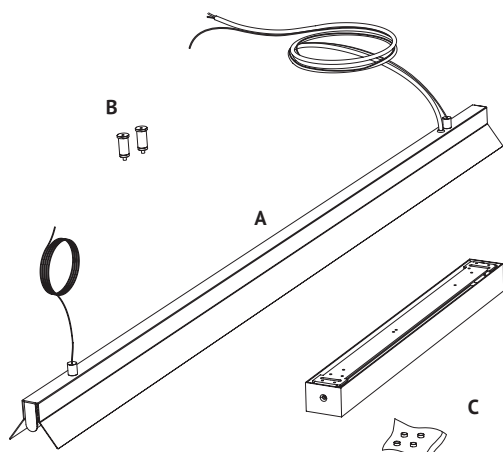
Visit our website for more inspiration:
www.andtradition.com

SAFETY PRECAUTIONS

- This pendant is only intended for interior use.
- Each pendant needs its own canopy and driver.
- Prior to any work on the pendant always switch off mains.
- Follow thoroughly the installation instructions on the next page.
- Do not attempt installation of the product if you are not competent to do so yourself.
- Consult a professional qualified electrician if in any doubt.

CLEANING INSTRUCTIONS

- To avoid scratches, use only a soft dry cloth to clean the pendant.
- Never use alcohol or other cleaning agents or solvents.

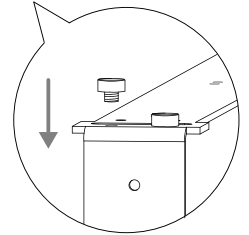
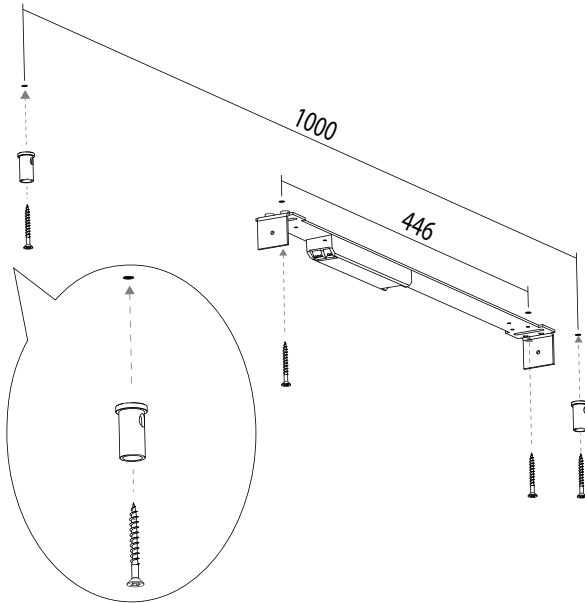


ASSEMBLY INSTRUCTIONS

STEP 1

Mounting suspension fasteners and ceiling bracket

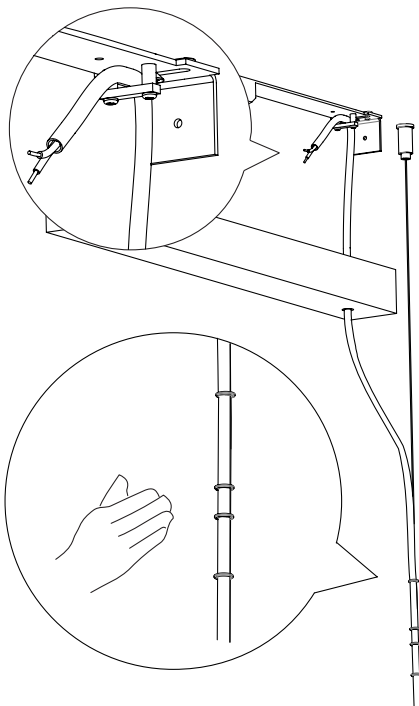
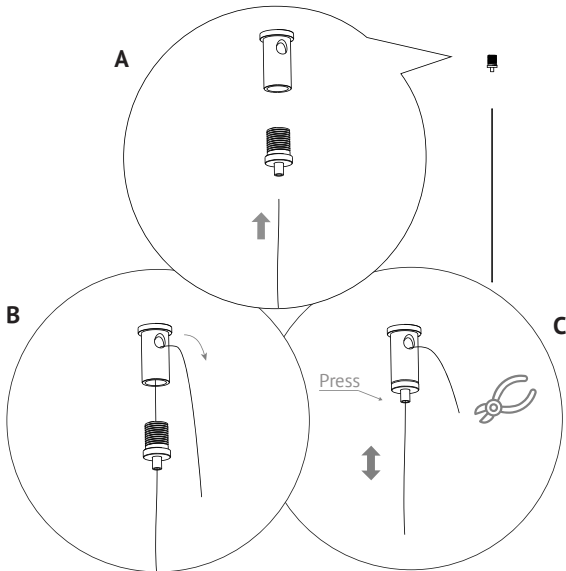
- Define the location and orientation of the pendant and canopy
- Mark the suspension points for the two suspension fasteners (the distance between them is 1000 mm)
- Mark the holes for the ceiling bracket installation (the distance is 446 mm)
- Insert the appropriate plugs for the type of ceiling you have, and install the fixture (wall plugs not included)
- Screw the two suspension fasteners and the ceiling bracket into the ceiling using appropriate plugs and screws (not included)
- Screw the metal plate in the ceiling
- The ceiling bracket is supplied with 4 ceiling spacers for installations where some distance from the ceiling is needed



STEP 2

Suspending the pendant

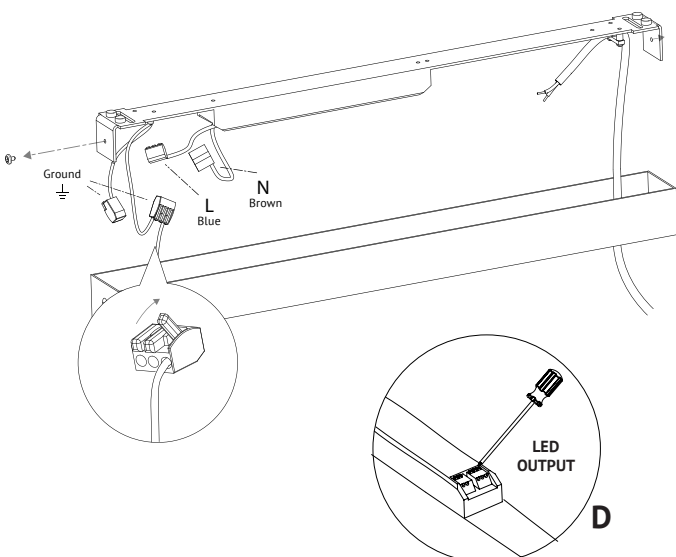
- After the base of the suspension fastener is mounted to the ceiling, push the steel wire through the top part of the fastener, until it comes out from the small hole of the fastener. (A + B)
- Screw the fasteners top parts to base, and push the steel wire to adjust the height of your pendant. The steel wire can move downwards, if you press the small button on the fastener. (C)
- If desired the excess wire can be cut



STEP 3

Wiring

- Gently scroll down the silicone rings holding the electrical cable along with the steel wire
- Pass the cable from the pendant through the canopy and connect the cables to the driver output (follow the notes below and the instructions on the next page)
- Respect thoroughly the polarity of the cables
- The blue wire coming from the pendant = minus
- The brown wire coming from the pendant = plus
- The pendant allows several types of dimming and simple on/off control (see next page for details)



1 - Connecting ground

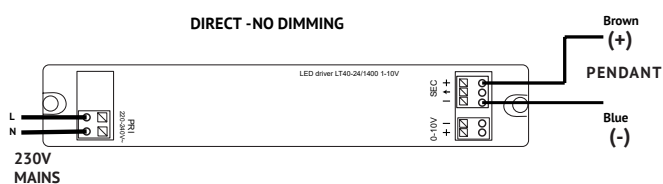
There are two ground wires (yellow-green cables) attached to the canopy plate. One connects to the canopy metal housing, and the other ground wire connects to the ground of mains installation.

2 - Connecting to mains

The pendant driver has a market input with "230-240V-PRI" with a blue and brown cable with connection attached. Connect this blue wire to the blue wire on the mains installation with the clicking connection. Connect the brown cable to the brown cable of mains installation.

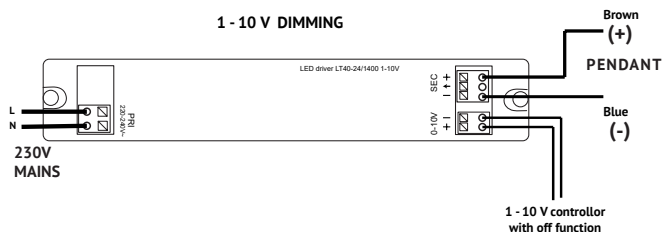
3 - Connecting the pendant cable.

Make sure the cable is well secured by the strain relief on the ceiling bracket.



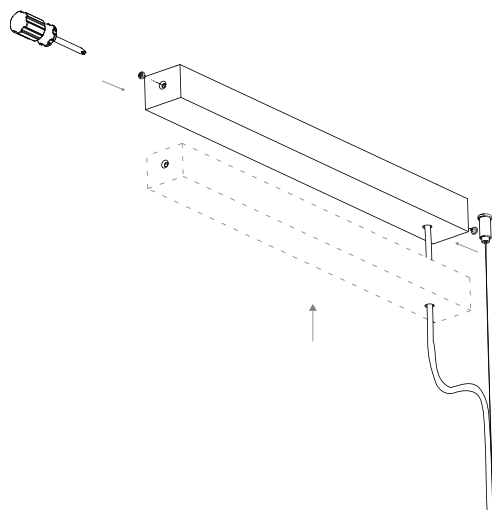
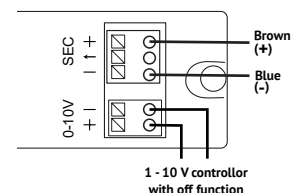
DIMMING-DIRECT ON/OFF

- For installation without dimming, connect the brown cable from the pendant in the plus (+) terminal of the driver, and connect the blue cable from the pendant to the minus terminal (-). The terminals of the driver work by pressing the small push button shown in picture D.



1-10V DIMMING

- For dimming installations connect the brown cable from the pendant in the plus (+) terminal of the driver, and connect the blue cable from the pendant to the minus terminal (-). We advise you to use a 1-10V controller with off-function.



STEP 4

Mounting the canopy

- Install the canopy by means of the two screws on the sides.
- Pull gently the silicone rings up along the suspension wire

Other Control options

For DALI and push/dim controlling, a Dimbox can be purchased separately for installation in the canopy. The Dimbox also enables grouping of several pendants. For more information, please contact us.

TECHNICAL DATA

- Linear LED SMD -> CRI90+ ; R9= 65 ; 3000 K
- 220-240V 50/60Hz - 28W
- 1500lm
- 230 V / 50-60 Hz
- IP20
- 3.5 Kg

