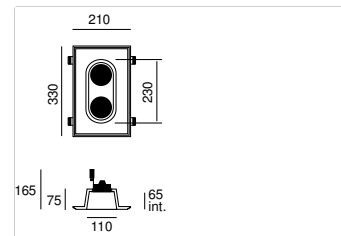


atelier sedap / LIGHTING

3067 / TIQAL DOUBLE Design Atelier Sedap

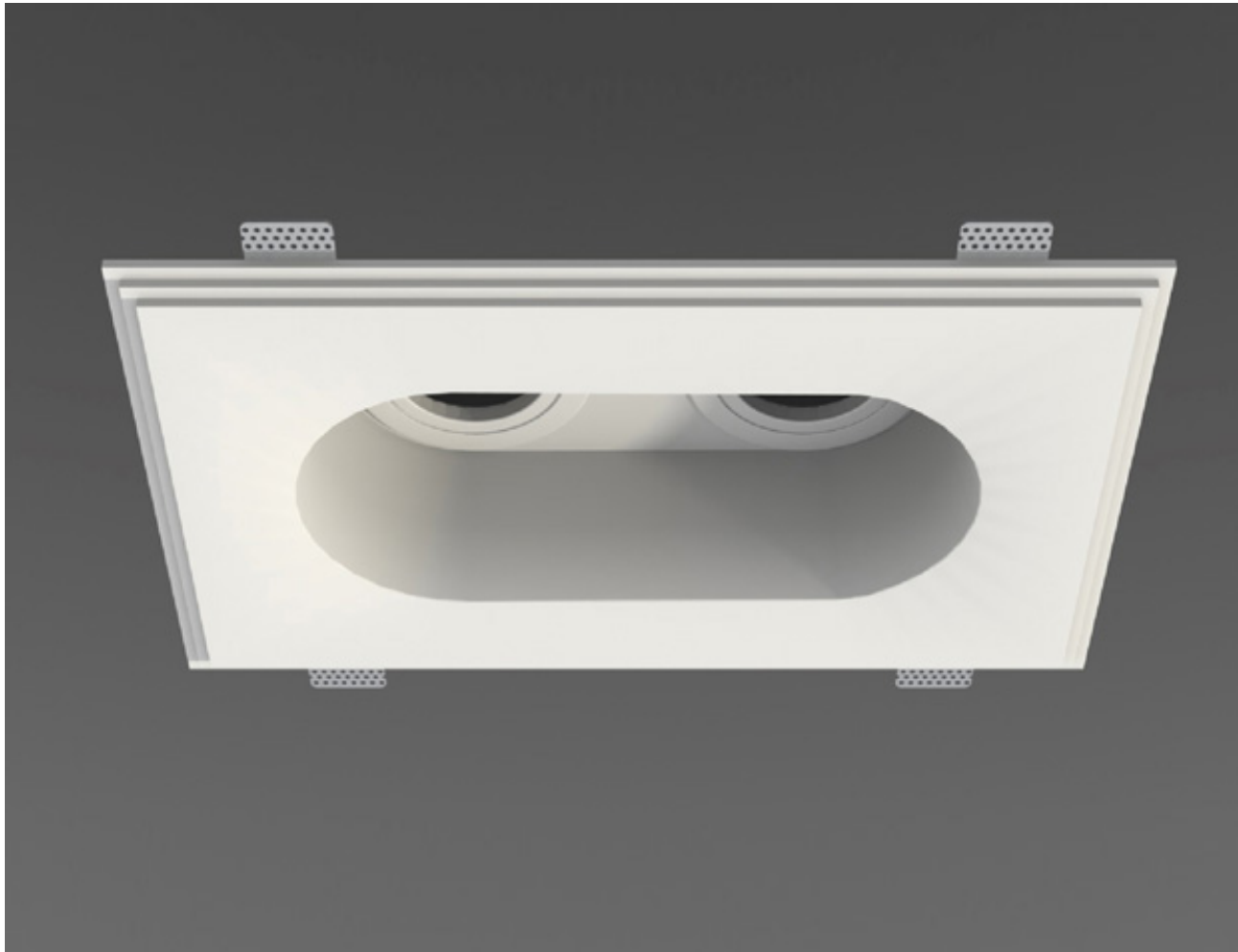
High strength plaster recessed fitting, with MR16 or GU10 equipment, especially designed for ceilings.



Weight

2.5 Kg

Orientation



FINISHES

Natural plaster finish

AA

LIGHT SOURCES

REFERENCE	SOURCES	FEATURES
3067_05	2 x MR16 adjustable downlights included (black or white) P. maxi 2 x 50 W / GX5.3 (Bulb and power supply not included)	IP 20 CE F 960°C
3067_07	2 x GU10 adjustable downlights included (black or white) P. maxi 2 x 50 W / GU10 / 230V (Bulb not included) Overall dimension 165mm	IP 20 CE F 960°C