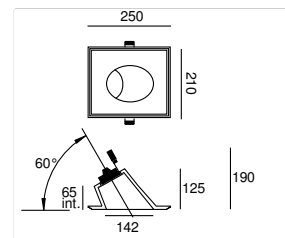


atelier sedap / LIGHTING

3066 / 30° TIQAL Design Atelier Sedap

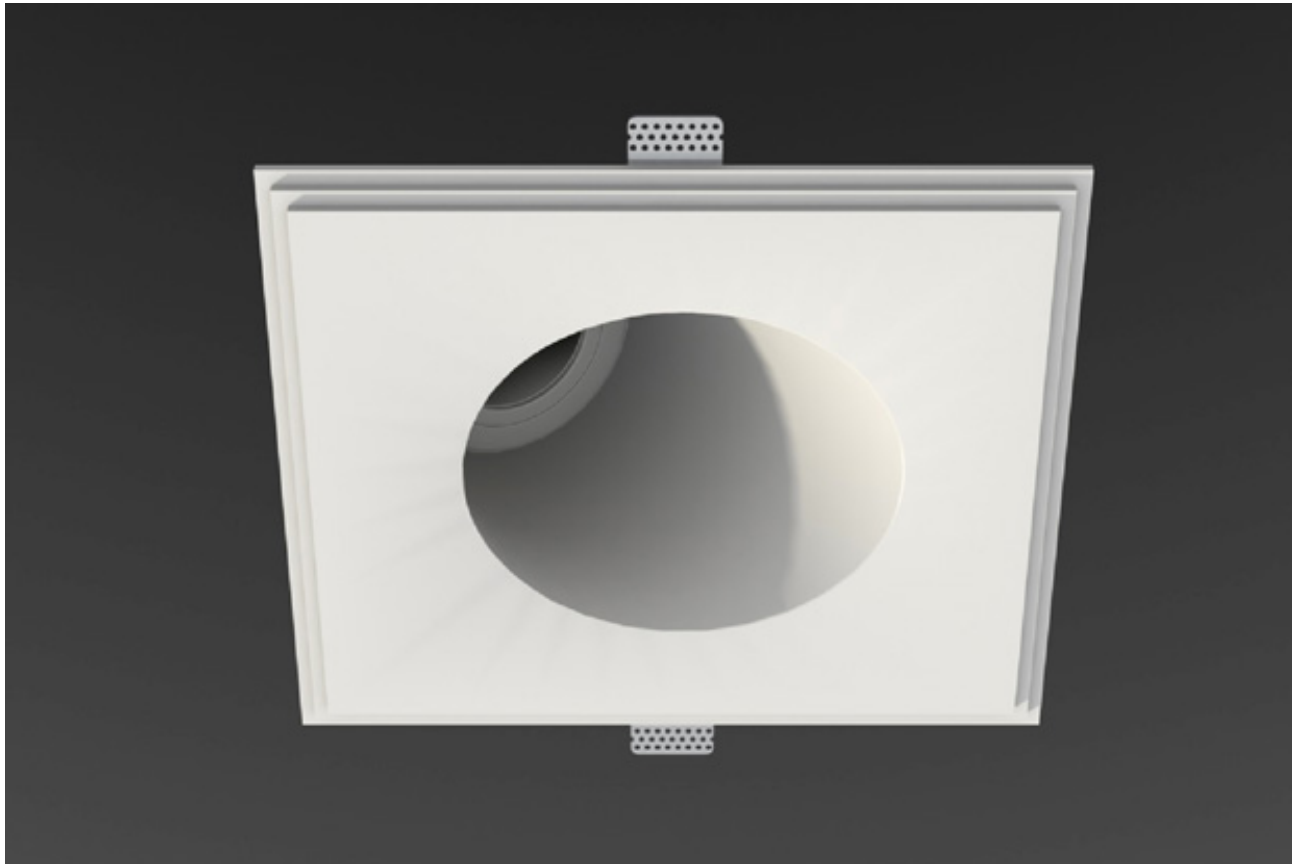
High strength plaster recessed fitting, with MR16 or GU10 equipment (LED or dichroic), especially designed for ceilings.



Weight

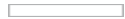
1.8 Kg

Orientation









FINISHES

Natural plaster finish



AA

LIGHT SOURCES

REFERENCE	SOURCES	FEATURES
3066_05	1 MR16 adjustable downlight included (black or white) P. maxi 50 W / GX5.3 (Bulb and power supply not included)	 IP 20   960° C
3066_07	1 GU10 adjustable downlight included (black or white) P. maxi 50 W / GU10 / 230V (Bulb not included)	 IP 20   960° C
	Overall dimension 190MM	