

Luisa

ref. LS04G

Pendant lamp
Lámpara colgante

SIMETECH® by arturo alvarez

INTERIOR
DESIGN
**BEST
OF
YEAR 2014**

Innovative translucent shading
lighting solution

50cm | 20in

Ø8cm | 3,2in

150cm | 59,1in



Ø45cm | 18in

Luisa Collection



LS04



LS04G

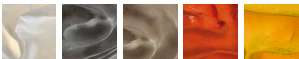
MATERIAL FINISHES MATERIALES Y ACABADOS

LAMPSHADE

TULIPA

SIMETECH® by arturo alvarez

One colour to choose
Un color a elegir



Stainless steel
Acero inoxidable

CANOPY AND CABLE FLORÓN Y CABLE

Steel gloss nickel-plated
Acero níquel-satinado

Transparent cable
Cable transparente

LIGHT SOURCE FUENTE DE LUZ

230V - 50Hz

- E27 - Max. 1x100 W
- E27 LED - Max. 1x12 W
- E27 ECO - Max. 1x77 W
- E27 - Max. 1x23 W
- E27 LED - Max. 1x11 W

120V - 60Hz

- E26 Med. - Max. 1x100 W
- E26 Med. - Max. 1x42 W

ENERGY EFFICIENCY EFICIENCIA ENERGÉTICA

from A+ to E
desde A+ a E

OTHER TECHNICAL DATA OTROS DATOS TÉCNICOS

PACKAGING

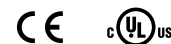
EMBALAJE

50x50x50cm | 20x20x20in
4kg | 9lb

ELECTRICAL FEATURES CARACTERÍSTICAS ELÉCTRICAS



CERTIFICATIONS CERTIFICACIONES



Luisa

LED

ref. **LS04G-LD**

LED / DIMMABLE

Pendant lamp

Lámpara colgante

SIMETECH® by arturo alvarez

INTERIOR
DESIGN
**BEST
OF
YEAR 2014**

Innovative translucent shading
lighting solution

50cm | 20in

Ø14,2cm | 5,6in

150cm | 59,1in



Ø45cm | 18in

Luisa Collection



LS04



LS04G

MATERIAL FINISHES MATERIALES Y ACABADOS

LAMPSHADE

TULIPA

SIMETECH® by arturo alvarez

One colour to choose

Un color a elegir



Stainless steel
Acero inoxidable

CANOPY AND CABLE

FLORÓN Y CABLE

Steel gloss nickel-plated
Acero níquel-satinado

Transparent cable
Cable transparente

LIGHT SOURCE FUENTE DE LUZ

230V - 50Hz

⊙ 24,9W 3000K 2353lm built-in
upon request 2700K 2223lm

Dimming system: DALI / Switch DIM
upon request PHASE CUT

120V - 60Hz

⊙ 16,6W 3000K 1530lm built-in
upon request 2700K 1449lm

Dimming system: 0-10 V

ENERGY EFFICIENCY

EFICIENCIA ENERGÉTICA

from A++ to A
desde A++ a A

OTHER TECHNICAL DATA OTROS DATOS TÉCNICOS

PACKAGING

EMBALAJE

50x50x50cm | 20x20x20in

4,6kg | 10,1lb

ELECTRICAL FEATURES

CARACTERÍSTICAS ELÉCTRICAS



CERTIFICATIONS

CERTIFICACIONES

