

Technical Data Sheet

Last data update

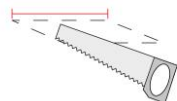
4/1/2016

9010
novantadieci®



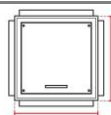
Req. space behind the plasterboard

100mm



hole on the plasterboard

585x585mm



External measures

580x580mm



Height without electrical part

50mm



Height including the electrical part

95mm

Notes on measures

General notes

SONORE

M900B-00

Accessory / CRISTALY

Surface finish : CRISTALY

Senza parte elettrica - Without electrical part - / -

Model

| | |
|----------------|-----------|
| Code | M900B |
| Product family | SONORE |
| Type | Accessory |

Material/Surface finish

| | |
|----------------|----------|
| Code | 004 |
| Material | CRISTALY |
| Surface finish | CRISTALY |

Dati sistema Sonore

Subwoofer

| | |
|-----------------------|------------------|
| N° Driver | 1 |
| Impedenza | 4 Ohm |
| Potenza nominale | 25x2 + 50x1Wrms |
| Potenza di picco | 50x2 + 100x1Wrms |
| Sensibilità | \ |
| Risposta in Frequenza | 25-200 Hz |

Centralina

| | |
|-------------|-------------|
| Passa Basso | 200Hz |
| Passa Alto | 200Hz |
| Ingresso | da rete LAN |

General Data

Protection Index

Isolation Class

| | |
|-----------------------|--------------------|
| Weight [Kg] | 17 |
| Country of production | MADE IN ITALY |
| Mounting instruction | 025.537_9010_REV01 |

Installation

| | |
|------------------|-----------------------|
| Multisize system | SI |
| Position | Wall/Ceiling lighting |

Packaging

| | |
|----------------------|--------------------|
| Type | White american Box |
| Measures AxBxH | 710x710x215mm |
| Gross Weight [Kg] | 19,222 |
| Master carton | NO |
| Quantity of articles | |
| Measures AxBxH | |