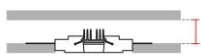
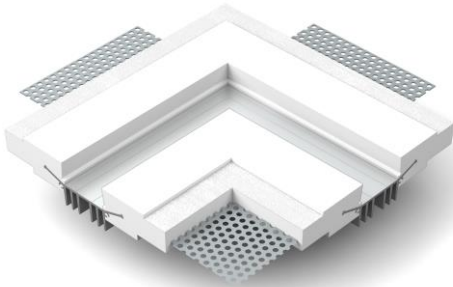


Technical Data Sheet

Last data update

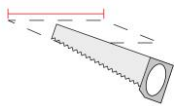
3/15/2016

9010
novantadieci®



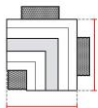
Req. space behind the plasterboard

40mm



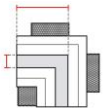
hole on the plasterboard

175*x175*mm



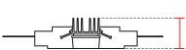
External measures

168*x168*mm



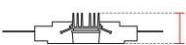
Measures of the light output

30x120mm



Height without electrical part

35mm



Height including the electrical part

35mm

Notes on measures

General notes

PROFILO

4190K-00

Recessed Profile / CRISTALY + ALUMITE

Surface finish : CRISTALY

Senza parte elettrica - Without electrical part - / -

Model

Code	4190K
Product family	PROFILO
Type	Recessed Profile

Material/Surface finish

Code	004
Material	CRISTALY + ALUMITE
Surface finish	CRISTALY

Electrical part

Code	00
Type	Senza parte elettrica - Without electrical part

General Data

Protection Index	
Isolation Class	
Weight [Kg]	0,85
Cover	Opal Polycarbonate
Country of production	MADE IN ITALY
Mounting instruction	

Installation

Multisize system	NO
Position	Wall/Ceiling lighting

Packaging

Type	White american Box
Measures AxBxH	238x238x121mm
Gross Weight [Kg]	0,9905
Master carton	NO
Quantity of articles	
Measures AxBxH	

Technical Data Sheet

4190K-00

Fotometric Data

<i>Electrical part</i>		<i>Illuminance</i>
<i>Power</i>		
<i>Light Output</i>	lm	
<i>Colour Temperature</i>		
<i>CRI</i>		
<i>Lamp Light Output</i>	%	
<i>Light Output of the lamp</i>		
<i>Beam Angle</i>		
<i>Beam Inclination</i>		

Accessories

LED strip



<i>Code</i>	021.790
<i>Power</i>	15W/m
<i>Tension</i>	24Vdc
<i>Flux</i>	1400lm/m
<i>Colour Temperature</i>	3000°K
<i>CRI</i>	85
<i>led/m</i>	120



<i>Code</i>	021.791
<i>Power</i>	18W/m
<i>Tension</i>	24Vdc
<i>Flux</i>	2000lm/m
<i>Colour Temperature</i>	3000°K
<i>CRI</i>	85
<i>led/m</i>	224



<i>Code</i>	021.792
<i>Power</i>	26W/m
<i>Tension</i>	24Vdc
<i>Flux</i>	3000lm/m
<i>Colour Temperature</i>	3000°K
<i>CRI</i>	85
<i>led/m</i>	224

Other Accessories



<i>Code</i>	029.005
<i>Description</i>	Replacement opal cover
<i>Notes</i>	in rotolo