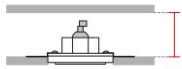


Technical Data Sheet

Last data update

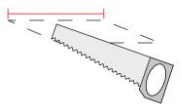
3/15/2016

9010
novantadieci®



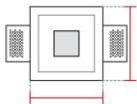
Req. space behind the plasterboard

100mm



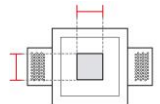
hole on the plasterboard

125x125mm



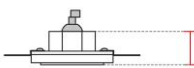
External measures

120x120mm



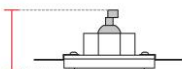
Measures of the light output

40x40mm



Height without electrical part

48mm



Height including the electrical part

95*mm

Notes on measures

General notes

INCASSO A PLAFONE E PARETE

4278-35

Recessed Spotlight / CRISTALY

Surface finish : CRISTALY

GU10 ø35 MAX 20W / 240V

Model

Code	4278
Product family	INCASSO A PLAFONE E PARETE
Type	Recessed Spotlight

Material/Surface finish

Code	004
Material	CRISTALY
Surface finish	CRISTALY

Electrical part

Code	35
Type	GU10 ø35
Power	MAX 20W
Tension	240V
Light Output	-----
Colour Temperature	-----
CRI	-----
Light Output of the lamp	
Dimmable	SI
Power Supply	Tension
Connection	2 Silicon cables
Cover	Etched Glass

General Data

Protection Index	IP20-IP44
Isolation Class	II
Weight [Kg]	0,6
Country of production	MADE IN ITALY
Mounting instruction	025.373_9010_REV06

Installation

Multisize system	SI
Position	Wall/Ceiling lighting

Packaging

Type	White die-cut Box
Measures AxBxH	165x165x116mm
Gross Weight [Kg]	0,6647
Master carton	NO
Quantity of articles	
Measures AxBxH	

Technical Data Sheet

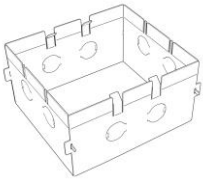
4278-35

Fotometric Data

<i>Electrical part</i>		<i>Illuminance</i>
<i>Power</i>		
<i>Light Output</i>	lm	
<i>Colour Temperature</i>		
<i>CRI</i>		
<i>Lamp Light Output</i>	%	
<i>Light Output of the lamp</i>		
<i>Beam Angle</i>		
<i>Beam Inclination</i>		

Accessories

Housing Box for Brickwork



Code 023.451
Measures 125X125X100mm
Measures of the hole on 155X155X110mm

Other Accessories



Code L007
Description 20-240V
Notes

Code 021.226
Description GU4 Lampholder
Notes