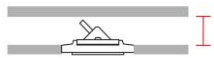
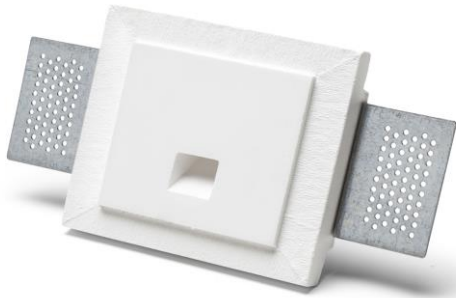


Technical Data Sheet

Last data update

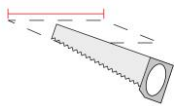
3/15/2016

9010
novantadieci®



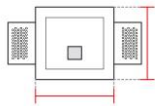
Req. space behind the plasterboard

70mm



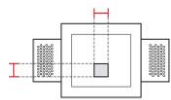
hole on the plasterboard

120x110mm



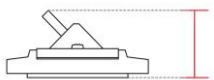
External measures

115x105mm



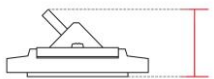
Measures of the light output

20x20mm



Height without electrical part

40mm



Height including the electrical part

65mm

Notes on measures

General notes

PASSO

4202-4000

Recessed Spotlight / CRISTALY

Surface finish : CRISTALY

LED 2W / 24Vdc / 210lm / 4000°K / CRI85

Model

Code	4202
Product family	PASSO
Type	Recessed Spotlight

Material/Surface finish

Code	004
Material	CRISTALY
Surface finish	CRISTALY

Electrical part

Code	4000
Type	LED
Power	2W
Tension	24Vdc
Light Output	210lm
Colour Temperature	4000°K
CRI	85
Light Output of the lamp	100,8lm
Dimmable	SI
Power Supply	by Remote Power Supply
Connection	2 PVC cables
Cover	

General Data

Protection Index	IP20
Isolation Class	III
Weight [Kg]	0,35
Country of production	MADE IN ITALY
Mounting instruction	025.416_9010_REV03

Installation

Multisize system	SI
Position	Wall pathmarker

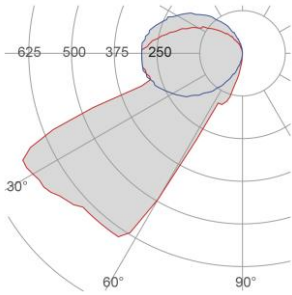
Packaging

Type	White die-cut Box
Measures AxBxH	165x165x116mm
Gross Weight [Kg]	0,4147
Master carton	NO
Quantity of articles	
Measures AxBxH	

Technical Data Sheet

4202-4000

Fotometric Data



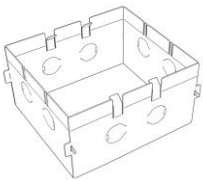
Electrical part 4000_A
Power 2W
Light Output 210lm
Colour Temperature 4000°K
CRI 85

Illuminance 0.3m 801lux
0.5m 288lux
1m 72lux

Lamp Light Output 48%
Light Output of the lamp 100,8lm
Beam Angle 42°
Beam Inclination 50°

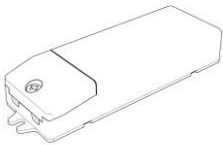
Accessories

Housing Box for Brickwork

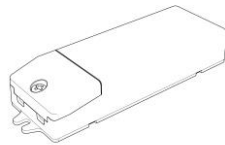


Code 023.411
Measures 105X115X70mm
Measures of the hole on 135X145X80mm

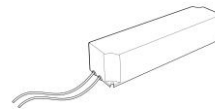
Standard Power Supply



Code 026.258
Measures 130x42x23mm
Power 12W
Input 220-240V~W
Output 24Vdc

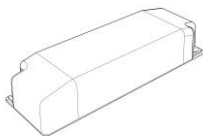


Code 026.259
Measures 167x45x30mm
Power 36W
Input 220-240V~W
Output 24Vdc

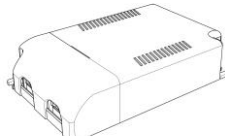


Code 026.260
Measures 157x54x36mm
Power 60W
Input 220-240V~W
Output 24Vdc

Dimmable Power Supply



Code 026.219
Measures 155x51x26mm
Power 21,6W
Input 220-240V~W
Output 24Vdc
Dimmable PUSH/0-10V/DALI



Code 026.209
Measures 125x82x29mm
Power 60W
Input 220-240 V~W
Output 24Vdc
Dimmable PUSH/1-10V

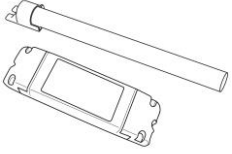
Technical Data Sheet

4202-4000

9010
novantadieci®

Accessories

Other Accessories



<i>Code</i>	099.142
<i>Description</i>	Emergency Kit
<i>Notes</i>	