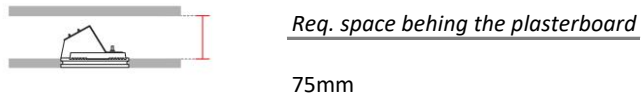


Technical Data Sheet

Last data update

3/15/2016

9010
novantadieci®



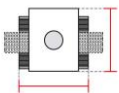
Req. space behind the plasterboard

75mm



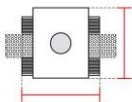
hole on the plasterboard

85x105mm



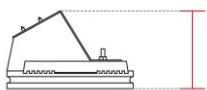
External measures

115x100mm



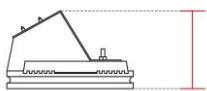
Measures of the light output

ø30mm



Height without electrical part

65mm



Height including the electrical part

65mm

Notes on measures

General notes

PASSO

4099-3000

Recessed Spotlight / CRISTALY

Surface finish : CRISTALY

LED 2W / 24Vdc / 200lm / 3000°K / CRI85

Model

Code	4099
Product family	PASSO
Type	Recessed Spotlight

Material/Surface finish

Code	004
Material	CRISTALY
Surface finish	CRISTALY

Electrical part

Code	3000
Type	LED
Power	2W
Tension	24Vdc
Light Output	200lm
Colour Temperature	3000°K
CRI	85
Light Output of the lamp	64lm
Dimmable	SI
Power Supply	by Remote Power Supply
Connection	2 PVC cables
Cover	

General Data

Protection Index	IP20
Isolation Class	III
Weight [Kg]	0,5
Country of production	MADE IN ITALY
Mounting instruction	025.316_9010_REV06

Installation

Multisize system	NO
Position	Wall pathmarker

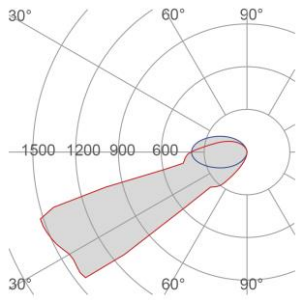
Packaging

Type	White die-cut Box
Measures AxBxH	195x145x115mm
Gross Weight [Kg]	0,5667
Master carton	NO
Quantity of articles	
Measures AxBxH	

Technical Data Sheet

4099-3000

Fotometric Data



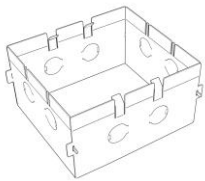
Electrical part 3000_C
Power 2W
Light Output 200lm
Colour Temperature 3000°K
CRI 85

Illuminance 0.3m 1084lux
0.5m 390lux
1m 98lux

Lamp Light Output 32%
Light Output of the lamp 64lm
Beam Angle 28°
Beam Inclination 63°

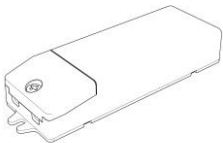
Accessories

Housing Box for Brickwork

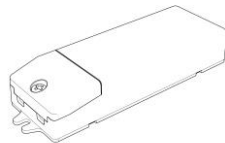


Code 023.411
Measures 105X115X70mm
Measures of the hole on 135X145X80mm

Standard Power Supply



Code 026.258
Measures 130x42x23mm
Power 12W
Input 220-240V~W
Output 24Vdc

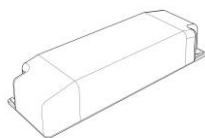


Code 026.259
Measures 167x45x30mm
Power 36W
Input 220-240V~W
Output 24Vdc

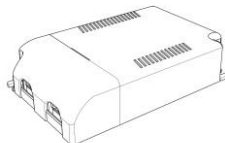


Code 026.260
Measures 157x54x36mm
Power 60W
Input 220-240V~W
Output 24Vdc

Dimmable Power Supply



Code 026.219
Measures 155x51x26mm
Power 21,6W
Input 220-240V~W
Output 24Vdc
Dimmable PUSH/0-10V/DALI



Code 026.209
Measures 125x82x29mm
Power 60W
Input 220-240 V~W
Output 24Vdc
Dimmable PUSH/1-10V

Accessories

Other Accessories



<i>Code</i>	099.142
<i>Description</i>	Emergency Kit
<i>Notes</i>	