



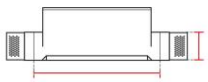
Req. space behind the plasterboard

30mm



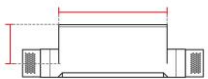
hole on the plasterboard

325x65mm



External measures

320x60mm



Measures of the wall lamp

240x70mm



Height without electrical part

25mm



Protrusion

50mm



General notes

INCASSO DA PARETE

2461-3005

Recessed Wall lamp / CRISTALY

Surface finish : CRISTALY

LED 6.5W / 24Vdc / 560lm / 3000°K / CRI85

Model

Code	2461
Product family	INCASSO DA PARETE
Type	Recessed Wall lamp

Material/Surface finish

Code	004
Material	CRISTALY
Surface finish	CRISTALY

Electrical part

Code	3005
Type	LED
Power	6.5W
Tension	24Vdc
Light Output	560lm
Colour Temperature	3000°K
CRI	85

Light Output of the lamp	560lm
Dimmable	SI

Power Supply	by Remote Power Supply
Connection	Screw Terminal
Cover	Transparent Polycarbonate

General Data

Protection Index	IP20
Isolation Class	III
Weight [Kg]	0,95
Country of production	MADE IN ITALY
Mounting instruction	025.380_9010_REV05

Installation

Multisize system	SI
Position	Wall Lamp

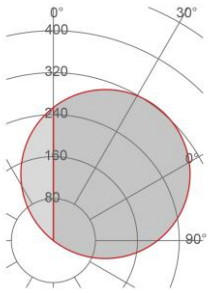
Packaging

Type	White american Box
Measures AxBxH	435x170x135mm
Gross Weight [Kg]	1,1547
Master carton	NO
Quantity of articles	
Measures AxBxH	

Technical Data Sheet

2461-3005

Fotometric Data



<i>Electrical part</i>	3005_6,5
<i>Power</i>	6.5W
<i>Light Output</i>	560lm
<i>Colour Temperature</i>	3000°K
<i>CRI</i>	85
<i>Lamp Light Output</i>	100%
<i>Light Output of the lamp</i>	560lm
<i>Beam Angle</i>	120°
<i>Beam Inclination</i>	38°

Illuminance

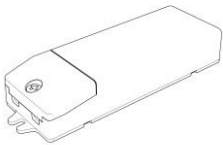
Accessories

Housing Box for Brickwork

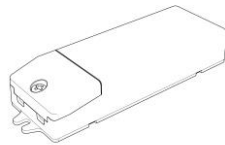


Code 023.441
Measures 325X65X50mm
Measures of the hole on 355X95X60mm

Standard Power Supply



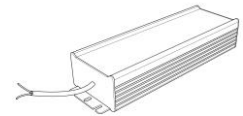
Code 026.258
Measures 130x42x23mm
Power 12W
Input 220-240V~W
Output 24Vdc



Code 026.259
Measures 167x45x30mm
Power 36W
Input 220-240V~W
Output 24Vdc



Code 026.260
Measures 157x54x36mm
Power 60W
Input 220-240V~W
Output 24Vdc



Code 026.261
Measures 219x63x35.5mm
Power 150W
Input 180-295V~W
Output 24Vdc

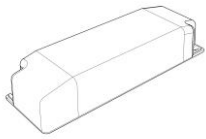


Code 026.262
Measures 244x71x35.5mm
Power 240W
Input 180-295V~W
Output 24Vdc

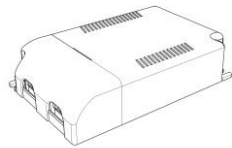
2461-3005

Accessories

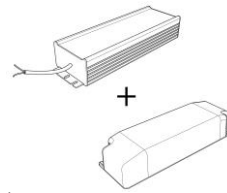
Dimmable Power Supply



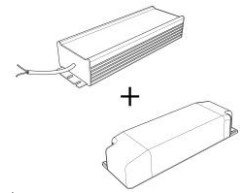
Code 026.219
Measures 155x51x26mm
Power 21,6W
Input 220-240V~W
Output 24Vdc
Dimmable PUSH/0-10V/DALI



Code 026.209
Measures 125x82x29mm
Power 60W
Input 220-240 V~W
Output 24Vdc
Dimmable PUSH/1-10V

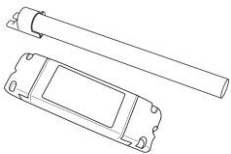


Code 026.190+026.261
Measures 156x52x24mm
Power 150W
Input 180-295V~W
Output 24Vdc
Dimmable PUSH/0-10V/DALI



Code 026.190+026.262
Measures 156x52x24mm
Power 240W
Input 180-295V~W
Output 24Vdc
Dimmable PUSH/0-10V/DALI

Other Accessories



Code 099.142
Description Emergency Kit
Notes