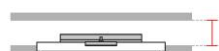


Technical Data Sheet

Last data update

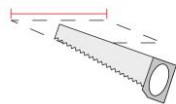
7/19/2016

9010
novantadieci®



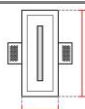
Req. space behind the plasterboard

40mm



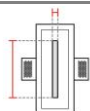
hole on the plasterboard

110x250mm



External measures

107x247mm



Measures of the light output

15x155mm



Height without electrical part

35mm



Height including the electrical part

35mm

Notes on measures

General notes

PASSO

4130C-4003

Recessed Spotlight / CRISTALY

Surface finish : CRISTALY

LED 4W / 24Vdc / 470lm / 4000°K / CRI85

Model

Code	4130C
Product family	PASSO
Type	Recessed Spotlight

Material/Surface finish

Code	004
Material	CRISTALY
Surface finish	CRISTALY

Electrical part

Code	4003
Type	LED
Power	4W
Tension	24Vdc
Light Output	470lm
Colour Temperature	4000°K
CRI	85
Light Output of the lamp	305,5lm
Dimmable	SI
Power Supply	by Remote Power Supply
Connection	2 PVC cables
Cover	Opal Polycarbonate

General Data

Protection Index	IP20
Isolation Class	III
Weight [Kg]	0,95
Country of production	MADE IN ITALY
Mounting instruction	025.571_9010

Installation

Multisize system	SI
Position	Wall pathmarker

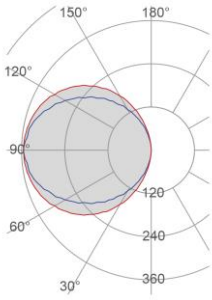
Packaging

Type	White american Box
Measures AxBxH	339x176x81mm
Gross Weight [Kg]	1,0491
Master carton	NO
Quantity of articles	
Measures AxBxH	

Technical Data Sheet

4130C-4003

Fotometric Data



<i>Electrical part</i>	4003_4
<i>Power</i>	4W
<i>Light Output</i>	470lm
<i>Colour Temperature</i>	4000°K
<i>CRI</i>	85
<i>Lamp Light Output</i>	65%
<i>Light Output of the lamp</i>	305,5lm
<i>Beam Angle</i>	119°
<i>Beam Inclination</i>	0°

Illuminance

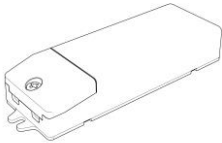
Accessories

Housing Box for Brickwork

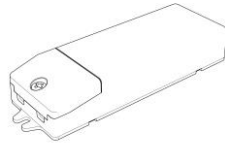


Code 023.4102
Measures 110X250X50mm
Measures of the hole on 140X280X60mm

Standard Power Supply



Code 026.258
Measures 130x42x23mm
Power 12W
Input 220-240V~W
Output 24Vdc

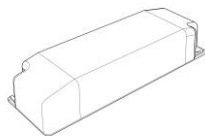


Code 026.259
Measures 167x45x30mm
Power 36W
Input 220-240V~W
Output 24Vdc

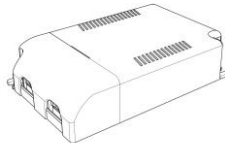


Code 026.260
Measures 157x54x36mm
Power 60W
Input 220-240V~W
Output 24Vdc

Dimmable Power Supply



Code 026.219
Measures 155x51x26mm
Power 21,6W
Input 220-240V~W
Output 24Vdc
Dimmable PUSH/0-10V/DALI



Code 026.209
Measures 125x82x29mm
Power 60W
Input 220-240 V~W
Output 24Vdc
Dimmable PUSH/1-10V

Technical Data Sheet

4130C-4003

9010
novantadieci®

Accessories

Other Accessories



<i>Code</i>	099.142
<i>Description</i>	Emergency Kit
<i>Notes</i>	