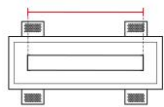
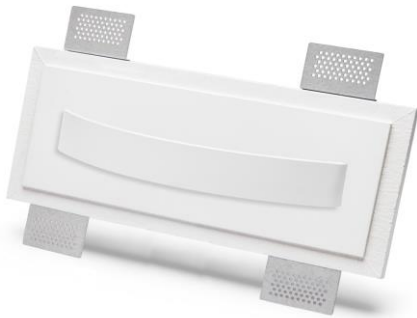


# Technical Data Sheet

Last data update

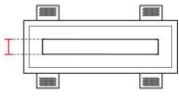
8/5/2017

9010  
novantadieci®



*Base*

300mm



*Height*

40mm



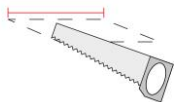
*Depth*

60mm



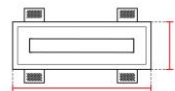
*Req. space behind the plasterboard*

50mm



*hole on the plasterboard*

405x145mm



*External measures*

400x140mm



**General notes**

## INCASSO DA PARETE

2486A-2703

Recessed Wall lamp / CRISTALY + ALUMITE

Surface finish : CRISTALY

LED 8W / 24Vdc / 850lm / 2700°K / CRI85

### Model

Code	2486A
Product family	INCASSO DA PARETE
Type	Recessed Wall lamp

### Material/Surface finish

Code	004
Material	CRISTALY + ALUMITE
Surface finish	CRISTALY

### Electrical part

Code	2703
Type	LED
Power	8W
Tension	24Vdc
Light Output	850lm
Colour Temperature	2700°K
CRI	85
Light Output of the lamp	595lm
Dimmable	SI
Power Supply	by Remote Power Supply
Connection	Screw Terminal
Cover	

### General Data

Protection Index	IP20
Isolation Class	III
Weight [Kg]	2,4
Country of production	MADE IN ITALY
Mounting instruction	025.585_9010

### Installation

Multisize system	SI
Position	Wall Lamp

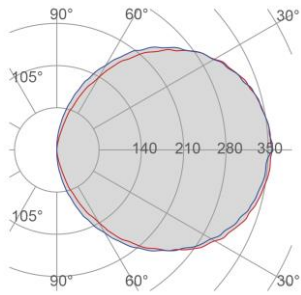
### Packaging

Type	White american Box
Measures AxBxH	450x310x205mm
Gross Weight [Kg]	2,9862
Master carton	NO
Quantity of articles	
Measures AxBxH	

# Technical Data Sheet

2486A-2703

## Fotometric Data



<i>Electrical part</i>	2703_8
<i>Power</i>	8W
<i>Light Output</i>	850lm
<i>Colour Temperature</i>	2700°K
<i>CRI</i>	85
<i>Lamp Light Output</i>	70%
<i>Light Output of the lamp</i>	595lm
<i>Beam Angle</i>	115°
<i>Beam Inclination</i>	

### Illuminance

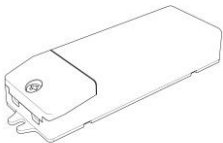
## Accessories

### Housing Box for Brickwork

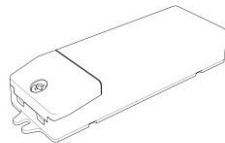


*Code* 023.4003  
*Measures* 405X145X80mm  
*Measures of the hole on* 435X175X90mm

## Standard Power Supply



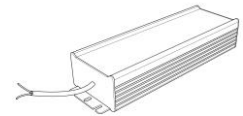
*Code* 026.258  
*Measures* 130x42x23mm  
*Power* 12W  
*Input* 220-240V~W  
*Output* 24Vdc



*Code* 026.259  
*Measures* 167x45x30mm  
*Power* 36W  
*Input* 220-240V~W  
*Output* 24Vdc



*Code* 026.260  
*Measures* 157x54x36mm  
*Power* 60W  
*Input* 220-240V~W  
*Output* 24Vdc



*Code* 026.261  
*Measures* 219x63x35.5mm  
*Power* 150W  
*Input* 180-295V~W  
*Output* 24Vdc



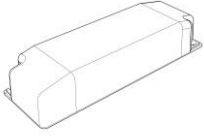
*Code* 026.262  
*Measures* 244x71x35.5mm  
*Power* 240W  
*Input* 180-295V~W  
*Output* 24Vdc

# Technical Data Sheet

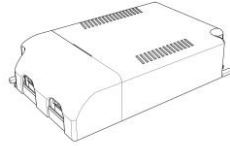
2486A-2703

## Accessories

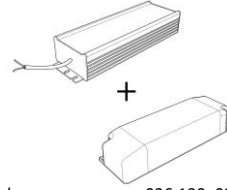
### Dimmable Power Supply



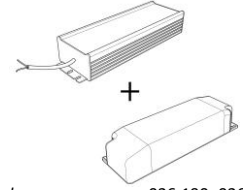
*Code* 026.219  
*Measures* 155x51x26mm  
*Power* 21,6W  
*Input* 220-240V~W  
*Output* 24Vdc  
*Dimmable* PUSH/0-10V/DALI



*Code* 026.209  
*Measures* 125x82x29mm  
*Power* 60W  
*Input* 220-240 V~W  
*Output* 24Vdc  
*Dimmable* PUSH/1-10V

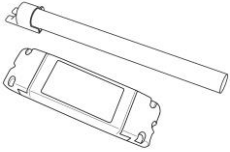


*Code* 026.190+026.261  
*Measures* 156x52x24mm  
*Power* 150W  
*Input* 180-295V~W  
*Output* 24Vdc  
*Dimmable* PUSH/0-10V/DALI



*Code* 026.190+026.262  
*Measures* 156x52x24mm  
*Power* 240W  
*Input* 180-295V~W  
*Output* 24Vdc  
*Dimmable* PUSH/0-10V/DALI

### Other Accessories



*Code* 099.142  
*Description* Emergency Kit  
*Notes*