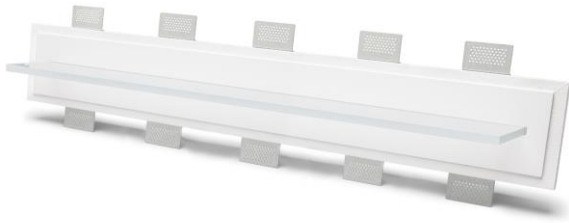


# Technical Data Sheet

Last data update

8/5/2017

9010  
novantadieci®



|  |   |
|--|---|
|  | <b>Base</b>                               |
|  | 900mm                                     |
|  | <b>Height</b>                             |
|  | 12mm                                      |
|  | <b>Depth</b>                              |
|  | 100mm                                     |
|  | <b>Req. space behind the plasterboard</b> |
|  | 50mm                                      |
|  | <b>hole on the plasterboard</b>           |
|  | 1005x145mm                                |
|  | <b>External measures</b>                  |
|  | 1000x140mm                                |
|  |   |

## General notes

## INCASSO DA PARETE

2484C-3004

Recessed Wall lamp / CRISTALY

Surface finish : CRISTALY

LED 19W / 24Vdc / 1700lm / 3000°K / CRI85

### Model

|                |                    |
|----------------|--------------------|
| Code           | 2484C              |
| Product family | INCASSO DA PARETE  |
| Type           | Recessed Wall lamp |

### Material/Surface finish

|                |          |
|----------------|----------|
| Code           | 004      |
| Material       | CRISTALY |
| Surface finish | CRISTALY |

### Electrical part

|                          |                        |
|--------------------------|------------------------|
| Code                     | 3004                   |
| Type                     | LED                    |
| Power                    | 19W                    |
| Tension                  | 24Vdc                  |
| Light Output             | 1700lm                 |
| Colour Temperature       | 3000°K                 |
| CRI                      | 85                     |
| Light Output of the lamp | 782lm                  |
| Dimmable                 | SI                     |
| Power Supply             | by Remote Power Supply |
| Connection               | 2 PVC cables           |
| Cover                    |                        |

### General Data

|                       |               |
|-----------------------|---------------|
| Protection Index      | IP20          |
| Isolation Class       | III           |
| Weight [Kg]           | 9,5           |
| Country of production | MADE IN ITALY |
| Mounting instruction  | 025.581_9010  |

### Installation

|                  |           |
|------------------|-----------|
| Multisize system | SI        |
| Position         | Wall Lamp |

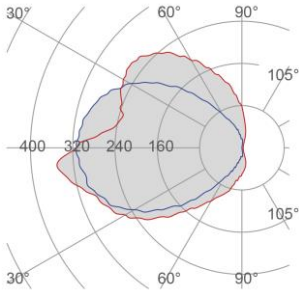
### Packaging

|                      |                    |
|----------------------|--------------------|
| Type                 | White american Box |
| Measures AxBxH       | 1090x240x210mm     |
| Gross Weight [Kg]    | 10,626             |
| Master carton        | NO                 |
| Quantity of articles |                    |
| Measures AxBxH       |                    |

# Technical Data Sheet

2484C-3004

## Fotometric Data

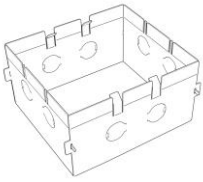


|                                 |         |
|---------------------------------|---------|
| <i>Electrical part</i>          | 3004_19 |
| <i>Power</i>                    | 19W     |
| <i>Light Output</i>             | 1700lm  |
| <i>Colour Temperature</i>       | 3000°K  |
| <i>CRI</i>                      | 85      |
| <br>                            |         |
| <i>Lamp Light Output</i>        | 46%     |
| <i>Light Output of the lamp</i> | 782lm   |
| <i>Beam Angle</i>               | \       |
| <i>Beam Inclination</i>         |         |

## Illuminance

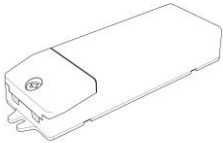
## Accessories

### Housing Box for Brickwork



|                                |               |
|--------------------------------|---------------|
| <i>Code</i>                    | 023.4006      |
| <i>Measures</i>                | 1005X145X65mm |
| <i>Measures of the hole on</i> | 1035X175X75mm |

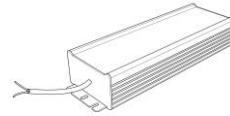
## Standard Power Supply



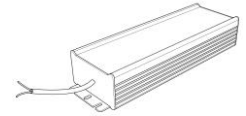
|                 |             |
|-----------------|-------------|
| <i>Code</i>     | 026.259     |
| <i>Measures</i> | 167x45x30mm |
| <i>Power</i>    | 36W         |
| <i>Input</i>    | 220-240V~W  |
| <i>Output</i>   | 24Vdc       |



|                 |             |
|-----------------|-------------|
| <i>Code</i>     | 026.260     |
| <i>Measures</i> | 157x54x36mm |
| <i>Power</i>    | 60W         |
| <i>Input</i>    | 220-240V~W  |
| <i>Output</i>   | 24Vdc       |

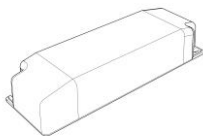


|                 |               |
|-----------------|---------------|
| <i>Code</i>     | 026.261       |
| <i>Measures</i> | 219x63x35.5mm |
| <i>Power</i>    | 150W          |
| <i>Input</i>    | 180-295V~W    |
| <i>Output</i>   | 24Vdc         |

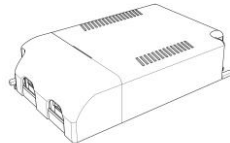


|                 |               |
|-----------------|---------------|
| <i>Code</i>     | 026.262       |
| <i>Measures</i> | 244x71x35.5mm |
| <i>Power</i>    | 240W          |
| <i>Input</i>    | 180-295V~W    |
| <i>Output</i>   | 24Vdc         |

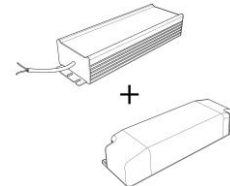
## Dimmable Power Supply



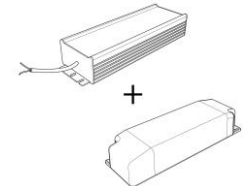
|                 |                 |
|-----------------|-----------------|
| <i>Code</i>     | 026.219         |
| <i>Measures</i> | 155x51x26mm     |
| <i>Power</i>    | 21,6W           |
| <i>Input</i>    | 220-240V~W      |
| <i>Output</i>   | 24Vdc           |
| <i>Dimmable</i> | PUSH/0-10V/DALI |



|                 |             |
|-----------------|-------------|
| <i>Code</i>     | 026.209     |
| <i>Measures</i> | 125x82x29mm |
| <i>Power</i>    | 60W         |
| <i>Input</i>    | 220-240 V~W |
| <i>Output</i>   | 24Vdc       |
| <i>Dimmable</i> | PUSH/1-10V  |



|                 |                 |
|-----------------|-----------------|
| <i>Code</i>     | 026.190+026.261 |
| <i>Measures</i> | 156x52x24mm     |
| <i>Power</i>    | 150W            |
| <i>Input</i>    | 180-295V~W      |
| <i>Output</i>   | 24Vdc           |
| <i>Dimmable</i> | PUSH/0-10V/DALI |



|                 |                 |
|-----------------|-----------------|
| <i>Code</i>     | 026.190+026.262 |
| <i>Measures</i> | 156x52x24mm     |
| <i>Power</i>    | 240W            |
| <i>Input</i>    | 180-295V~W      |
| <i>Output</i>   | 24Vdc           |
| <i>Dimmable</i> | PUSH/0-10V/DALI |

# Technical Data Sheet

2484C-3004

9010  
novantadieci®

---

## Accessories

---

### Other Accessories

---



|                    |               |
|--------------------|---------------|
| <i>Code</i>        | 099.142       |
| <i>Description</i> | Emergency Kit |
| <i>Notes</i>       |               |