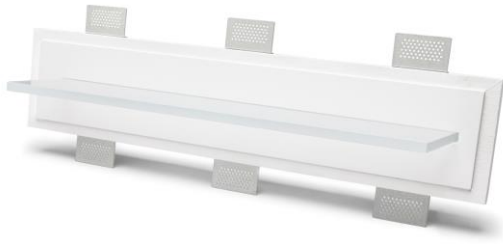


Technical Data Sheet

Last data update

8/5/2017

9010
novantadieci®



Base

600mm



Height

12mm



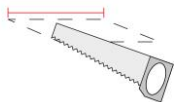
Depth

100mm



Req. space behind the plasterboard

50mm



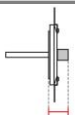
hole on the plasterboard

705x145mm



External measures

700x140mm



General notes

INCASSO DA PARETE

2484B-4004

Recessed Wall lamp / CRISTALY

Surface finish : CRISTALY

LED 12W / 24Vdc / 1150lm / 4000°K / CRI85

Model

Code	2484B
Product family	INCASSO DA PARETE
Type	Recessed Wall lamp

Material/Surface finish

Code	004
Material	CRISTALY
Surface finish	CRISTALY

Electrical part

Code	4004
Type	LED
Power	12W
Tension	24Vdc
Light Output	1150lm
Colour Temperature	4000°K
CRI	85
Light Output of the lamp	529lm
Dimmable	SI
Power Supply	by Remote Power Supply
Connection	2 PVC cables
Cover	

General Data

Protection Index	IP20
Isolation Class	III
Weight [Kg]	6,5
Country of production	MADE IN ITALY
Mounting instruction	025.581_9010

Installation

Multisize system	SI
Position	Wall Lamp

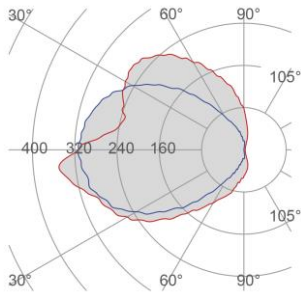
Packaging

Type	White american Box
Measures AxBxH	760x240x210mm
Gross Weight [Kg]	7,2852
Master carton	NO
Quantity of articles	
Measures AxBxH	

Technical Data Sheet

2484B-4004

Fotometric Data



<i>Electrical part</i>	4004_12
<i>Power</i>	12W
<i>Light Output</i>	1150lm
<i>Colour Temperature</i>	4000°K
<i>CRI</i>	85
<i>Lamp Light Output</i>	46%
<i>Light Output of the lamp</i>	529lm
<i>Beam Angle</i>	\
<i>Beam Inclination</i>	

Illuminance

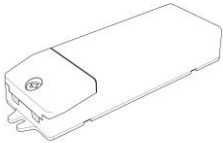
Accessories

Housing Box for Brickwork



Code 023.4005
Measures 705X145X80mm
Measures of the hole on 735X175X90mm

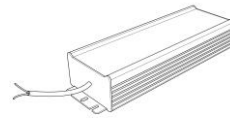
Standard Power Supply



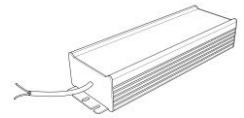
Code 026.259
Measures 167x45x30mm
Power 36W
Input 220-240V~W
Output 24Vdc



Code 026.260
Measures 157x54x36mm
Power 60W
Input 220-240V~W
Output 24Vdc

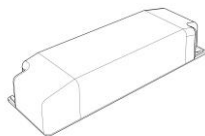


Code 026.261
Measures 219x63x35.5mm
Power 150W
Input 180-295V~W
Output 24Vdc

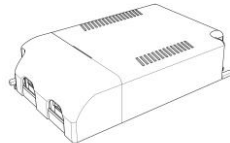


Code 026.262
Measures 244x71x35.5mm
Power 240W
Input 180-295V~W
Output 24Vdc

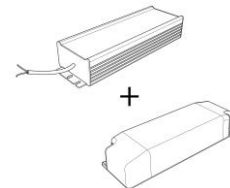
Dimmable Power Supply



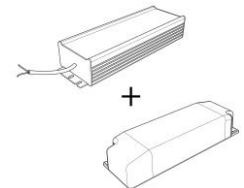
Code 026.219
Measures 155x51x26mm
Power 21,6W
Input 220-240V~W
Output 24Vdc
Dimmable PUSH/0-10V/DALI



Code 026.209
Measures 125x82x29mm
Power 60W
Input 220-240 V~W
Output 24Vdc
Dimmable PUSH/1-10V



Code 026.190+026.261
Measures 156x52x24mm
Power 150W
Input 180-295V~W
Output 24Vdc
Dimmable PUSH/0-10V/DALI



Code 026.190+026.262
Measures 156x52x24mm
Power 240W
Input 180-295V~W
Output 24Vdc
Dimmable PUSH/0-10V/DALI

Accessories

Other Accessories



<i>Code</i>	099.142
<i>Description</i>	Emergency Kit
<i>Notes</i>	