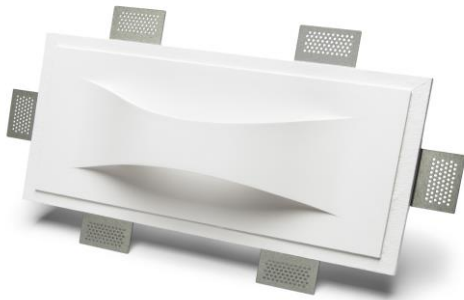


Technical Data Sheet

Last data update

3/15/2016

9010
novantadieci®



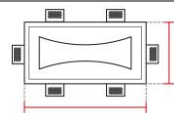
Req. space behind the plasterboard

65mm



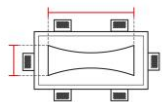
hole on the plasterboard

405x205mm



External measures

400x200mm



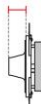
Measures of the wall lamp

300x105mm



Height without electrical part

25mm



Protrusion

55mm



General notes

INCASSO DA PARETE

2619-4008

Recessed Wall lamp / CRISTALY

Surface finish : CRISTALY

LED 2x13W / 700mA / 3350lm / 4000°K / CRI85

Model

Code	2619
Product family	INCASSO DA PARETE
Type	Recessed Wall lamp

Material/Surface finish

Code	004
Material	CRISTALY
Surface finish	CRISTALY

Electrical part

Code	4008
Type	LED
Power	2x13W
Current	700mA
Light Output	3350lm
Colour Temperature	4000°K
CRI	85
Light Output of the lamp	2512,5lm
Dimmable	SI
Power Supply	by Remote Power Supply
Connection	2 PVC cables
Cover	Etched Glass

General Data

Protection Index	IP20
Isolation Class	III
Weight [Kg]	2,9
Country of production	MADE IN ITALY
Mounting instruction	025.482_9010_REV03

Installation

Multisize system	SI
Position	Wall Lamp

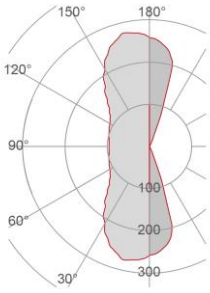
Packaging

Type	White american Box
Measures AxBxH	450x310x205mm
Gross Weight [Kg]	3,4862
Master carton	NO
Quantity of articles	
Measures AxBxH	

Technical Data Sheet

2619-4008

Fotometric Data

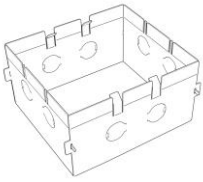


<i>Electrical part</i>	4008_x2
<i>Power</i>	2x13W
<i>Light Output</i>	3350lm
<i>Colour Temperature</i>	4000°K
<i>CRI</i>	85
<i>Lamp Light Output</i>	75%
<i>Light Output of the lamp</i>	2512,5lm
<i>Beam Angle</i>	45°\45°
<i>Beam Inclination</i>	\

Illuminance

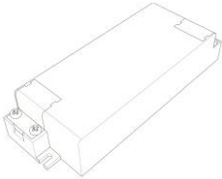
Accessories

Housing Box for Brickwork



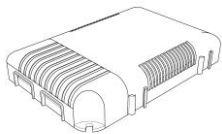
<i>Code</i>	023.491
<i>Measures</i>	205X405X75mm
<i>Measures of the hole on</i>	235X435X85mm

Standard Power Supply

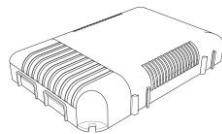


<i>Code</i>	026.256
<i>Measures</i>	118x42,5x24mm
<i>Power</i>	min25,2W max35,7W
<i>Input</i>	220-240V~W
<i>Output</i>	700mA

Dimmable Power Supply



<i>Code</i>	026.206
<i>Measures</i>	124x82x23mm
<i>Power</i>	60,2W
<i>Input</i>	180-295V~W
<i>Output</i>	700mA
<i>Dimmable</i>	PUSH/DALI



<i>Code</i>	026.207
<i>Measures</i>	124x82x23mm
<i>Power</i>	60,2W
<i>Input</i>	180-295V~W
<i>Output</i>	700mA
<i>Dimmable</i>	0-10V

Accessories

Other Accessories



<i>Code</i>	099.142
<i>Description</i>	Emergency Kit
<i>Notes</i>	