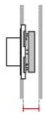
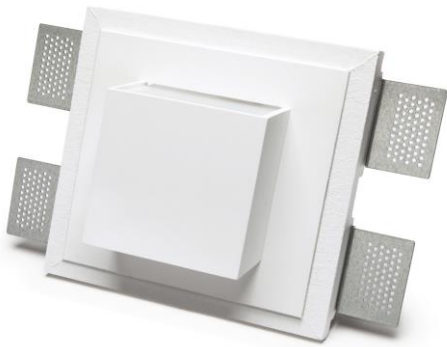


# Technical Data Sheet

Last data update

3/15/2016

9010  
novantadieci®



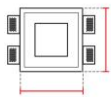
*Req. space behind the plasterboard*

65mm



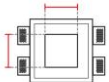
*hole on the plasterboard*

220x220mm



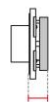
*External measures*

215x215mm



*Measures of the wall lamp*

110x110mm



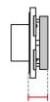
*Height without electrical part*

25mm



*Protrusion*

55mm



**General notes**

## INCASSO DA PARETE

2618-3008

Recessed Wall lamp / CRISTALY

Surface finish : CRISTALY

LED 2x13W / 700mA / 3200lm / 3000°K / CRI85

### Model

Code	2618
Product family	INCASSO DA PARETE
Type	Recessed Wall lamp

### Material/Surface finish

Code	004
Material	CRISTALY
Surface finish	CRISTALY

### Electrical part

Code	3008
Type	LED
Power	2x13W
Current	700mA
Light Output	3200lm
Colour Temperature	3000°K
CRI	85
Light Output of the lamp	2240lm
Dimmable	SI
Power Supply	by Remote Power Supply
Connection	2 PVC cables
Cover	Etched Glass

### General Data

Protection Index	IP20
Isolation Class	III
Weight [Kg]	2,4
Country of production	MADE IN ITALY
Mounting instruction	025.482_9010_REV03

### Installation

Multisize system	SI
Position	Wall Lamp

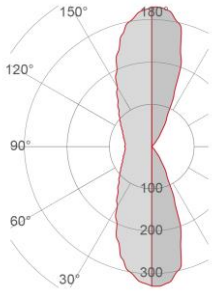
### Packaging

Type	White american Box
Measures AxBxH	340x260x187mm
Gross Weight [Kg]	2,7389
Master carton	NO
Quantity of articles	
Measures AxBxH	

# Technical Data Sheet

2618-3008

## Fotometric Data



<i>Electrical part</i>	3008_x2
<i>Power</i>	2x13W
<i>Light Output</i>	3200lm
<i>Colour Temperature</i>	3000°K
<i>CRI</i>	85
<i>Lamp Light Output</i>	70%
<i>Light Output of the lamp</i>	2240lm
<i>Beam Angle</i>	30°\30°
<i>Beam Inclination</i>	\

*Illuminance*

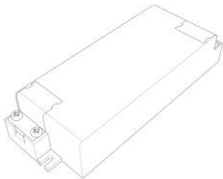
## Accessories

### Housing Box for Brickwork



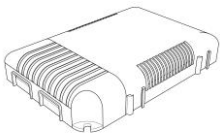
<i>Code</i>	023.495
<i>Measures</i>	220X220X75mm
<i>Measures of the hole on</i>	250X250X85mm

### Standard Power Supply

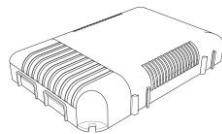


<i>Code</i>	026.256
<i>Measures</i>	118x42,5x24mm
<i>Power</i>	min25,2W max35,7W
<i>Input</i>	220-240V~W
<i>Output</i>	700mA

### Dimmable Power Supply



<i>Code</i>	026.206
<i>Measures</i>	124x82x23mm
<i>Power</i>	60,2W
<i>Input</i>	180-295V~W
<i>Output</i>	700mA
<i>Dimmable</i>	PUSH/DALI



<i>Code</i>	026.207
<i>Measures</i>	124x82x23mm
<i>Power</i>	60,2W
<i>Input</i>	180-295V~W
<i>Output</i>	700mA
<i>Dimmable</i>	0-10V

2618-3008

---

## Accessories

---

### *Other Accessories*

---



<i>Code</i>	099.142
<i>Description</i>	Emergency Kit
<i>Notes</i>	