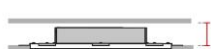
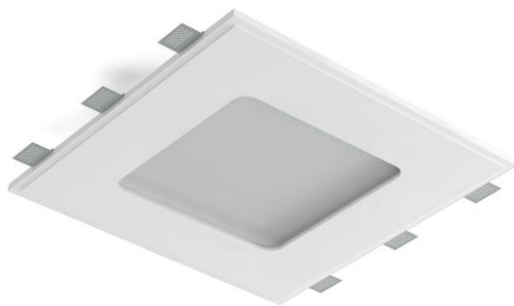


Technical Data Sheet

Last data update

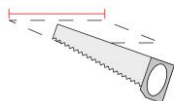
3/15/2016

9010
novantadieci®



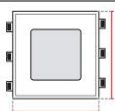
Req. space behind the plasterboard

90(120*)mm



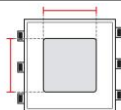
hole on the plasterboard

505x505mm



External measures

500x500mm



Measures of the light output

300x300mm



Height without electrical part

25mm



Height including the electrical part

85mm

Notes on measures

General notes

INCASSO A PLAFONE

8937A-4028

Recessed lighting / CRISTALY

Surface finish : CRISTALY

LED 25W / 700mA / 3760lm / 4000°K / CRI85

Model

Code	8937A
Product family	INCASSO A PLAFONE
Type	Recessed lighting

Material/Surface finish

Code	004
Material	CRISTALY
Surface finish	CRISTALY

Electrical part

Code	4028
Type	LED
Power	25W
Current	700mA
Light Output	3760lm
Colour Temperature	4000°K
CRI	85
Light Output of the lamp	2556,8lm
Dimmable	SI
Power Supply	Power Supply in counterceiling
Connection	2 PVC cables
Cover	Etched Glass

General Data

Protection Index	IP20-IP44
Isolation Class	III
Weight [Kg]	6,5
Country of production	MADE IN ITALY
Mounting instruction	025.503_9010_REV03

Installation

Multisize system	SI
Position	Ceiling

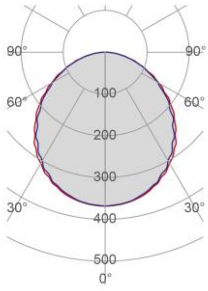
Packaging

Type	White american Box
Measures AxBxH	610x610x240mm
Gross Weight [Kg]	8,3307
Master carton	NO
Quantity of articles	
Measures AxBxH	

Technical Data Sheet

8937A-4028

Fotometric Data

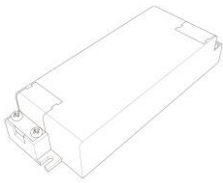


<i>Electrical part</i>	4028
<i>Power</i>	25W
<i>Light Output</i>	3760lm
<i>Colour Temperature</i>	4000°K
<i>CRI</i>	85
<i>Lamp Light Output</i>	68%
<i>Light Output of the lamp</i>	2556,8lm
<i>Beam Angle</i>	109°
<i>Beam Inclination</i>	0°

<i>Illuminance</i>	1m	941lux
	2m	235lux
	3m	105lux
	4m	59lux
	5m	38lux

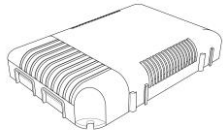
Accessories

Standard Power Supply

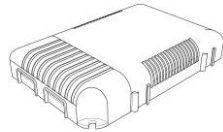


<i>Code</i>	026.256
<i>Measures</i>	118x42,5x24mm
<i>Power</i>	min25,2W max35,7W
<i>Input</i>	220-240V~W
<i>Output</i>	700mA

Dimmable Power Supply

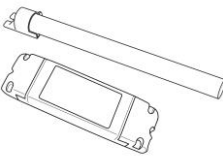


<i>Code</i>	026.206
<i>Measures</i>	124x82x23mm
<i>Power</i>	60,2W
<i>Input</i>	180-295V~W
<i>Output</i>	700mA
<i>Dimmable</i>	PUSH/DALI



<i>Code</i>	026.207
<i>Measures</i>	124x82x23mm
<i>Power</i>	60,2W
<i>Input</i>	180-295V~W
<i>Output</i>	700mA
<i>Dimmable</i>	0-10V

Other Accessories



<i>Code</i>	099.142
<i>Description</i>	Emergency Kit
<i>Notes</i>	