

Technical Data Sheet

Last data update

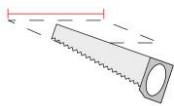
3/15/2016

9010
novantadieci®



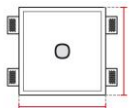
Req. space behind the plasterboard

30mm



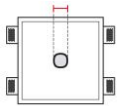
hole on the plasterboard

310x310mm



External measures

305x305mm



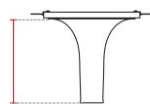
Measures of the light output

Ø50x-----mm



Height without electrical part

25mm



Protrusion

260mm



General notes

INCASSO A PLAFONE

8935I-35

Recessed Spotlight / CRISTALY

Surface finish : CRISTALY

GU10 Ø50 MAX 10W / 240V

Model

Code	8935I
Product family	INCASSO A PLAFONE
Type	Recessed Spotlight

Material/Surface finish

Code	004
Material	CRISTALY
Surface finish	CRISTALY

Electrical part

Code	35
Type	GU10 Ø50
Power	MAX 10W
Tension	240V
Light Output	-----
Colour Temperature	-----
CRI	-----
Light Output of the lamp	
Dimmable	NO
Power Supply	Tension
Connection	2 Silicon cables
Cover	

General Data

Protection Index	IP20
Isolation Class	II
Weight [Kg]	2,7
Country of production	MADE IN ITALY
Mounting instruction	025.373_9010_REV06

Installation

Multisize system	SI
Position	Ceiling

Packaging

Type	White american Box
Measures AxBxH	380x380x385mm
Gross Weight [Kg]	3,8397
Master carton	NO
Quantity of articles	
Measures AxBxH	

Technical Data Sheet

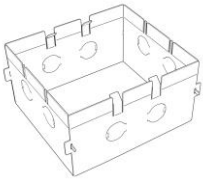
8935I-35

Fotometric Data

Electrical part		Im	illuminance
Power			
Light Output			
Colour Temperature			
CRI			
Lamp Light Output	%		
Light Output of the lamp			
Beam Angle			
Beam Inclination			

Accessories

Housing Box for Brickwork



Code 023.462
Measures 310X310X50mm
Measures of the hole on 340X340X60mm

LED bulbs



Code L001-3018
Power 8W
Tension 220-240V
Flux 650lm
CRI 85
Colour Temperature 3000°K
Beam Angle 60°

Code L002-3020
Power 8W
Tension 220-240V
Flux 650lm
CRI 85
Colour Temperature 3000°K
Beam Angle 30°

Code L003-3022
Power 12W
Tension 220-240V
Flux 1000lm
CRI 85
Colour Temperature 3000°K
Beam Angle 60°

Code L004-3018
Power 12W
Tension 220-240V
Flux 1000lm
CRI 85
Colour Temperature 3000°K
Beam Angle 30°

Other Accessories

Code 021.231
Description GU5.3 Lampholder
Notes