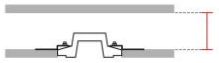
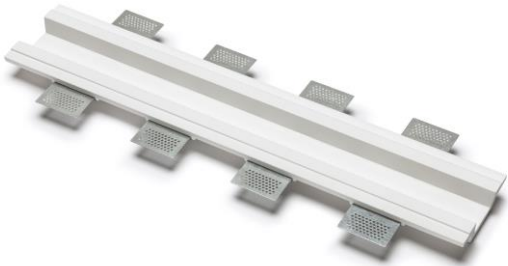


# Technical Data Sheet

Last data update

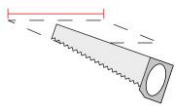
1/17/2017

9010  
novantadieci®



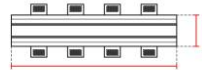
*Req. space behind the plasterboard*

50mm



*hole on the plasterboard*

120x625mm



*External measures*

115x620mm



*Measures of the light output*

50x620mm



*Height without electrical part*

45mm

## Notes on measures

## General notes

## PROFILO

4192I-00

Recessed Profile / CRISTALY

Surface finish : CRISTALY

Senza parte elettrica - Without electrical part - / -

## Model

|                |                  |
|----------------|------------------|
| Code           | 4192I            |
| Product family | PROFILO          |
| Type           | Recessed Profile |

## Material/Surface finish

|                |          |
|----------------|----------|
| Code           | 004      |
| Material       | CRISTALY |
| Surface finish | CRISTALY |

## Electrical part

|      |   |
|------|---|
| Code | 00  |
| Type | Senza parte elettrica - Without electrical part |

## General Data

|                       |               |
|-----------------------|---------------|
| Protection Index      |               |
| Isolation Class       |               |
| Weight [Kg]           | 2,35          |
| Cover                 |               |
| Country of production | MADE IN ITALY |
| Mounting instruction  | 025.584_9010  |

## Installation

|                  |                       |
|------------------|-----------------------|
| Multisize system | SI                    |
| Position         | Wall/Ceiling lighting |

## Packaging

|                      |                    |
|----------------------|--------------------|
| Type                 | White american Box |
| Measures AxBxH       | 760x240x210mm      |
| Gross Weight [Kg]    | 3,1352             |
| Master carton        | NO                 |
| Quantity of articles |                    |
| Measures AxBxH       |                    |

# Technical Data Sheet

4192I-00

9010  
novantadieci®

---

## Fotometric Data

---

| <i>Electrical part</i>          |    | <i>Illuminance</i> |
|---------------------------------|----|--------------------|
| <i>Power</i>                    |    |                    |
| <i>Light Output</i>             | lm |                    |
| <i>Colour Temperature</i>       |    |                    |
| <i>CRI</i>                      |    |                    |
| <i>Lamp Light Output</i>        | %  |                    |
| <i>Light Output of the lamp</i> |    |                    |
| <i>Beam Angle</i>               |    |                    |
| <i>Beam Inclination</i>         |    |                    |

---

## Accessories

---

### *Other Accessories*

---

*Code* 4191T-00  
*Description* End Cap  
*Notes*