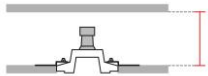
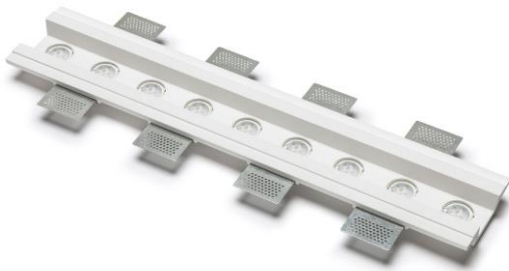


Technical Data Sheet

Last data update

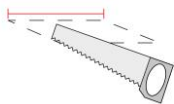
1/17/2017

9010
novantadieci®



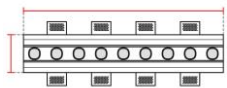
Req. space behind the plasterboard

90mm



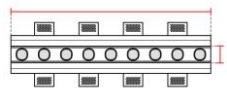
hole on the plasterboard

120x625mm



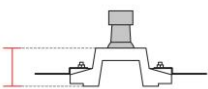
External measures

115x620mm



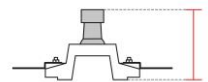
Measures of the light output

50x620mm



Height without electrical part

45mm



Height including the electrical part

85*mm

Notes on measures

General notes

PROFILO

4191I-35-L

Recessed Profile / CRISTALY
Surface finish : CRISTALY
GU10 ø35 MAX 9x5W / 240V

Model

Code	4191I
Product family	PROFILO
Type	Recessed Profile

Material/Surface finish

Code	004
Material	CRISTALY
Surface finish	CRISTALY

Electrical part

Code	35
Type	GU10 ø35
Power	MAX 9x5W
Tension	240V
Light Output	-----
Colour Temperature	-----
CRI	-----
Light Output of the lamp	
Dimmable	NO
Power Supply	Tension
Connection	2 Silicon cables
Cover	

General Data

Protection Index	IP20
Isolation Class	II
Weight [Kg]	2,9
Country of production	MADE IN ITALY
Mounting instruction	

Installation

Multisize system	SI
Position	Wall/Ceiling lighting

Packaging

Type	White american Box
Measures AxBxH	760x240x210mm
Gross Weight [Kg]	3,6852
Master carton	NO
Quantity of articles	
Measures AxBxH	

Technical Data Sheet

41911-35-L

9010
novantadieci®

Fotometric Data

<i>Electrical part</i>		<i>Illuminance</i>
<i>Power</i>		
<i>Light Output</i>	lm	
<i>Colour Temperature</i>		
<i>CRI</i>		
<i>Lamp Light Output</i>	%	
<i>Light Output of the lamp</i>		
<i>Beam Angle</i>		
<i>Beam Inclination</i>		

Accessories

Other Accessories



Code L007
Description 20-240V
Notes

Code 4191T-00
Description End Cap
Notes