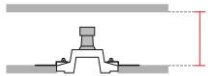
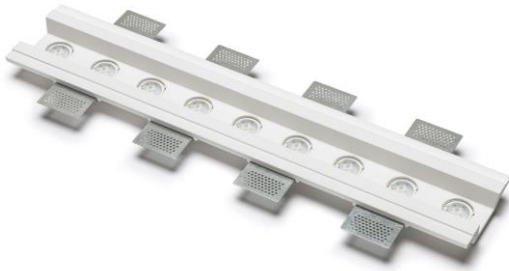


Technical Data Sheet

Last data update

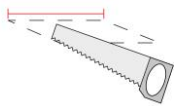
1/17/2017

9010
novantadieci®



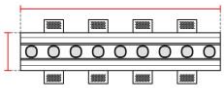
Req. space behind the plasterboard

90mm



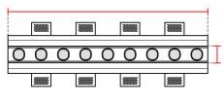
hole on the plasterboard

120x625mm



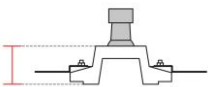
External measures

115x620mm



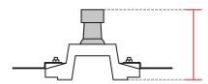
Measures of the light output

50x620mm



Height without electrical part

45mm



Height including the electrical part

85*mm

Notes on measures

General notes

PROFILO

4191I-35

Recessed Profile / CRISTALY
Surface finish : CRISTALY
GU10 ø35 MAX 9x5W / 240V

Model

Code 4191I
Product family PROFILO
Type Recessed Profile

Material/Surface finish

Code 004
Material CRISTALY
Surface finish CRISTALY

Electrical part

Code 35
Type GU10 ø35
Power MAX 9x5W
Tension 240V
Light Output -----
Colour Temperature -----
CRI -----

Light Output of the lamp
Dimmable NO

Power Supply Tension
Connection 2 Silicon cables
Cover

General Data

Protection Index IP20
Isolation Class II
Weight [Kg] 2,9
Country of production MADE IN ITALY
Mounting instruction 025.584_9010

Installation

Multisize system SI
Position Wall/Ceiling lighting

Packaging

Type White american Box
Measures AxBxH 760x240x210mm
Gross Weight [Kg] 3,6852

Master carton NO
Quantity of articles
Measures AxBxH

Technical Data Sheet

41911-35

9010
novantadieci®

Fotometric Data

<i>Electrical part</i>		<i>Illuminance</i>
<i>Power</i>		
<i>Light Output</i>	lm	
<i>Colour Temperature</i>		
<i>CRI</i>		
<i>Lamp Light Output</i>	%	
<i>Light Output of the lamp</i>		
<i>Beam Angle</i>		
<i>Beam Inclination</i>		

Accessories

Other Accessories



Code L007
Description 20-240V
Notes

Code 4191T-00
Description End Cap
Notes