

NEMO

K-Hole 2

Gabi Peretto

K-Hole System is aimed at satisfying the needs of lighting design planning particularly for retail spaces. The family is composed of two typologies: semi-recessed and ceiling/wall with QR111 LED or halogen sources. The semi-recessed version can be installed in all plasterboard ceiling. In the wall/ceiling version, the power supply is integrated. Products realized in matt white powder coated aluminium, with chromed supporting elements.



NEMO

K-Hole 2

Gabi Peretto

LED/ HALO

Lamping

Source	G53, QR111
Total power	2 x 25W LED/ 2 x 50 HALO
Emission	Orientable
Switching	dimnable TRIAC, according to bulb
Tension	220-240V/12V AC
Ip class	A, Q
Dimensions	480x130x170
Materials	Aluminium

Codes

KH2 LWW 41

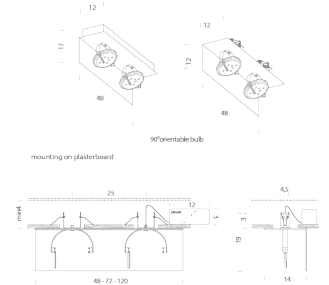
Structure



Diffuseur

Package

LxPxH (base)	18x52x18
Weight (base)	3



NEMO

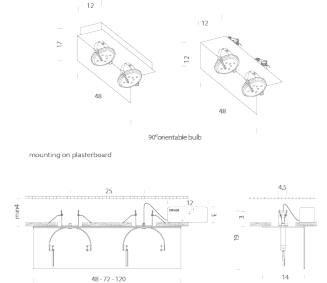
K-Hole 2

Gabi Peretto

LED/HALO RECESSED

Lamping

Source	G53, QR111
Total power	2 x 25W LED/ 2 x 50 HALO
Emission	Orientable
Switching	dimnable TRIAC, according to bulb
Tension	220-240V/12V AC
Ip class	A, Q
Dimensions	480x130x130
Materials	Aluminium



Codes

KH2 LWW 71

Structure



Diffuseur

Package

LxPxH (base)	24x28x61
Weight (base)	2,7