

K-HOLE

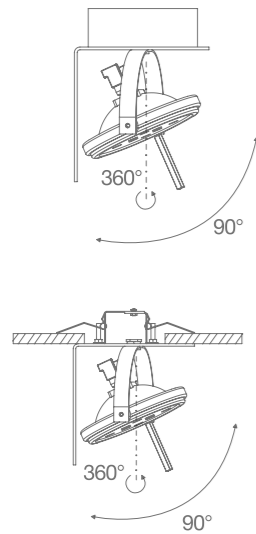
Gabi Peretto

K-Hole System si propone di affrontare e risolvere le necessità di progettazione illuminotecnica, soprattutto per spazi retail. La famiglia si compone di due tipologie: semi-incasso e soffitto/parete, con sorgenti QR111 LED ed alogene. La versione a semi-incasso è installabile nei soffitti con cartongesso. La versione a soffitto/parete contiene gli alloggiamenti per l'elettronica ed i cablaggi in una scocca di alluminio integrata al piano lampade. I prodotti sono interamente realizzati in alluminio verniciato bianco a polvere, con particolari in ottone cromato.

K-Hole System is aimed at satisfying the needs of lighting design planning particularly for retail spaces. The family is composed of two typologies: semi-recessed and ceiling/wall with QR111 LED or halogen sources. The semi-recessed version can be installed in all plasterboard ceiling. In the wall/ceiling version, the power supply is integrated. Products realized in matt white powder coated aluminium, with chromed supporting elements.

Le système K-Hole vise à aborder et résoudre les besoins de conception d'éclairage technique, surtout pour les espaces boutiques. La famille se compose de deux types d'applications: semi-encastré et plafond/applique, avec sources QR111 LED et halogènes. La version semi-encastrée peut être montée sur tous les plafonds en placoplâtre. La version plafond/applique est avec transformateur intégré dans le corps en aluminium. Les produits sont entièrement fabriqués en aluminium verni époxy blanc, avec détails en laiton chromé.

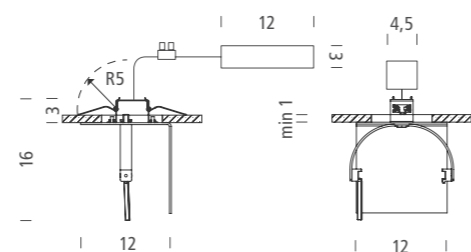
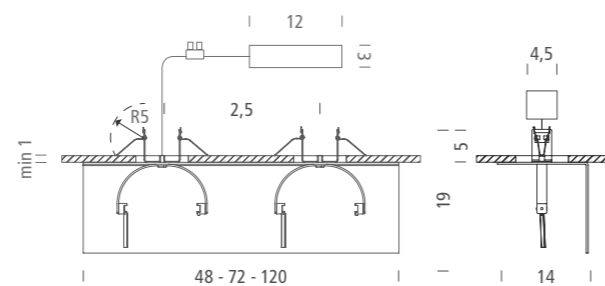
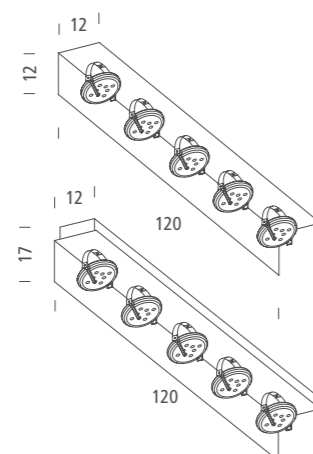
Beleuchtungssystem, ideal für Geschäftsbeleuchtung. Die Familie besteht aus 2 Varianten: Leuchten für den Halbeinbau und Decken/ Wandleuchten, Leuchtmittel QR111 LED und Halogen. Die Halbeinbauversion kann an Gipskartondecken eingebaut werden. Bei der Decken/ Wandversion sind die Elektrik und die Verkabelung integriert. Das Produkt ist komplett aus weiß pulverlackiertem Aluminium, Kleinerelemente aus verchromtem Messing.



5 G53 LED/HALO

source G53, QR111
 emission orientable
 max power 5x25W LED/5x50W HALO
 switching dimmable TRIAC
 tension 220-240V/12V AC
 note 90° orientable bulb,
 recessed hole 5xØ8x4cm

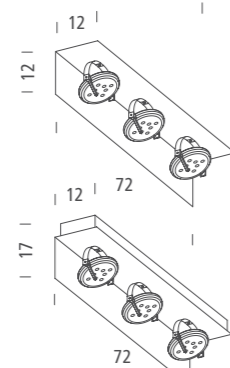
FINISHING	code	structure
recessed	KH5 LWW 41	<input type="radio"/>
semirecessed	KH5 LWW 71	<input type="radio"/>



3 G53 LED/HALO

source G53, QR111
 emission orientable
 max power 3x25W LED/3x50W HALO
 switching dimmable TRIAC
 tension 220-240V/12V AC
 note 90° orientable bulb,
 recessed hole 3xØ8x4cm

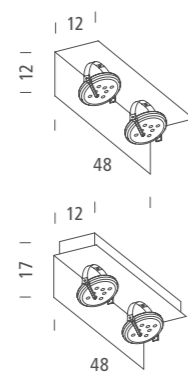
FINISHING	code	structure
recessed	KH3 LWW 41	<input type="radio"/>
semirecessed	KH3 LWW 71	<input type="radio"/>



2 G53 LED/HALO

source G53, QR111
 emission orientable
 max power 2x25W LED/2x50W HALO
 switching dimmable TRIAC
 tension 220-240V/12V AC
 note 90° orientable bulb,
 recessed hole 2xØ8x4cm

FINISHING	code	structure
recessed	KH2 LWW 41	<input type="radio"/>
semirecessed	KH2 LWW 71	<input type="radio"/>



1 G53 LED

source G53, QR111
 emission orientable
 max power 30W
 switching -
 tension 230V/12V AC
 note 90° orientable bulb,
 recessed hole Ø8x4cm

FINISHING	code	structure
recessed	-	<input type="radio"/>
semirecessed	KH1 LWW 71	<input type="radio"/>

1 G53 HALO

source G53, QR111
 emission orientable
 max power 60W
 switching dimmable TRIAC
 tension 230V/12V AC
 note 90° orientable bulb,
 recessed hole Ø8x4cm

FINISHING	code	structure
recessed	-	<input type="radio"/>
semirecessed	KH1 HWW 71	<input type="radio"/>

1 G53 LED/HALO

source G53, QR111
 emission orientable
 max power 30W LED / 60W HALO
 switching dimmable TRIAC
 tension 220-240V/12V AC
 note 90° orientable bulb,
 recessed hole Ø8x4cm

FINISHING	code	structure
recessed	-	<input type="radio"/>
semirecessed	KH1 LWW 41	<input type="radio"/>

