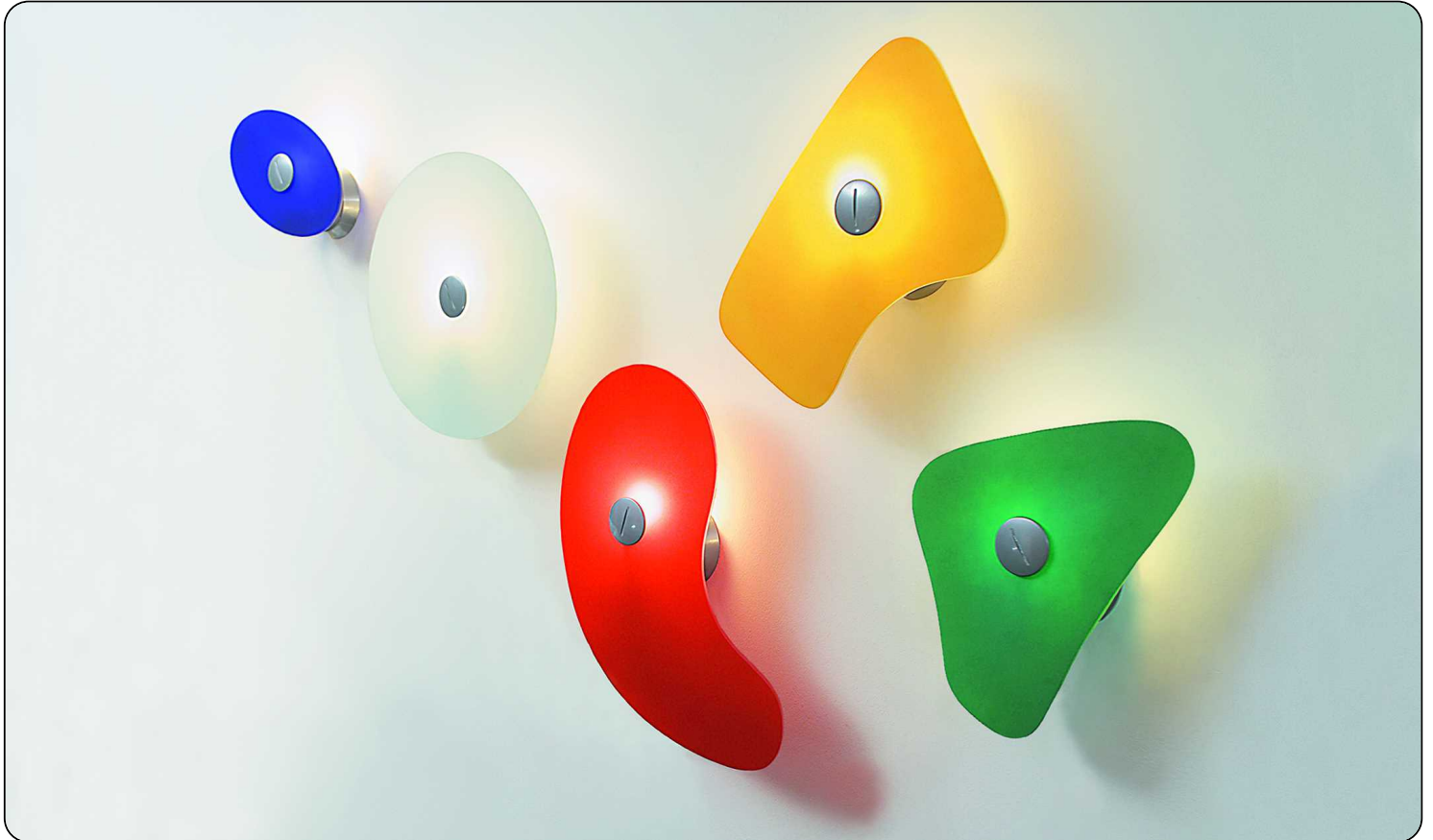


Bit, wall design Ferruccio Laviani 1992

FOSCARINI



The first lamp designed by Ferruccio Laviani along the lines of a sculpture is available as a wall lamp: **Orbital's** five diffusers become the five different versions of Bit - a modular wall lamp. Each slab, made from serigraphed, industrial glass, has its own unique shape for a bold overall graphic effect, both for use on its own and in multi-shape compositions. The white version is highly effective when used tone on tone to enhance the outline of the shapes, which appear carved out on the wall. The colored diffusers evoke a surrealist painting when the lamps are

switched off. When the lamps are switched on these mosaic glass strips create an illusion. The attention to detail extends to the surface treatment of the diffusers, which are satin finished on the outside to give texture to the color and enhance the shapes but glossy on the inside to reflect the light.

Bit, wall technical info

FOSCARINI

Description

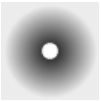
Wall lamp with reflected and diffused light. Wall fitting and wall rose in epoxy powder coated metal. Satin finish white or color painted glass diffuser, available in 5 different shaped and colored shapes, secured to the wall fitting using an epoxy powder coated metal decorative glass-lock.

Materials silkscreen-printed glass and lacquered metal

Colors Bit 1 red or white; Bit 2 blue or white; Bit 3 white; Bit 4 green or white; Bit 5 orange or white

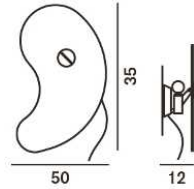


Brightness light
diffused light



Model

Bit 1



Weight
net kg: 1,70
gross kg: 3,30

Packaging
vol. m3: 0,045
n. boxes: 2

Bulbs
Halogen 1x46W E14

LED Retrofit/FLUO 1x12W E14



Cable length



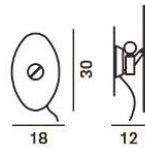
Certifications



Energy Class

A+ A B C

Bit 2



Weight
net kg: 1,20
gross kg: 3,30

Packaging
vol. m3: 0,030
n. boxes: 2

Bulbs
Halogen 1x46W E14

LED Retrofit/FLUO 1x12W E14



Cable length



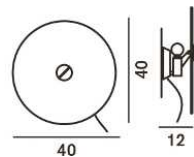
Certifications



Energy Class

A+ A B C

Bit 3



Weight
net kg: 1,80
gross kg: 3,30

Packaging
vol. m3: 0,045
n. boxes: 2

Bulbs
Halogen 1x46W E14

LED Retrofit/FLUO 1x12W E14



Certifications



Energy Class

A+ A B C

[2D/3D drawings](#)
[photometric info](#)
[assembly instructions](#)

download area



Bit, wall technical info

FOSCARINI

Description

Wall lamp with reflected and diffused light. Wall fitting and wall rose in epoxy powder coated metal. Satin finish white or color painted glass diffuser, available in 5 different shaped and colored shapes, secured to the wall fitting using an epoxy powder coated metal decorative glass-lock.

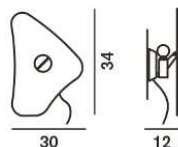
Materials silkscreen-printed glass and lacquered metal

Colors Bit 1 red or white; Bit 2 blue or white; Bit 3 white; Bit 4 green or white; Bit 5 orange or white



Model

Bit 4



Weight

net kg: 1,22
gross kg: 3,30

Packaging

vol. m3: 0,030
n. boxes: 2

Bulbs

Halogen 1x46W E14



LED Retrofit/FLUO 1x12W E14



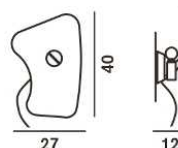
Certifications



Energy Class

A+ A B C

Bit 5



Weight

net kg: 1,35
gross kg: 3,30

Packaging

vol. m3: 0,030
n. boxes: 2

Bulbs

Halogen 1x46W E14



LED Retrofit/FLUO 1x12W E14



Certifications



Energy Class

A+ A B C

Brightness light

diffused light



[2D/3D drawings](#)
[photometric info](#)
[assembly instructions](#)

download area

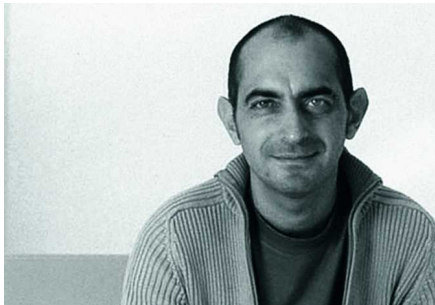


Bit, wall designer+collection

FOSCARINI

Ferruccio Laviani

An architect and designer, he works in the fields of furnishing and furnishing accessories, industrial communication, exhibition, event and show room installation. His contemporary style is hallmarked by a particular sign or color.

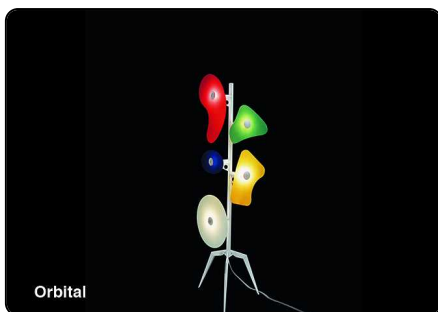


Watch the video Bit



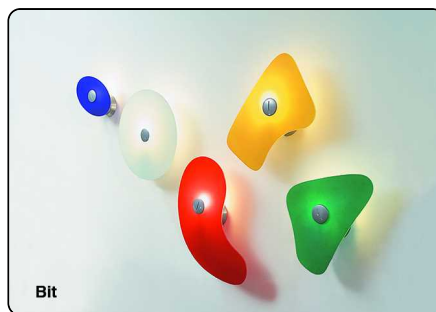
Go to concept site for Bit
www.foscarini.com/bit

Bit Collection



Orbital

floor



Bit

wall