

PLANCTON suspension

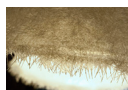
Matteo Ugolini design

year 2013

TECHNICAL SHEET - SE648/1PG

STRUCTURE "A"

material fiberglass
colour grey



CEILING CUP "E"

material metal
colour matt white

ELECTRICAL CABLE "C"

material PVC
colour transparent

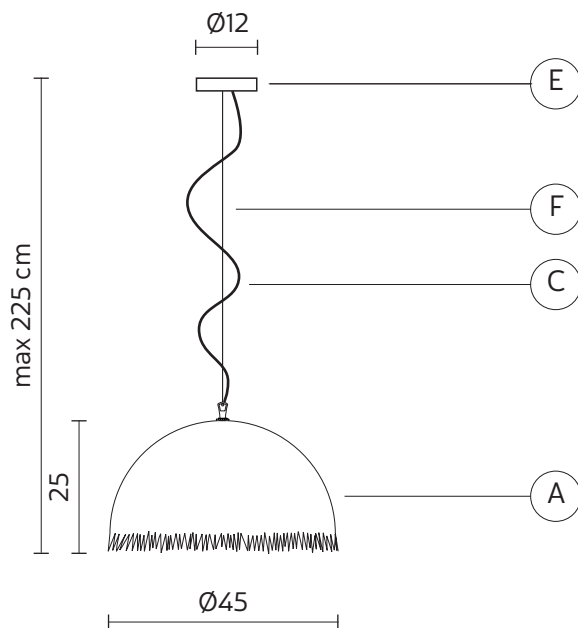


SUSPENSION CABLE "F"

material steel

ELECTRICAL SYSTEM

socket E27
source max 1x70w
energy class from E to A++

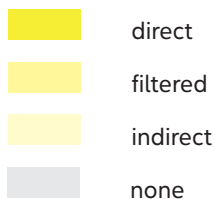
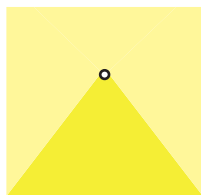


PACKAGING

nr. of collis 1
net weight/kg 1,1
gross weight/kg 3
packaging/cm 50x50x70

EMISSION OF LIGHT

one-directional



CERTIFICATION

IEC 60598-1:2008
EN 60598-1:2008 + A11:2009



IP rate IP20
bulb not provided



COLLECTION

