

# Caboche, floor design Patricia Urquiola + Eliana Gerotto 2005

FOSCARINI



Rich, bright and sophisticated, the Caboche lamp is a mosaic of refractions, a perfect fusion of different personalities in the one form, coming together to create the body and light effect of the lamp. When it is turned on, the light diffuses from inside the spheres like lots of bright crystals, providing 360° lighting of the surrounding environment and guaranteeing both upward and downward lighting. Caboche floor lamp is a small jewel of creativity and technology, available in two sizes and two versions: transparent and yellow gold. The original design of the stem is created by

the three supports that join together to form the round base, recalling the spherical form of the diffuser, and thus guaranteeing a combination of coherence, originality and lightness. Caboche is the perfect protagonist for homes or public areas, uniting visual impact with lightness, decorative value and functionality.

# Caboche, floor technical info

FOSCARINI

## Description

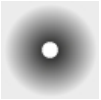
Floor lamp with diffused, direct and indirect light. Satin finish blown glass internal diffuser, satin finish opaline glass lower screen. External diffuser consisting of a crown of polycarbonate arches secured to a chromed metal mount and PMMA spheres. Round die cast aluminium base and epoxy powder coated extruded aluminium rods. The transparent cable is fitted with a dimmer which can be used both to adjust the level of luminous intensity gradually or as the ON/OFF switch.

**Materials** polymethylmethacrylate, blown glass and white lacquered metal

**Colors** transparent, golden yellow

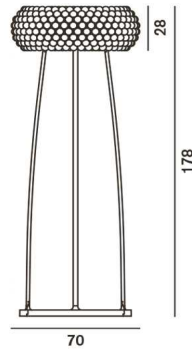


**Brightness light**  
diffused light



## Model

### Caboche large



### Weight

net kg: 23,90  
gross kg: 27,90

### Packaging

vol. m3: 0,314  
n. boxes: 3

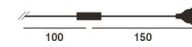
### Bulbs

Halogen 1x230W R7s (118mm)

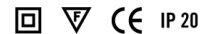


with dimmer included

### Cable length



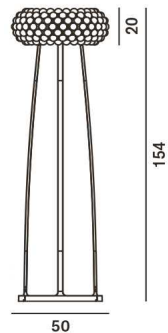
### Certifications



### Energy Class

C

### Caboche medium



### Weight

net kg: 11,80  
gross kg: 15,50

### Packaging

vol. m3: 0,136  
n. boxes: 3

### Bulbs

Halogen 1x160W R7s (118mm)

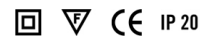


with dimmer included (minimum bulb output 60W)\*

### Cable length



### Certifications



### Energy Class

C

[2D/3D drawings](#)  
[photometric info](#)  
[assembly instructions](#)

download area



# Caboche, floor designer+collection

**FOSCARINI**

## Patricia Urquiola + Eliana Gerotto

Born in Oviedo (Spain), PATRICIA URQUIOLA studied in Madrid and graduated at Politecnico di Milano with Achille Castiglioni as a tutor. From 1990 to 2000 she collaborated with De Padova and Lissoni Associati. In 2001 she started her own design studio, through which she has collaborated with many brands at an international level. ELIANA GEROTTO was born in Venice. She started her career in Milan as a graphic designer. She got her degree in Communication Techniques at Fondazione Davide Campari in Milan. She worked in various fields as graphic, industrial designer, set curator and interior decorator.

Watch the video Caboche



Go to concept site for Caboche  
[www.foscarini.com/caboche](http://www.foscarini.com/caboche)



## Caboche Collection



table



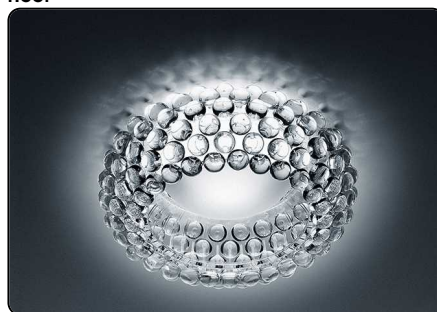
floor



suspension



wall



ceiling