

MADE IN ITALY

Scheda tecnica - Datasheet



LLD



## RIVER MAXI

Incasso per immersione permanente (profondità d'installazione max. 3m) IP68, ideale per l'illuminazione di piscine, bordo piscine, vasche idromassaggio, fontane.

Corpo e ghiera in acciaio inox AISI 316L  
Vetro temperato trasparente

Recessed spotlight for permanent immersion (installation depth max 3m) IP68, ideal for the lighting of swimming pools, pool edges, hydromassage baths and fountains.

Body and trim made of AISI 316L stainless steel  
Tempered glass



Led Luce e Dintorni s.r.l.

Via dei Laghi 76 - 36077 Altavilla Vicentina (VI)  
Tel. 0444 040857, 0444 040858 - Fax 0444 923464

lldlight.it - info@lldlight.it

MADE IN ITALY

Scheda tecnica - Datasheet

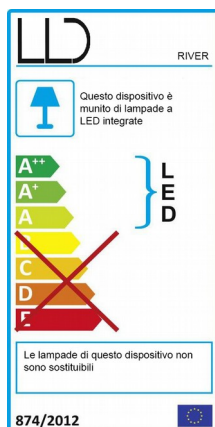


LLD



TECHNICAL DATA

<b>POTENZA ASSORBITA</b> <i>Power Absorption</i>	4-6W
<b>ALIMENTAZIONE</b> <i>Supply Voltage</i>	CC
<b>COLLEGAMENTO</b> <i>Connection</i>	CC: Collegamento in serie – series connection
<b>DURATA MEDIA LED</b> <i>Average LED life</i>	50.000h
<b>COLORI LED DISPONIBILI</b> <i>LED colours available</i>	3000K, 4000K RGB su richiesta – on request
<b>CRI</b>	80
<b>FASCI DISPONIBILI</b> <i>Available Lens</i>	8°, 30° 30° versione RGB – RGB version
<b>FLUSSO LUMINOSO</b> <i>Luminous Flux</i>	560lm - 810lm (3000K) 570lm - 820lm (4000K)
<b>INSTALLAZIONE</b> <i>Installation</i>	Con cassaforma non inclusa With housing box not included
<b>TEMPERATURA DI ESERCIZIO</b> <i>Operating Temperature</i>	-10+45°C
<b>CALPESTABILE</b> <i>Walk Over</i>	Si, 500Kg Yes, 500Kg
<b>CARRABILE</b> <i>Drive Over</i>	No
<b>GRADO DI PROTEZIONE IP</b> <i>IP rating</i>	IP68
<b>CLASSE DI CONSUMO ENERGETICO</b> <i>Energy Efficiency Class</i>	A/A+/A++
<b>CLASSE DI ISOLAMENTO</b> <i>Insulation Class</i>	Classe 3 Class 3
<b>CABLAGGIO</b> <i>Wired</i>	Fornito con 8m di cavo neoprene 2x0,75mm <sup>2</sup> (versione monocolor), o 6x0,5mm <sup>2</sup> (versione RGB) Provided with 8m of 2x0,75mm <sup>2</sup> outdoor cable( one-color version) or 6x0,5mm <sup>2</sup> (RGB version)
<b>PROTEZIONI</b> <i>Protections</i>	WP system (solo per versione monocolor) WP system (only for one color version)



MADE IN ITALY

Scheda tecnica - Datasheet



LLD



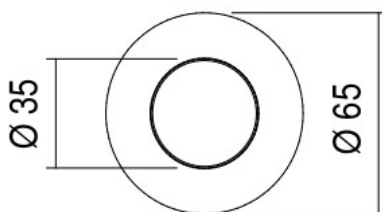
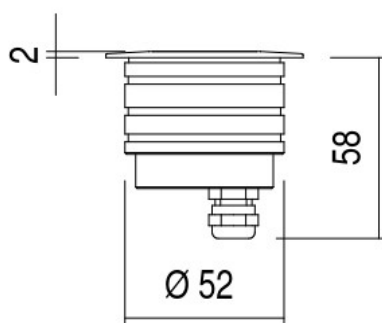
IP68



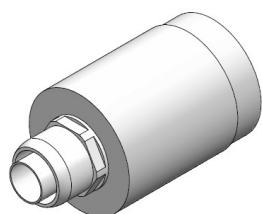
0,75Kg



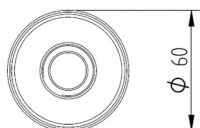
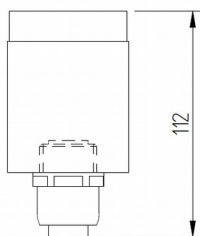
### DIMENSIONI – Dimensions



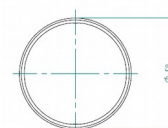
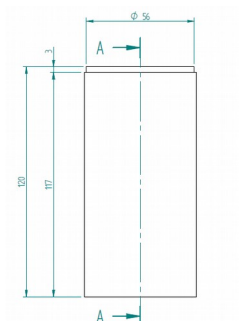
### ACCESSORI – Accessories



CA853



CAW53



Led Luce e Dintorni s.r.l.

Via dei Laghi 76 – 36077 Altavilla Vicentina (VI)  
Tel. 0444 040857, 0444 040858 – Fax 0444 923464

lldlight.it – info@lldlight.it

MADE IN ITALY

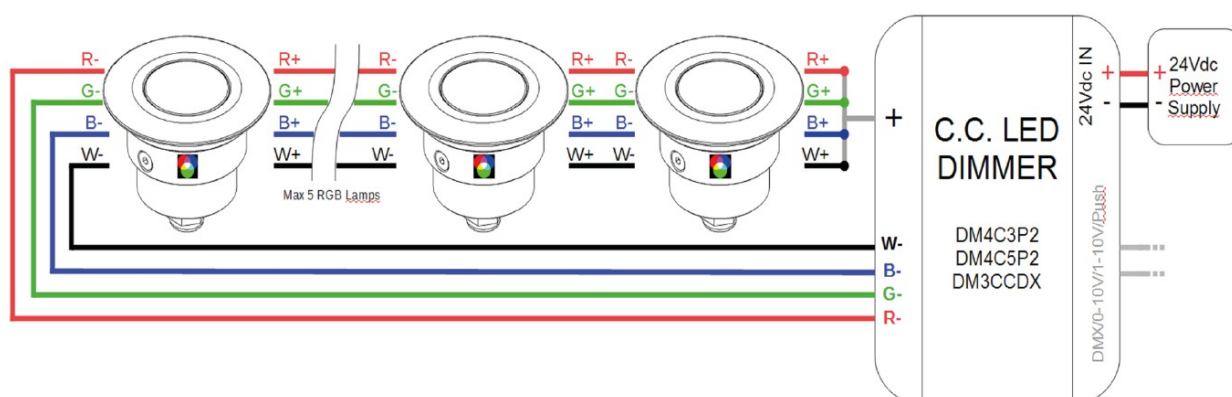
Scheda tecnica - Datasheet



LLD



## SISTEMA DI GESTIONE RGB – RGB system control



### DM4C3P2

Dimmer LED a 4 canali in corrente costante (350mA) per lampade RGB, RGB+W e Bianco Dinamico.

Controllo tramite 2 pulsanti Normalmente Aperti (NA).

*LED dimmer with 4 constant current channels (350mA) for RGB, RGB+W and Tunable White lamps.*

*Control through 2 Normally Open (NO) push buttons.*

Uscita/Output: C.C. 4 canali 350mA / C.C. 4 channels 350mA [max. 30W]

Ingresso/Input: 24Vdc

Comando/Command: 2 Pulsanti NA/ 2 Push buttons NO

Funzioni/Functions: Pulsante 1/Button 1 → On - Off; up ▲ - down ▼

Pulsante 2/Button 2 → Rotazione colore/Color rotation

Dimensioni/Dimensions: 84 x 54 x 26 mm

### DM4C5P2

Dimmer LED a 4 canali in corrente costante (500mA) per lampade RGB, RGB+W e Bianco Dinamico.

Controllo tramite 2 pulsanti Normalmente Aperti (NA).

*LED dimmer with 4 constant current channels (500mA) for RGB, RGB+W and Tunable White lamps.*

*Control through 2 Normally Open (NO) push buttons.*

Uscita/Output: C.C. 4 canali 500mA / C.C. 4 channels 500mA [max. 40W]

Ingresso/Input: 24Vdc

Comando/Command: 2 Pulsanti NA / 2 Push buttons NO

Funzioni/Functions: Pulsante 1/Button 1 → On - Off; up ▲ - down ▼

Pulsante 2/Button 2 → Rotazione colore/Color rotation

Dimensioni/Dimensions: 84 x 54 x 26 mm



Led Luce e Dintorni s.r.l.

Via dei Laghi 76 – 36077 Altavilla Vicentina (VI)  
Tel. 0444 040857, 0444 040858 – Fax 0444 923464

lldlight.it – info@lldlight.it

MADE IN ITALY

Scheda tecnica - Datasheet



### DM3CCDX

Dimmer LED a 3 canali in corrente costante (350mA/500mA) per lampade RGB e Bianco Dinamico.

Controllo tramite bus DMX, segnale 0-10V, pulsante Normalmente Aperto (NA), potenziometro 10k o interruttore.

*LED dimmer with 3 constant current channels (350mA/500mA) for RGB and Tunable White lamps. Control through DMX bus, 0-10V/ signal, Normally Open (NO) push button, 10k potentiometer or switch.*

Uscita/Output: C.C. 3 canali 350mA-500mA / C.C. 3 channels 350mA-500mA [max. 19W@350mA; 27W@500mA ]

Ingresso/Input: 24Vdc

Comando/Command: DMX512-RDM; 0-10V; Pulsante NA/Push button NO; Pot. 10k; interruttore/switch.

Funzioni/Functions: Controllo avanzato di scenari e effetti luminosi; funzionamento Master/Slave. Advanced control of scenes and lighting effects; Master/Slave operation.

Richiedere il manuale per maggiori dettagli.

Request the manual for more details.

*Dimensioni/Dimensions: 72 x 92 x 62 mm - DIN RAIL 4 mod.*



Led Luce e Dintorni s.r.l.

Via dei Laghi 76 – 36077 Altavilla Vicentina (VI)  
Tel. 0444 040857, 0444 040858 – Fax 0444 923464

lldlight.it – info@lldlight.it