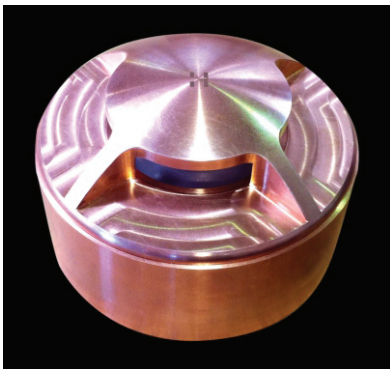
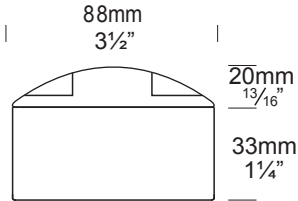


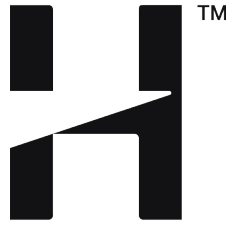
# Path Lite Surface Mount

## PURE LED

Cat. No. PLSM(1-4)/L



Path Lite Surface Mount 3 facet



PURE LED  
Pure Performance

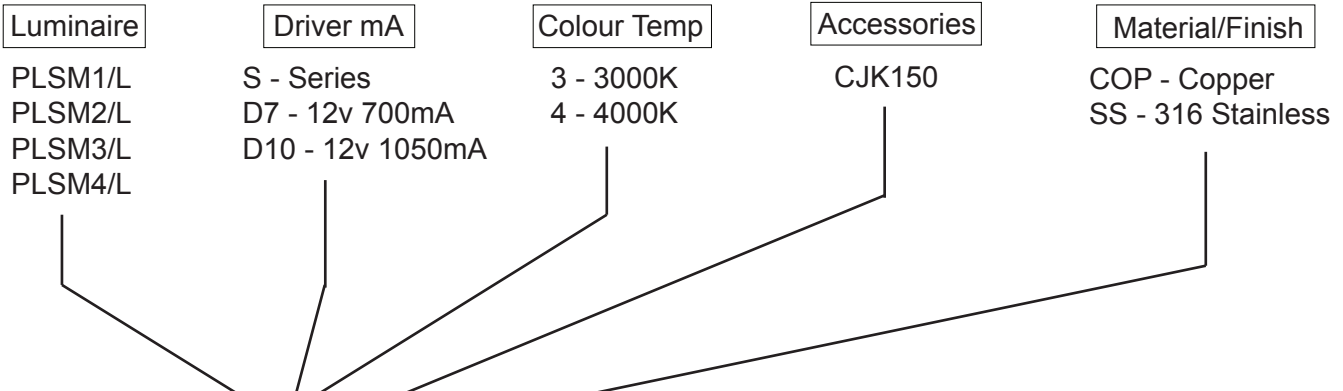
The Path Lite Surface Mount is ideal for lighting flat areas where a recessed fitting is not suitable. It is especially suited to decks, paved courtyards, and edge lighting paths. This LED coupled with a frosted Borosilica dome glass lens produces little-to-no glare through 1, 2, 3 or 4 facets. The frosted Borosilica dome glass lens has been developed to prevent dirt, mud, grass clippings or water from entering the optics area, keeping with its IP66 rating. In addition, the glass lens retains the sealing gasket.

The Hunza PURE LED system uses Cree XTE chips for maximum performance and long life. Power supply options include a choice of integral 12 volt or an external remote (series connection) driver. The PURE LED system incorporates HUNZA's Plug-and-Play system for easy replacement of either the LED engine or integral driver in the field. A choice of a Warm or Cool White colour temperatures is available.

\*At 700mA this fitting is the equivalent of a 20w halogen fitting.

\*At 1000mA this fitting is the equivalent of a 35w halogen fitting.

### Ordering Information



Ordering Example: PL1/L S 3 CJK150 SS

**HUNZA**™ PURE OUTDOOR LIGHTING

HUNZA FACTORY  
130 Felton Mathew Ave  
Saint Johns  
Auckland 1072  
New Zealand

Ph: 64-9-528 9471  
Fax: 64-9-528 9361  
hunza@hunza.co.nz  
www.hunza.co.nz

INTERNATIONAL CONTACTS:  
www.hunza.co.nz/contacts.php

Specifications may change without notice.  
Manufactured in New Zealand.  
© 2014 Hunza Holdings Ltd.

## Luminaire Construction

**CNC machined from one of the following metals:**

### Copper

Body: 88mm (3½") x 9mm (13/32") copper tube.

Flange: 88mm (3½") copper rod.

### 316 Stainless Steel

Body: 88mm (3½") x 9mm (13/32") stainless steel tube.

Flange: 88mm (3½") stainless steel rod.

### Luminaire Weight

Cop 1.30kg (2lb 12oz)

SS 1.00kg (2lb 2oz)

## Luminaire Features

### Lens:

3mm (1/8") thick frosted Borosilica dome glass.  
Lifetime Warranty.

### Gaskets:

Silicone, iron impregnated 220°c (428°f).

### Accessories:

Cable Joint Kit (Cat. CJK150)

### Mounting

The luminaire is secured to the ground by three mounting screws

## Technical Information

### Standards

AS/NZS 61046

IP56/IP66 UL 1838

### LED

Cree XTE Plug-and-Play, field replaceable LED board.

**Lumen Output:** 70 @ 350mA  
120 @ 700mA

**Lumens Per watt:** 70 @ 1 watt  
60 @ 2 watts

**CRI Warm White (3000k):** 85+

**Colour Temp:** 3,000 or 4,000K

### Power Supply

#### External (Series) Driver

Constant current driver

Output: 3vdc at 700mA maximum

#### Integral 12 Volt Driver

Buckbullet Driver:

Input: 12vac 3watt at 700mA

Output: 3vdc nominal, 350mA or 700mA

#### Transformer

Hunza wall Mount Transformer for use with integral 12 volt driver

