

ESPECIFICACIONES TÉCNICAS / ACABADOS  
TECHNICAL DATA / FINISHED

**PERCEVAL-LED / 6338**

Flemming Bjorn

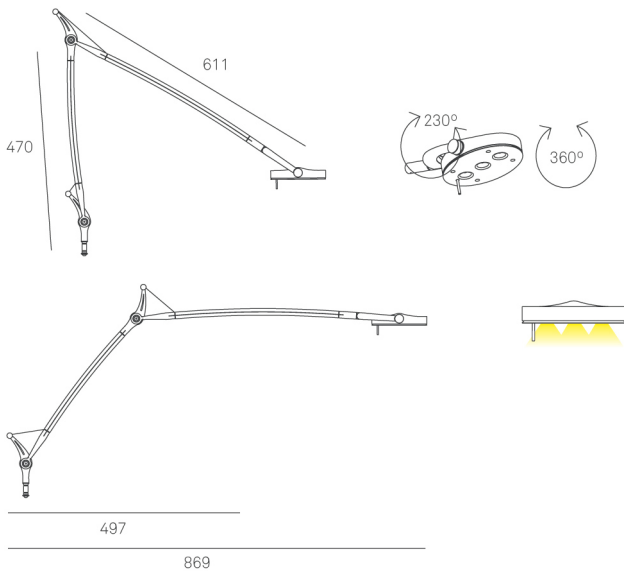
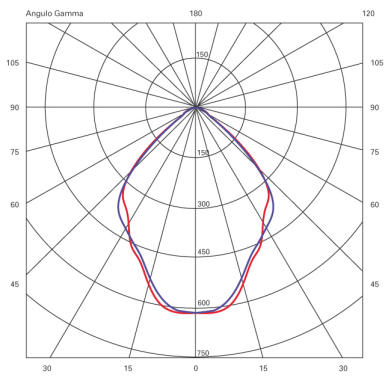
CR

Ø 460

H 470

S 611

3 x Led 4 W. | 240 lumens x3 | 3000 K | 80 Ra | Dim. | EEI: A+



DESCRIPCIÓN  
DESCRIPTION



COMENTARIOS / COMMENTS