



Materiale
Material

Corpo in alluminio anticorrosivo
Anticorrosive aluminium body

Lente in PMMA
PMMA lens

Pot. Assorbita
Abs. Power

1 x 12W

Collegamento
Connection

C.C. - Serie | Series

Cablaggio
Wiring

Fornito con 25 cm di cavo
Provided with 25 cm cable

Installazione
Installation

A incasso su cartongesso o legno tramite molle (incluse)
Recessed on plasterboard or wood with springs (included)

Alimentatore
Power supply

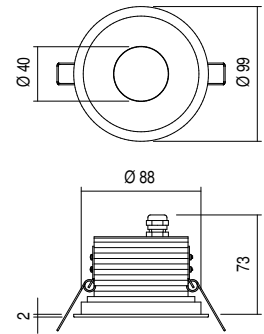
12W - 1000mA (Non incluso | Not included)

Finitura
Finishing

- .01 Alluminio anodizzato** | Anodized aluminium
- .02 Bianco opaco** | Matt white RAL9003
- .08 Nero opaco** | Matt black RAL9005

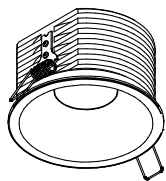
Disponibile su richiesta
Also available

- Dimmerabile** | Dimmable
- Finiture speciali** | Special finishings p.16 - 17
- Lunghezza cavo su misura** | Customized cable length p.511


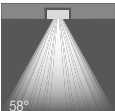


Incasso **IP65**, per installazioni a controsoffitto da interno o esterno, ideale per l'illuminazione di portici, terrazze, ingressi.
Recessed **IP65** spotlight, for indoor and outdoor false ceiling applications, ideal for the lighting of colonnades, balconies, entrances.

ELIKE



IP65 CE F III 0,68 kg 90 mm

	SUPPLY	W	LM	OPTICS	LED COLOR	CODE	FINISHING
	C.C.	12	1320	28°	2700 K	ELI13122	.01 .02 .08
	C.C.	12	1400	28°	3000 K	ELI13132	.01 .02 .08
	C.C.	12	1500	28°	4000 K	ELI13142	.01 .02 .08
	C.C.	12	1320	58°	2700 K	ELI13123	.01 .02 .08
	C.C.	12	1400	58°	3000 K	ELI13133	.01 .02 .08
	C.C.	12	1500	58°	4000 K	ELI13143	.01 .02 .08

ALIMENTATORI OBBLIGATORI | POWER SUPPLIES REQUIRED:

1000mA (12W) IP20

DI1K020 [20W] (1 Fixture)

1A (12W) IP65 - IP67

DE1K014 [14W] (1 Fixture)

Composizione Composition

ELI13122.02-Dx
Dimmable power supply

-D1 -D2 -D3 -D4 Sistema di controllo
Control System

Push - DALI 1-10V Alimentatori dimmerabili p.516
Dimmable power supplies