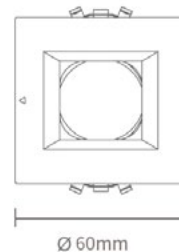
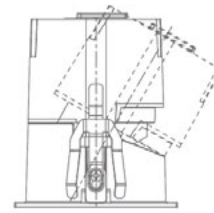


**VIGO MINI SQUARE LED**  
RECESSED ADJUSTABLE DOWNLIGHT  
DLD/9021113IL

**DLD**  
**CONTRACT**



**Dimensions**  
Ø60mm, H.75mm

**Tilt**  
30°

**Cutout**  
Ø55mm

- IP20
- 7W CREE LED COB (chip on board)
- Beam angle: 15° | 25° | 36° | 54°
- Ø55mm round cutout
- 30° adjustable tilt
- 35° glare cut
- 0.22kg weight
- Driver included - non-dim | 1-10V | TRIAC | DALI



**VIGO MINI SQUARE LED**  
RECESSED ADJUSTABLE DOWNLIGHT  
DLD/9021113IL



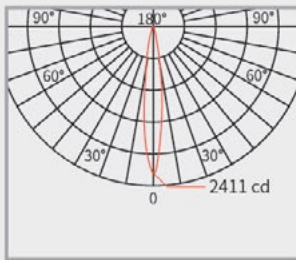
**OVERVIEW**

Power	Beam	Flux	CCT	Non-dim	1-10V dim	TRIAC dim	DALI dim
7W	15°	288lm	2700K	Y	Y	Y	Y
7W	15°	317lm	3000K	Y	Y	Y	Y
7W	15°	361lm	4000K	Y	Y	Y	Y
7W	26°	323lm	2700K	Y	Y	Y	Y
7W	26°	350lm	3000K	Y	Y	Y	Y
7W	26°	339lm	4000K	Y	Y	Y	Y
7W	36°	369lm	2700K	Y	Y	Y	Y
7W	36°	393lm	3000K	Y	Y	Y	Y
7W	36°	397lm	4000K	Y	Y	Y	Y
7W	54°	293lm	2700K	Y	Y	Y	Y
7W	54°	322lm	3000K	Y	Y	Y	Y
7W	54°	318lm	4000K	Y	Y	Y	Y

LUMINOUS DISTRIBUTION DIAGRAM - 7W

15°

CRI >90  
 Output V 12V DC  
 Input I 350mA



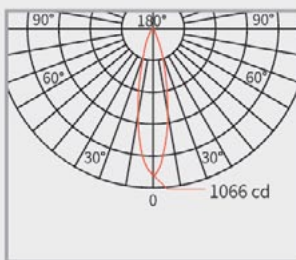
2700K		
h(m)	Ø(m)	LUX(Center/avg)
2	0.54	538/371
3	0.81	239/165
4	1.08	134/93

3000K		
h(m)	Ø(m)	LUX(Center/avg)
2	0.54	603/414
3	0.81	268/184
4	1.08	151/104

4000K		
h(m)	Ø(m)	LUX(Center/avg)
2	0.53	681/464
3	0.80	303/206
4	1.06	170/116

26°

CRI >90  
 Output V 36V DC  
 Input I 120mA



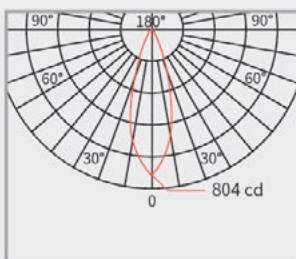
2700K		
h(m)	Ø(m)	LUX(Center/avg)
2	0.92	243/168
3	1.38	108/75
4	1.84	61/42

3000K		
h(m)	Ø(m)	LUX(Center/avg)
2	0.93	267/175
3	1.40	118/78
4	1.87	67/44

4000K		
h(m)	Ø(m)	LUX(Center/avg)
2	0.94	252/166
3	1.41	112/74
4	1.89	63/41

36°

CRI >90  
 Output V 36V DC  
 Input I 120mA



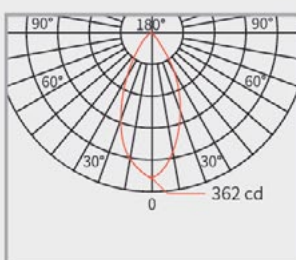
2700K		
h(m)	Ø(m)	LUX(Center/avg)
2	1.27	192/126
3	1.91	85/56
4	2.55	48/32

3000K		
h(m)	Ø(m)	LUX(Center/avg)
2	1.28	201/133
3	1.92	89/59
4	2.56	50/33

4000K		
h(m)	Ø(m)	LUX(Center/avg)
2	1.29	202/134
3	1.93	90/60
4	2.57	50/34

54°

CRI >90  
 Output V 36V DC  
 Input I 120mA



2700K		
h(m)	Ø(m)	LUX(Center/avg)
2	1.93	84/53
3	2.89	37/23
4	3.85	21/13

3000K		
h(m)	Ø(m)	LUX(Center/avg)
2	1.97	91/56
3	2.96	40/25
4	3.94	23/14

4000K		
h(m)	Ø(m)	LUX(Center/avg)
2	1.96	88/54
3	2.93	39/24
4	3.91	22/14

BEZEL / BAFFLE FINISH



White bezel / Black baffle

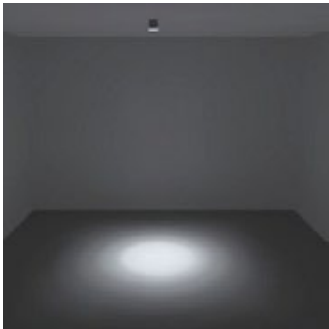


White bezel / White baffle



Black bezel / Black baffle

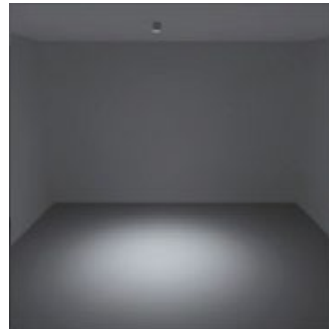
BEAM ANGLE



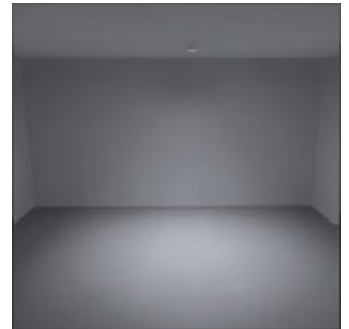
15°



26°



36°



54°

LENS



Tensile lens



Soft lens



Honeycomb louvre

PRODUCT CODE CONSTRUCTION

VIGO MINI SQUARE LED RECESSED ADJUSTABLE DOWNLIGHT

DLD/9021113IL / [X] / [X] / [X] / [X] / [X] / [X] / [X]

CONTROL:

[NON] [1/10V] [TRI] [DAL]

NON-DIM 1-10V DIM TRIAC DIM DALI DIM

LENS:

[TNL] [SFL] [HL]

Tensile Lens Soft Lens Honeycomb louvre

LIGHT COLOUR TEMPERATURE (CCT):

[27K] [30K] [40K]

2700°K 3000°K 4000°K

BEAM ANGLE:

[15D] [26D] [36D] [54D]

15° 26° 36° 54°

WATTAGE:

[7W]

7W

BAFFLE FINISH:

[WH] [BK]

White Black

BEZEL FINISH:

[WH] [BK]

White Black

 01189 889414

 [enquiries@dld-contract.co.uk](mailto:enquiries@dld-contract.co.uk)

 [dld-contract.co.uk](http://dld-contract.co.uk)

DLD Contract Ltd  
Unit 9 Brookside Nurseries  
Church Road  
Swallowfield  
Reading  
Berkshire  
RG7 1TH