

MADE IN ITALY

Scheda tecnica - Datasheet



LLD



IP67



0,25Kg



ALTEA MAXI

Incasso a pavimento/parete/soffitto IP67, ideale per l'illuminazione di gradini, marciapiedi, vialetti, facciate.

Corpo in alluminio anticorrosione anodizzato
Ghiera in alluminio anodizzato o in acciaio inox AISI 316L
Vetro temperato trasparente

Recessed floor/wall spotlight IP67, ideal for the lighting of steps, sidewalks, paths, facades.

Body made of anticorrosion anodized aluminium
Trim made of anodized aluminium or AISI 316L stainless steel
Tempered transparent glass



Led Luce e Dintorni s.r.l.

Via dei Laghi 76 - 36077 Altavilla Vicentina (VI)
Tel. 0444 040857, 0444 040858 - Fax 0444 923464

lldlight.it - info@lldlight.it

MADE IN ITALY

Scheda tecnica - Datasheet

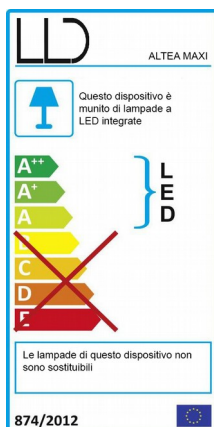


LLD



TECHNICAL DATA

POTENZA ASSORBITA <i>Power Absorption</i>	4-6W
ALIMENTAZIONE <i>Supply Voltage</i>	350-500mA-24VDC 350-500mA (RGB)
COLLEGAMENTO <i>Connection</i>	Collegamento in serie Series Connection
DURATA MEDIA LED <i>Average LED life</i>	50.000h
COLORI LED DISPONIBILI <i>LED colours available</i>	2700K, 3000K, 4000K, RGB
CRI	80
FASCI DISPONIBILI <i>Available Lens</i>	8°, 30° 30° (RGB)
FLUSSO LUMINOSO <i>Luminous Flux</i>	4W: 560lm (3000K), 570lm (4000K) 6W: 810lm (3000K), 820lm (4000K)
INSTALLAZIONE <i>Installation</i>	Cartongesso/legno tramite molle non incluse, a terra con cassaforma non inclusa On false ceiling/wood with springs not included, On ground with housing box not included
TEMPERATURA DI ESERCIZIO <i>Operating Temperature</i>	-10+45°C
CALPESTABILE <i>Walk Over</i>	Si 500Kg Yes 500Kg
CARRABILE <i>Drive Over</i>	No
GRADO DI PROTEZIONE IP <i>IP rating</i>	IP67
CLASSE DI CONSUMO ENERGETICO <i>Energy Efficiency Class</i>	A/A+/A++
CLASSE DI ISOLAMENTO <i>Insulation Class</i>	Classe 3 Class 3
PROTEZIONI <i>Protections</i>	WP system (non disponibile per la versione RGB) WP system (not available for RGB version)



MADE IN ITALY

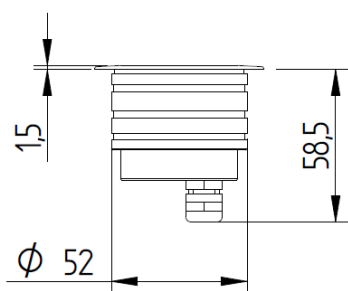
Scheda tecnica - Datasheet



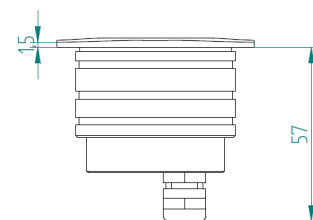
LLD



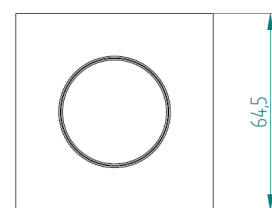
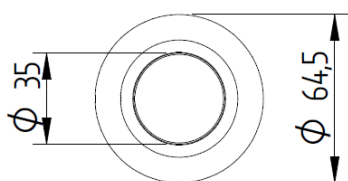
DIMENSIONI – Dimensions



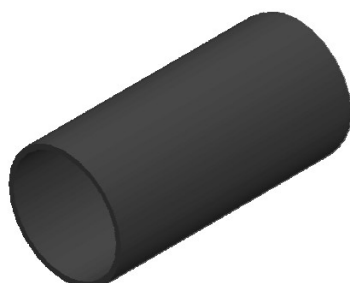
ALTEA MAXI R



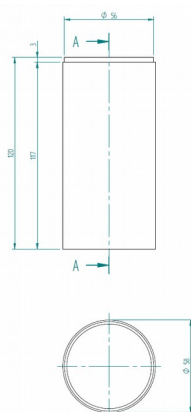
ALTEA MAXI Q



ACCESSORI – Accessories



CAW53



ML053



Led Luce e Dintorni s.r.l.

Via dei Laghi 76 – 36077 Altavilla Vicentina (VI)
Tel. 0444 040857, 0444 040858 – Fax 0444 923464

lldlight.it – info@lldlight.it

MADE IN ITALY

Scheda tecnica - Datasheet

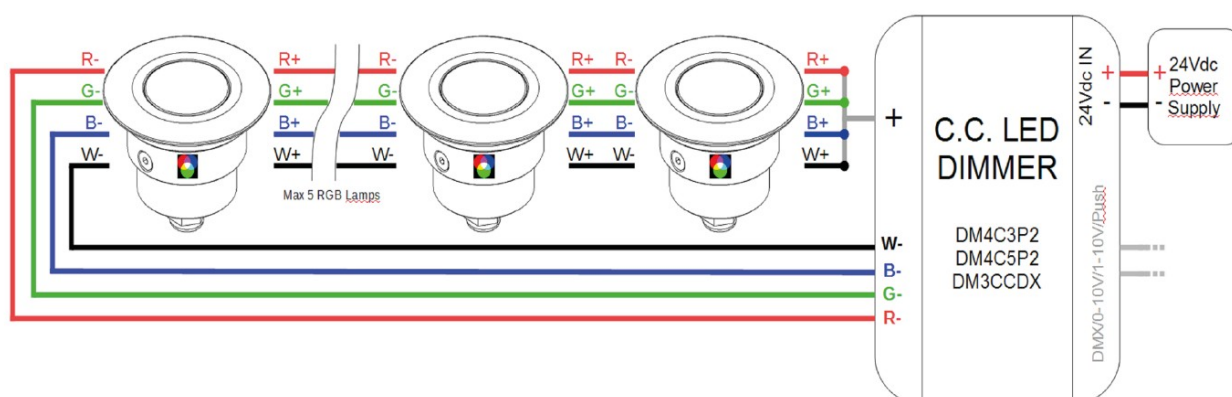


LLD



ACCESSORI – Accessories

Solo per versione RGB – Only for RGB version



DM4C3P2

Dimmer LED a 4 canali in corrente costante (350mA) per lampade RGB, RGB+W e Bianco Dinamico.

Controllo tramite 2 pulsanti Normalmente Aperti (NA).

LED dimmer with 4 constant current channels (350mA) for RGB, RGB+W and Tunable White lamps.

Control through 2 Normally Open (NO) push buttons.

Uscita/Output: C.C. 4 canali 350mA / C.C. 4 channels 350mA [max. 30W]

Ingresso/Input: 24Vdc

Comando/Command: 2 Pulsanti NA/ 2 Push buttons NO

Funzioni/Functions: Pulsante 1/Button 1 → On - Off; up ▲ - down ▼

Pulsante 2/Button 2 → Rotazione colore/Color rotation

Dimensioni/Dimensions: 84 x 54 x 26 mm

DM4C5P2

Dimmer LED a 4 canali in corrente costante (500mA) per lampade RGB, RGB+W e Bianco Dinamico.

Controllo tramite 2 pulsanti Normalmente Aperti (NA).

LED dimmer with 4 constant current channels (500mA) for RGB, RGB+W and Tunable White lamps.

Control through 2 Normally Open (NO) push buttons.

Uscita/Output: C.C. 4 canali 500mA / C.C. 4 channels 500mA [max. 40W]

Ingresso/Input: 24Vdc

Comando/Command: 2 Pulsanti NA / 2 Push buttons NO

Funzioni/Functions: Pulsante 1/Button 1 → On - Off; up ▲ - down ▼

Pulsante 2/Button 2 → Rotazione colore/Color rotation

Dimensioni/Dimensions: 84 x 54 x 26 mm



Led Luce e Dintorni s.r.l.

Via dei Laghi 76 – 36077 Altavilla Vicentina (VI)
Tel. 0444 040857, 0444 040858 – Fax 0444 923464

lldlight.it – info@lldlight.it

MADE IN ITALY

Scheda tecnica - Datasheet



LLD



DM3CCDX

Dimmer LED a 3 canali in corrente costante (350mA/500mA) per lampade RGB e Bianco Dinamico.

Controllo tramite bus DMX, segnale 0-10V, pulsante Normalmente Aperto (NA), potenziometro 10k o interruttore.

LED dimmer with 3 constant current channels (350mA/500mA) for RGB and Tunable White lamps. Control through DMX bus, 0-10V/ signal, Normally Open (NO) push button, 10k potentiometer or switch.

Uscita/Output: C.C. 3 canali 350mA-500mA / C.C. 3 channels 350mA-500mA [max. 19W@350mA; 27W@500mA]

Ingresso/Input: 24Vdc

Comando/Command: DMX512-RDM; 0-10V; Pulsante NA/Push button NO; Pot. 10k; interruttore/switch.

Funzioni/Functions: Controllo avanzato di scenari e effetti luminosi; funzionamento Master/Slave. Advanced control of scenes and lighting effects; Master/Slave operation.

Richiedere il manuale per maggiori dettagli.

Request the manual for more details.

Dimensioni/Dimensions: 72 x 92 x 62 mm - DIN RAIL 4 mod.



Led Luce e Dintorni s.r.l.

Via dei Laghi 76 – 36077 Altavilla Vicentina (VI)
Tel. 0444 040857, 0444 040858 – Fax 0444 923464

lldlight.it – info@lldlight.it