

# LINK

Design by Ramón Esteve.

VIBIA  
LIGHT IS CREATION

## Reference

**5373.**

## Application

Ceiling Lamps

## Installation type

Surface

## Description

Geometry as decor... The Link is a series of preconfigured geometric patterns that can be arranged across the canvas of a ceiling. These configurations have shallow profiles making them ideal for residential and hospitality settings or anywhere with low ceilings. The combinations of different rectangular shapes create surface fixtures of different sizes, with up to five combined cubist forms.

## Diffuser

Methacrylate diffuser

## Finish



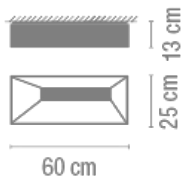
**5373-03.**

Shiny white  
lacquer

**5373-18.**

Shiny graphite  
lacquer

## Sketch



## Electrical characteristics

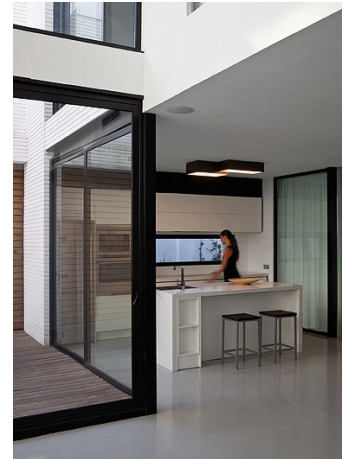
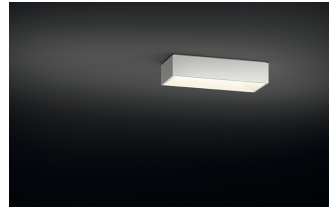
2 x 2G11 230V 24W

AND

2 x 2G11 230V 18W



Total 84.0 W



## Physical characteristics

1 Box / 0.27 x 0.60 x 0.60 m. / Vol. 0.1033 m<sup>3</sup> /  
Gross weight 6.4 kg. / Net weight 5.8 kg.

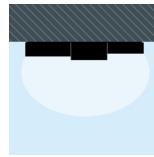
## Installation and assembly

Please, see the installation manual

## Light distribution

### General lighting

Lamp for general lighting that equally distributes the light in all directions.



## Photometric data

Efficiency : 20.46%

Coordinate system : CG

Total flux : 6000.00 lm

Maximum value : 67.98 cd/klm

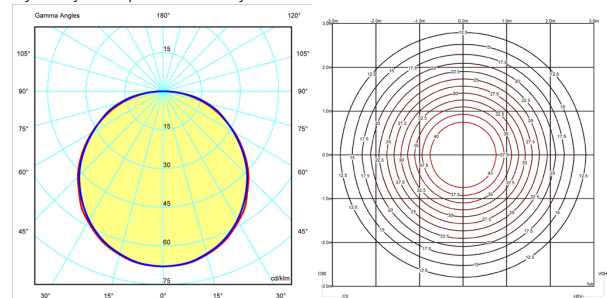
Light position : C=0.00 G=0.00

Isolux : Floor

Light position :

X=0.00m Y=0.00m Z=3.00m

Symmetry on the planes : Double symmetrical



## Certificates

