

SLIM

Design by Jordi Vilardell.

VIBIA
LIGHT IS CREATION

Reference

0915.

Application

Hanging lamps

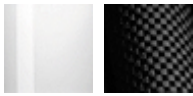
Description

Hanging lamp in four units giving a soft light ideal for high ceilings. Designed by Jordi Vilardell. With patterned glass diffuser and finished in white lacquered fibre or black carbon fibre. LED light source.

Diffuser

Pressed-glass diffuser

Finish



0915-03. White lacquer fiber
0915-04. Black carbon fiber

Sketch



Electrical characteristics

4 x LED2,1W 700mA



Total 9.2 W



Physical characteristics

1 Box / 0.27 x 0.76 x 0.76 m. / Vol. 0.1559 m³ /
Gross weight 6.7 kg. / Net weight 6.0 kg.

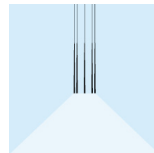
Installation and assembly

Please, see the installation manual

Light distribution

General lighting - opaque shade

Lamp for general lighting with an opaque shade and distributing light upwards and/or downwards mainly.



Photometric data

Efficiency : 48.29%

Coordinate system : C-G

Total flux : 725.00 lm

Maximum value : 362.43 cd/klm

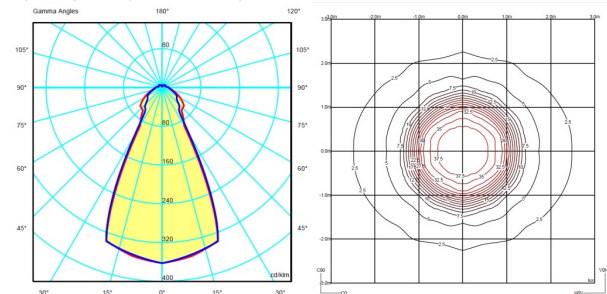
Light position : C=0.00 G=0.00

Symmetry on the planes : Double symmetrical

Isolux : Isolux (suelo)

Light position :

X=0.00m Y=0.00m Z=2.50m



Certificates

